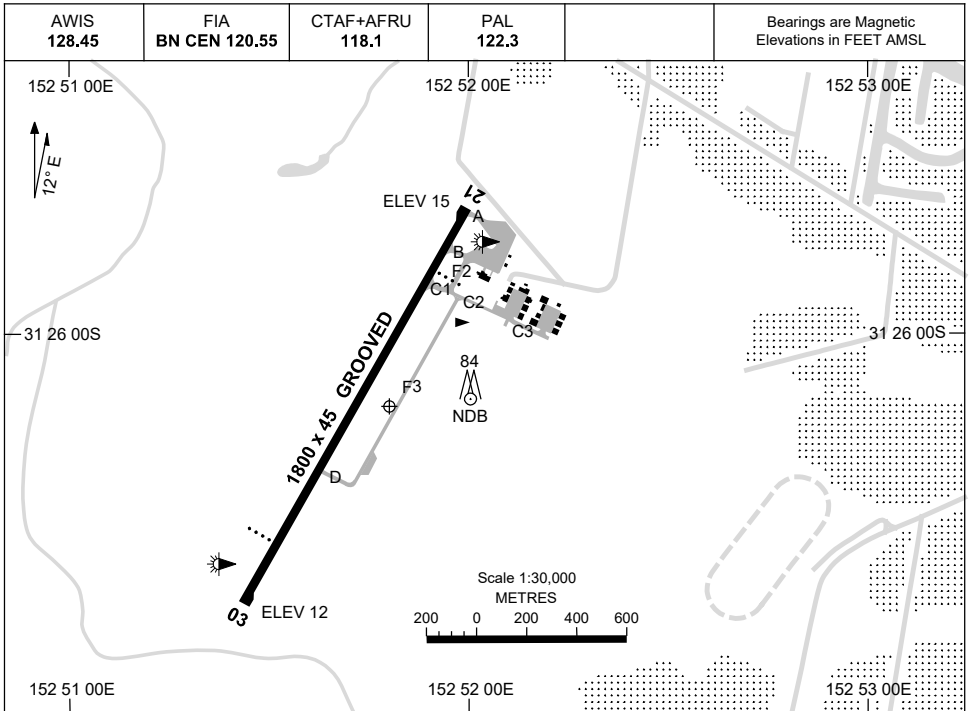


7 SEP 2023

AD ELEV 15
31 26 09S 152 51 48E

AERODROME CHART
PORT MACQUARIE, NSW (YPMQ)



AERODROME LIGHTING	
RWY	TAXIWAY : BLUE EDGE TWY A, B, C1, F2 RL : PAL 122.3 , SDBY (15 SEC)
03 <small>017</small>	PAPI 3.0° 54FT LIRL
<small>197</small> 21	PAPI 3.0° 54FT LIRL

NOTES

1. FIA FREQ 120.55 AVBL IN CIRCUIT AREA.
FOR ON GROUND COM CONTACT BN CEN 126.6

Changes: NEW TWY, RELOCATE UNLIT WI, HELIPAD REMOVED, Editorial.

PMQAD01-176

GNSS ARRIVAL PROCEDURES PORT MACQUARIE, NSW (YPMQ)

8 NOV 2018

AWIS 128.45	FIA BN CEN 120.55	CTAF+AFRU 118.1	PAL 122.3		Bearings are Magnetic Elevations in FEET AMSL
----------------	----------------------	--------------------	--------------	--	--

REFERENCE WAYPOINT PMQ NDB

10 NM MSA 3000

AD ELEV 15

SECTOR A

MISSED APPROACH:

TURN AS APPROPRIATE,
TRACK 145°.
CLIMB TO 2000FT.

NM TO NDB	25	16	15	12	7	5	3	0								
CIRCLING MINIMA	A,B: 930-2.4		C: 1030-4.0		D: N/A											
NM TO NDB	16	14	12	10	9	8	7	6	5	4	3	2.6	2.3			
ALT (3° APCH PATH)	5300	4660	4030	3390	3070	2750	2440	2120	1800	1480	1160	1030	930			

SECTOR B

MISSED APPROACH:

TURN AS APPROPRIATE,
TRACK 045°.
CLIMB TO 2000FT.

NM TO NDB	25	19	15	10	8	6	5	2	0							
CIRCLING MINIMA	A,B: 800-2.4		C: 1030-4.0		D: N/A											
NM TO NDB	14.6	13	11	9	8	7	6	5	4	3	2	1.2	1	0.4		
ALT (3° APCH PATH)	5300	4800	4160	3530	3210	2890	2570	2250	1940	1620	1300	1030	980	800		

SECTOR C

MISSED APPROACH:

TURN AS APPROPRIATE,
TRACK 140°.
CLIMB TO 2000FT.

NM TO NDB	25	19	16	15	8	7	5	4	3	0						
CIRCLING MINIMA	A,B: 790-2.4		C: 1030-4.0		D: N/A											
NM TO NDB	15.2	14	12	10	8	7	6	5	4	3	2	1.8	1.1			
ALT (3° APCH PATH)	5300	4910	4270	3640	3000	2680	2370	2050	1730	1410	1090	1030	790			

Changes: Editorial.

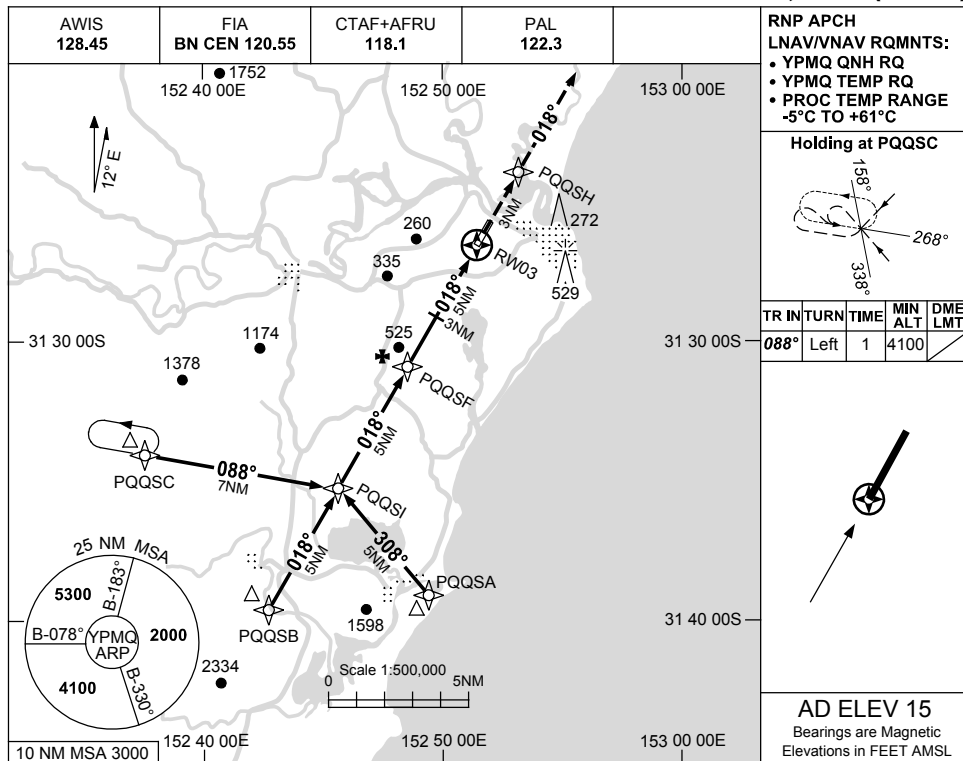
PMQDG01-157

USE QNH

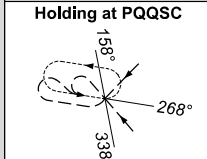
RNP RWY 03

30 NOV 2023

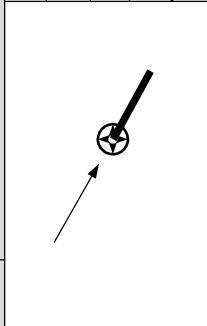
PORT MACQUARIE, NSW (YPMQ)



RNP APCH
LNAV/VNAV RQMNTS:
• YPMQ QNH RQ
• YPMQ TEMP RQ
• PROC TEMP RANGE
-5°C TO +61°C

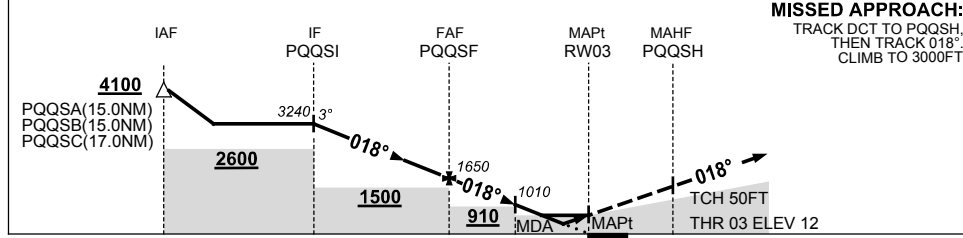


TR	IN	TURN	TIME	MIN ALT	DME LMT
088°	Left	1	4100		



AD ELEV 15
Bearings are Magnetic
Elevations in FEET AMSL

NM TO NEXT WPT	PQQSI	4	3	2	1	PQQSF	4	3	2	1.9	1.3	RW03
ALT (3° APCH PATH)	3240	2920	2600	2290	1970	1650	1330	1010	700	680	480	



MISSED APPROACH:
TRACK DCT TO PQQSH,
THEN TRACK 018°,
CLIMB TO 3000FT

NOTES

CATEGORY	A	B	C	D
LNAV/VNAV		480 (468-2.6)		NOT APPLICABLE
LNAV		680 (665-3.8)		
CIRCLING	850 (835-2.4)		1030 (1015-4.0)	
ALTERNATE	(1335-4.4)		(1515-6.0)	

1. MAX IAS:
INITIAL : 210KT.
CAUTION:
HOLDING PATTERN
IS OVERLAID BY
TAREE RNP RWY 22.

Changes: DELETED R574, NEW LOGO, Editorial.

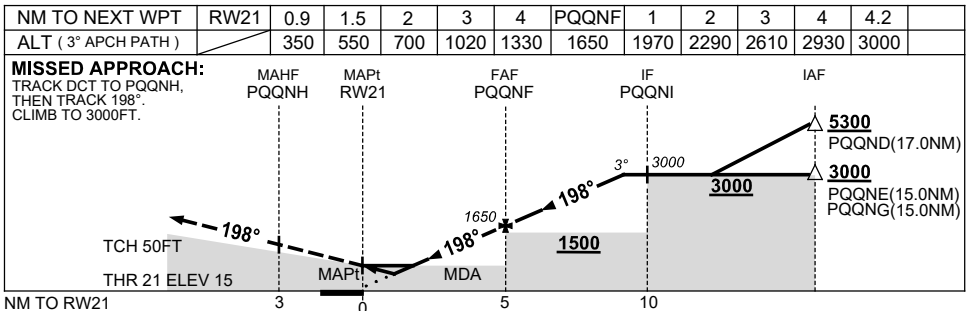
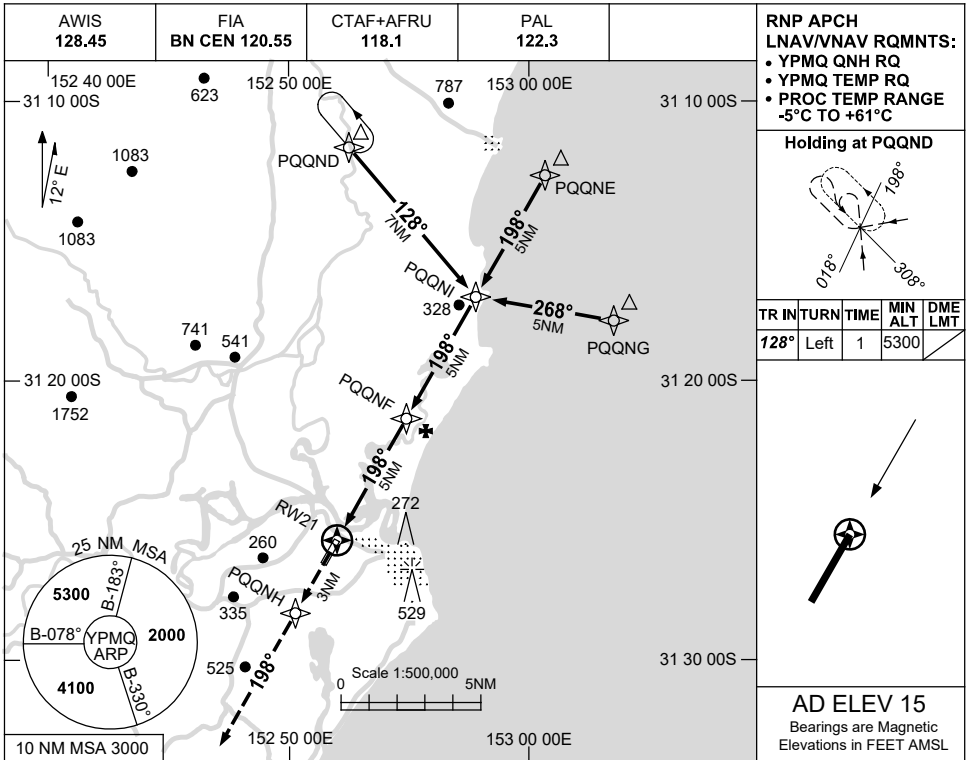
PMQGN01-177

USE QNH

RNP RWY 21

30 NOV 2023

PORT MACQUARIE, NSW (YPMQ)



NOTES

CATEGORY	A	B	C	D
LNAV/VNAV	350 (335-1.9)			NOT APPLICABLE
LNAV	550 (535-3.0)			
CIRCLING	850 (835-2.4)		1030 (1015-4.0)	
ALTERNATE	(1335-4.4)		(1515-6.0)	

1. MAX IAS:
HOLDING: 210KT.
INITIAL : 210KT.
2. HOLDING PATTERN
OVERLAYS KEMPSEY
PROCEDURES.

Changes: DELETED R574, NEW LOGO.

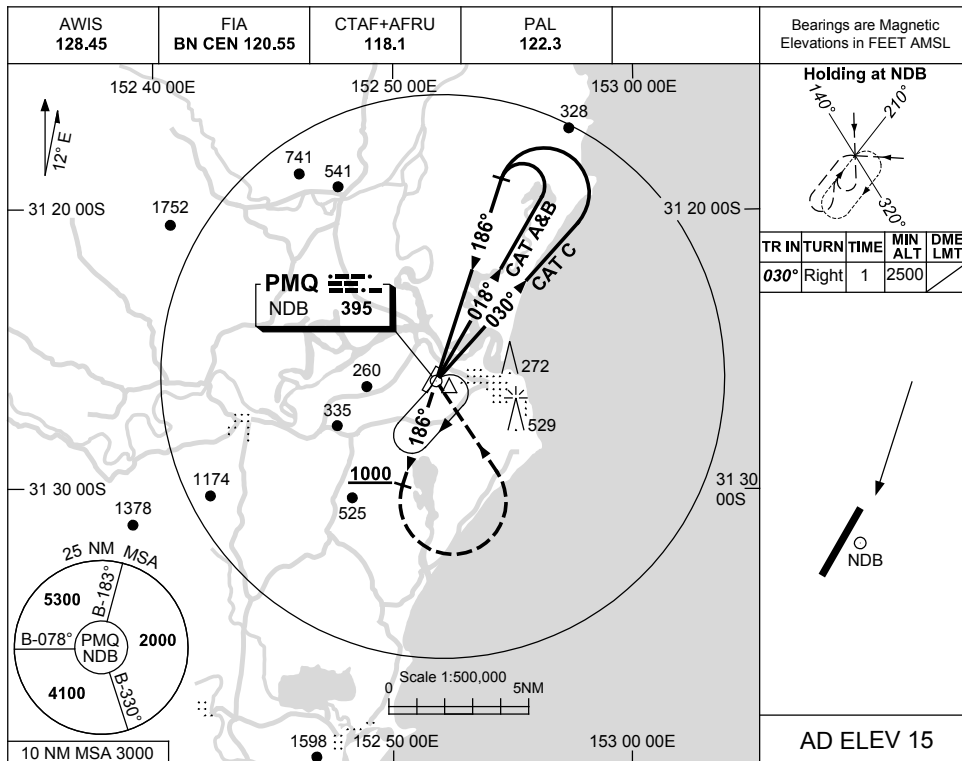
PMQGN02-177

USE QNH

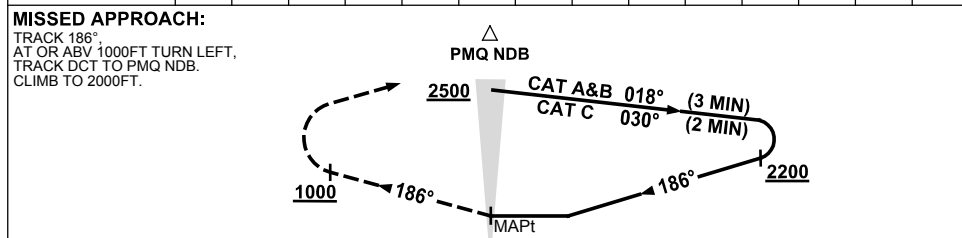
NDB-A

30 NOV 2023

PORT MACQUARIE, NSW (YPMQ)



DME DIST	NOT APPLICABLE			
ALT				



NOTES

CATEGORY	A	B	C	D
CIRCLING	850 (835-2.4)		1030(1015-4.0)	NOT APPLICABLE
ALTERNATE	(1335-4.4)		(1515-6.0)	

1. MAX IAS:
INITIAL : 210KT.

Changes: DELETED R574, Editorial.

PMQNB01-177