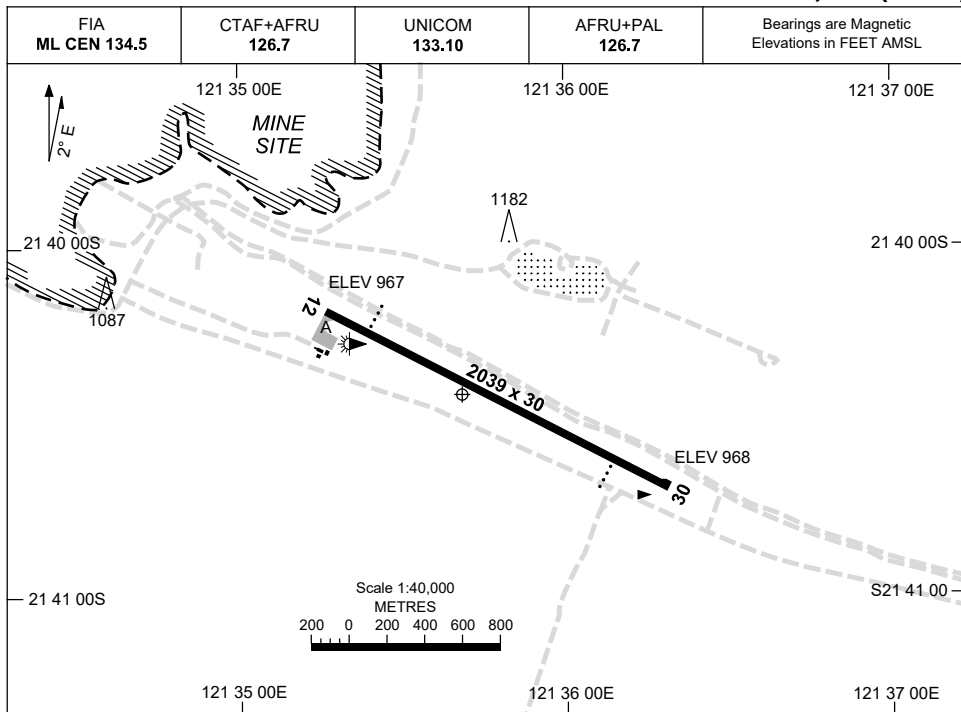


23 MAR 2023

AD ELEV 968
21 40 25S 121 35 41E

AERODROME CHART
NIFTY, WA (YCNF)



	AERODROME LIGHTING
RWY	RL : AFRU+PAL 126.7
12 ¹¹⁶	PAPI 3.0° 48FT PTBL
²⁹⁶ 30	PAPI 3.0° 48FT PTBL

NOTES

1. FIA FREQ 134.5 AVBL IN CIRCUIT AREA.
2. RWY 12/30 PTBL LIGHTING AVBL FOR EMERG USE ONLY. 60 MIN PN RQ.
3. RWY 12/30 PAPI LIGHTING-PAL 30 MIN CYCLE.

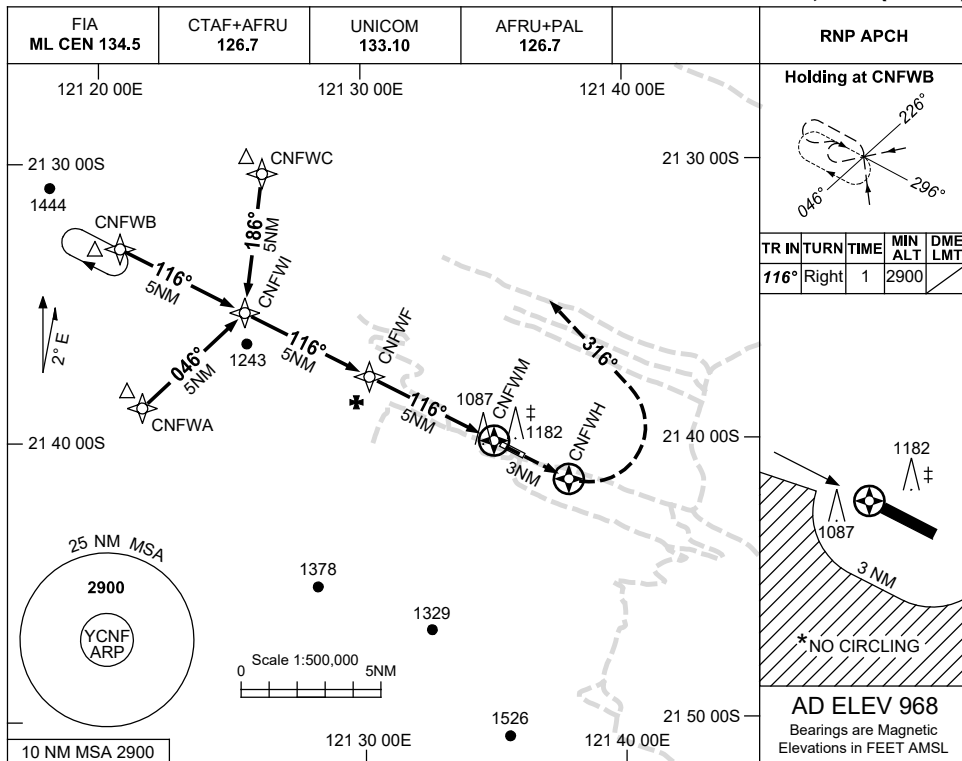
Changes: NOTE 2 DELETED, TWY, BUILDINGS AND ARP AMEND.

CNFAD01-174

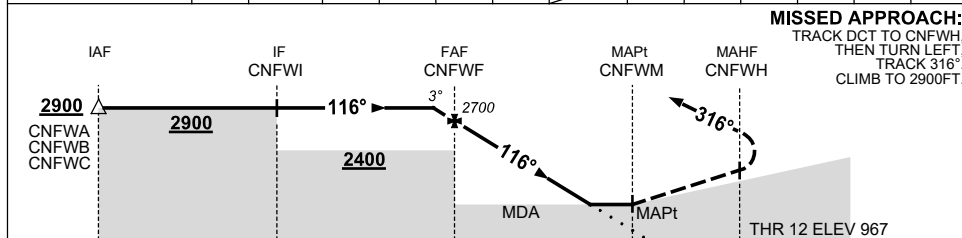
USE QNH

RNP RWY 12
NIFTY, WA (YCNF)

30 NOV 2023



NM TO NEXT WPT	0.6	CNFWF	4	3	2	1.3	CNFWM						
ALT (3° APCH PATH)	2900	2700	2380	2060	1740	1530							



MISSED APPROACH:
TRACK DCT TO CNFWH,
THEN TURN LEFT,
TRACK 316°,
CLIMB TO 2900FT.

NOTES

- MAX IAS:
INITIAL : 210KT
HOLDING: 200KT.
- NO CIRCLING
BEYOND 3NM S
OF RWY 12/30.

‡ CAUTION:
UNMARKED/UNILT
1182FT TWR 017°/
0.4NM FROM ARP.

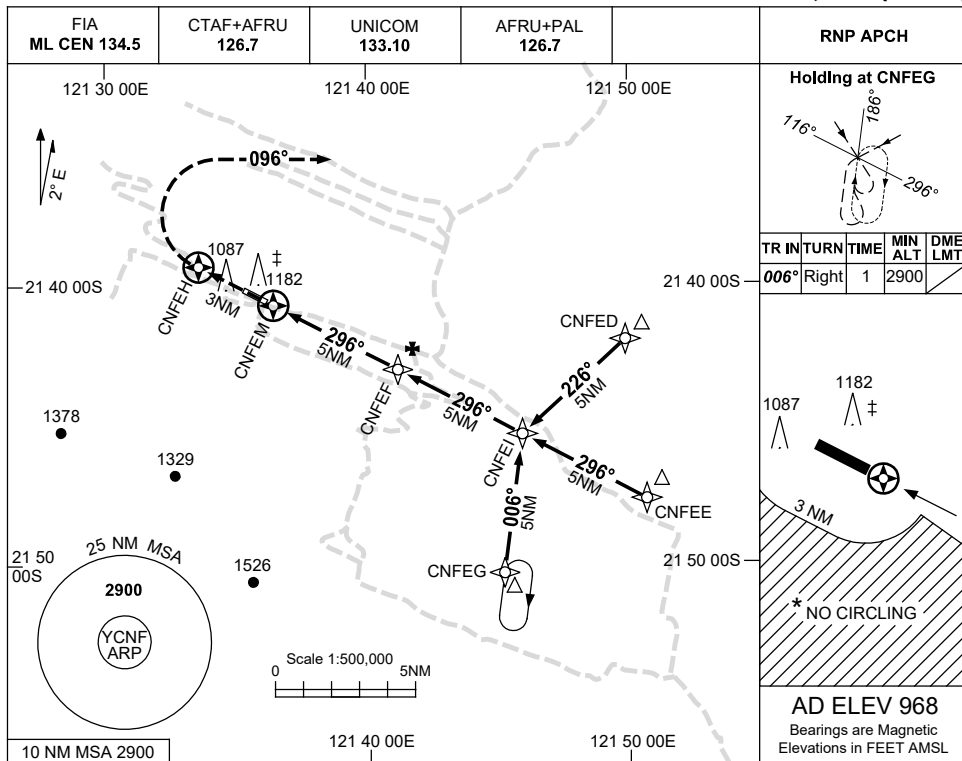
CATEGORY	A	B	C	D
LNAV	1530 (562-3.2)			NOT APPLICABLE
CIRCLING	1580 (612-2.4)	1680 (712-4.0)		
ALTERNATE	(1112-4.4)		(1212-6.0)	

Changes: CHART TITLE, PBN SPECIFICATION BOX, Editorial. CNFGN01-177

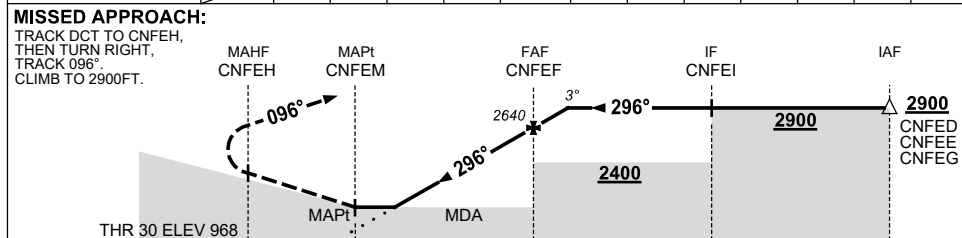
USE QNH

RNP RWY 30
NIFTY, WA (YCNF)

30 NOV 2023



NM TO NEXT WPT	CNFEH	1.3	2	3	4	CNFEF	0.8				
ALT (3° APCH PATH)		1470	1680	2000	2320	2640	2900				



NOTES

- 1. MAX IAS: INITIAL : 210KT.
- * 2. NO CIRCLING BEYOND 3NM S OF RWY 12/30.
- ‡ **CAUTION:** UNMARKED/UNLIT 1182FT TWR 017°/ 0.4NM FROM ARP.

CATEGORY	A	B	C	D
LNAV	1470 (502-2.8)			NOT APPLICABLE
CIRCLING	1580 (612-2.4)		1680 (712-4.0)	
ALTERNATE	(1112-4.4)		(1212-6.0)	

Changes: CHART TITLE, PBN SPECIFICATION BOX, Editorial.

CNFGN02-177