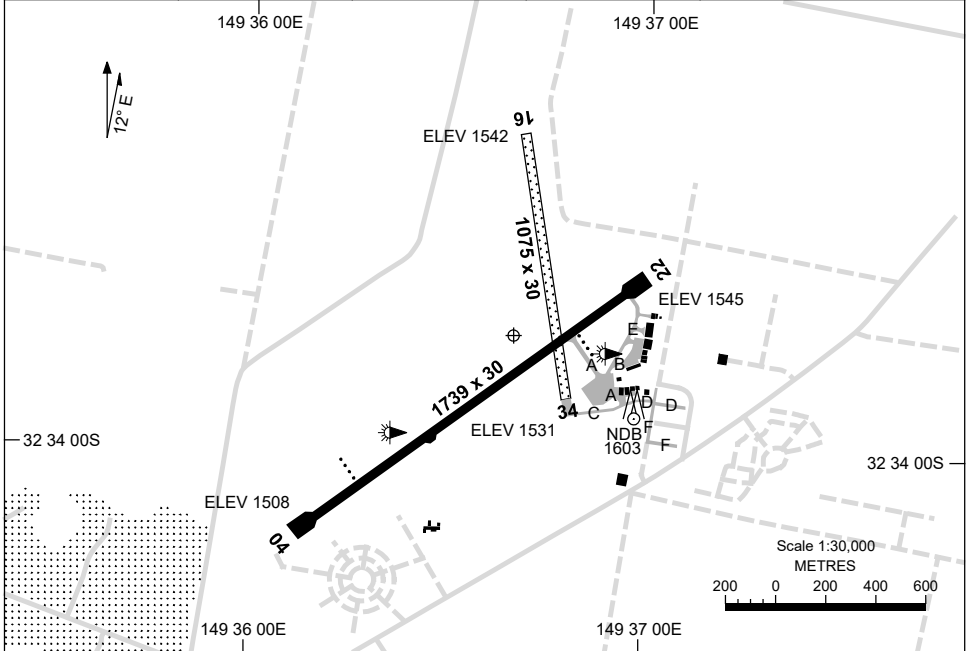


7 SEP 2023

AD ELEV 1545  
32 33 45S 149 36 40E

AERODROME CHART  
**MUDGEES, NSW (YMDG)**

FIA BN CEN 133.05	CTAF 126.7	PAL 122.3		Bearings are Magnetic Elevations in FEET AMSL
----------------------	---------------	--------------	--	--



RWY		AERODROME LIGHTING
		TAXIWAY : BLUE EDGE RL : PAL 122.3 , SDBY (1 MIN)
<b>04</b> <sup>041</sup>		PAPI 3.0° 45FT LIRL
<sup>221</sup> <b>22</b>		PAPI 3.0° 43FT LIRL
<b>16</b> <sup>159</sup>		NIL
<sup>339</sup> <b>34</b>		NIL

**NOTES**

1. AWIS (PHONE) 02 9353 6439.
2. FIA 133.05 AVBL IN CIRCUIT AREA.
3. PAPI RWY 04 MUST NOT BE USED BEYOND CIRCLING AREA.

Changes: NOTES.

MDGAD01-176

24 MAR 2022

FIA BN CEN 133.05	CTAF 126.7	PAL 122.3		Bearings are Magnetic Elevations in FEET AMSL
----------------------	---------------	--------------	--	--

**REFERENCE WAYPOINT MDG NDB**  
AWIS (PHONE) 02 9353 6439

\* NO CIRCLING IN SECTOR S OF RWY 04/22 AND E OF RWY 16/34.

**SECTOR A**

**MISSED APPROACH:**  
TURN AS APPROPRIATE,  
TRACK 150°. CLIMB TO 4800FT.

NM TO MDG NDB	25	15	7	5	3	0													
<b>CIRCLING MINIMA</b>	A,B: 3200-2.4		C: 3520-4.0		D: N/A														
NM TO MDG NDB	6.8	6	5	4	3	2.7	2	1.7											
ALT (3° APCH PATH)	4800	4550	4230	3920	3600	3520	3280	3200											

**SECTOR B**

**MISSED APPROACH:**  
TURN RIGHT,  
TRACK 300°. CLIMB TO 4100FT.

NM TO MDG NDB	25	15	8	5	3	0													
<b>CIRCLING MINIMA</b>	A,B: 3160-2.4		C: 3520-4.0		D: N/A														
NM TO MDG NDB	5.5	5	4	3	2	1.5	1	0.4											
ALT (3° APCH PATH)	4800	4630	4320	4000	3680	3520	3360	3160											

**SECTOR C**

**MISSED APPROACH:**  
TURN AS APPROPRIATE,  
TRACK 300°. CLIMB TO 4100FT.

NM TO MDG NDB	25	15	7	5	3	2	0												
<b>CIRCLING MINIMA</b>	A,B: 3110-2.4		C: 3520-4.0		D: N/A														
NM TO MDG NDB	5.5	5	4	3	2	1.5	1	0											
ALT (3° APCH PATH)	4800	4630	4320	4000	3680	3520	3360	3070											

Changes: SECTOR C CAT A/B MINIMA

MDGDG01-170

# GNSS ARRIVAL PROCEDURES MUDGEES, NSW (YMDG) Page 2

15 AUG 2019

FIA <b>BN CEN 133.05</b>	CTAF <b>126.7</b>	PAL <b>122.3</b>		Bearings are Magnetic Elevations in FEET AMSL
-----------------------------	----------------------	---------------------	--	--

25 NM MSA

4100

MDG NDB

B-170°

B-245°

4800

**REFERENCE WAYPOINT MDG NDB**

AWIS (PHONE) 02 9353 6439

\* NO CIRCLING

10 NM MSA 4500

**MDG** **NDB 398**

AD ELEV 1545

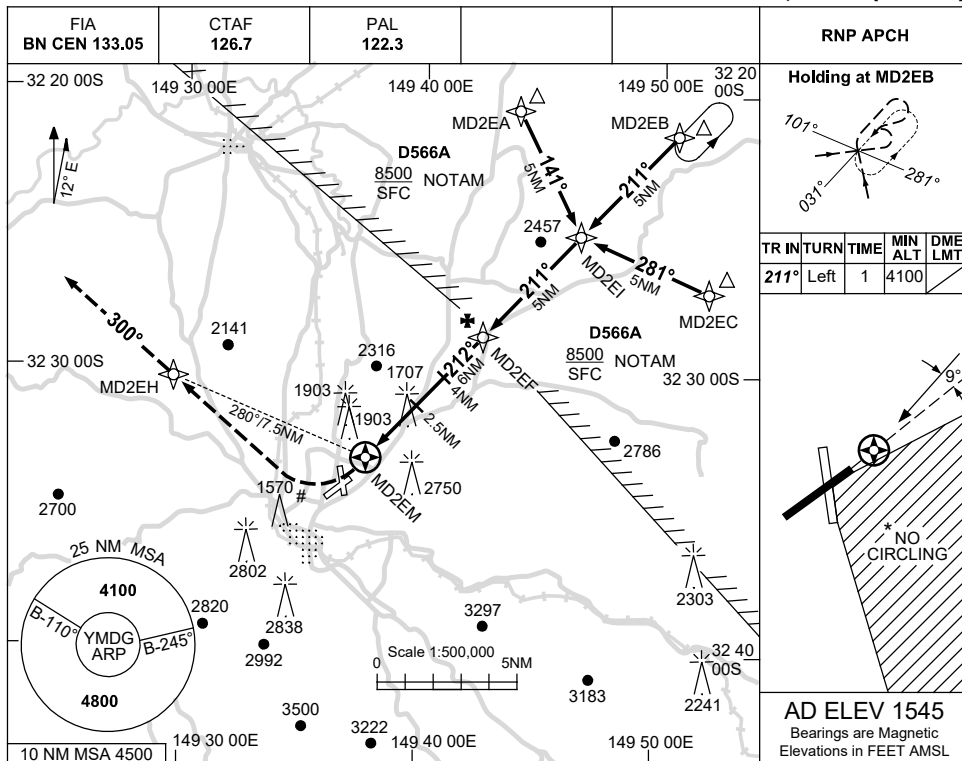
\* NO CIRCLING IN SECTOR S OF RWY 04/22 AND E OF RWY 16/34.

<b>SECTOR D</b>							<b>MISSED APPROACH:</b>
	<p>TURN LEFT, TRACK 300°. CLIMB TO 4100FT.</p>						
NM TO MDG NDB	25	15	6	5	3	0	
<b>CIRCLING MINIMA</b>	A,B: 3420-2.4			C: 3520-4.0		D: N/A	
NM TO MDG NDB	6	5	4	3	2	1.7	
ALT (3° APCH PATH)	4800	4480	4160	3840	3520	3420	

USE QNH

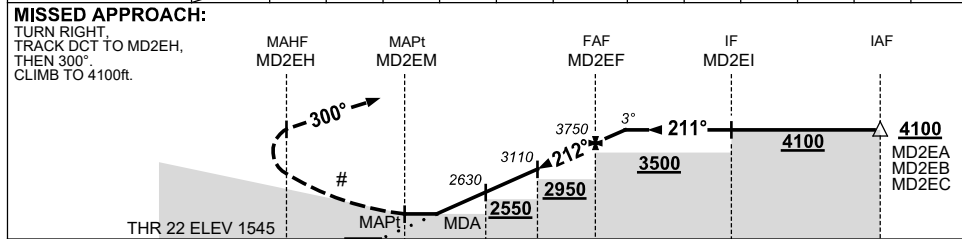
RNP RWY 22  
**MUDGEES, NSW (YMDG)**

21 MAR 2024



**AD ELEV 1545**  
 Bearings are Magnetic  
 Elevations in FEET AMSL

NM TO NEXT WPT	MD2EM	1.9	2	3	4	5	MD2EF	1.1				
ALT (3° APCH PATH)		2430	2470	2790	3110	3430	3750	4100				



- NOTES**
- MAX IAS:  
 HOLDING: 210KT.  
 INITIAL : 210KT.  
 # MAP TURN: 190KT.
  - NO CIRCLING IN SECTOR S OF RWY 04/22 AND E OF RWY 16/34.
  - AWIS (PHONE)  
 02 9353 6439

CATEGORY	A	B	C	D
LNAV	2430 (885-5.0)			NOT APPLICABLE
CIRCLING *	3110 (1565-2.4)		3520 (1975-4.0)	
ALTERNATE	(2065-4.4)		(2475-6.0)	

Changes: D566A ADDED, Editorial.

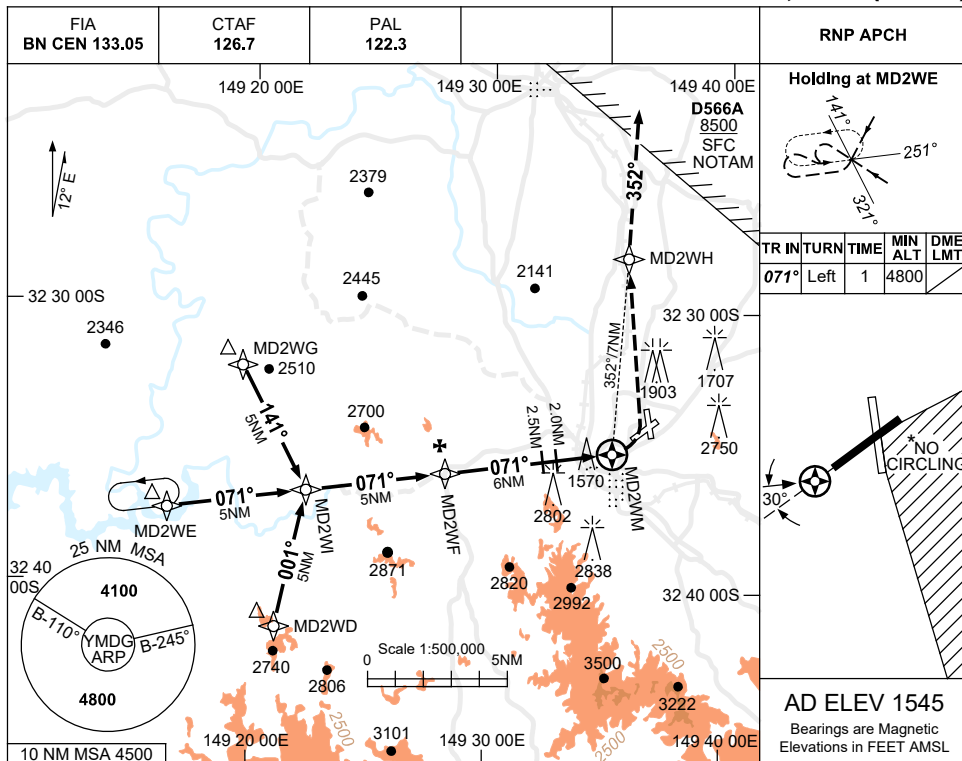
MDGGN01-178

USE QNH

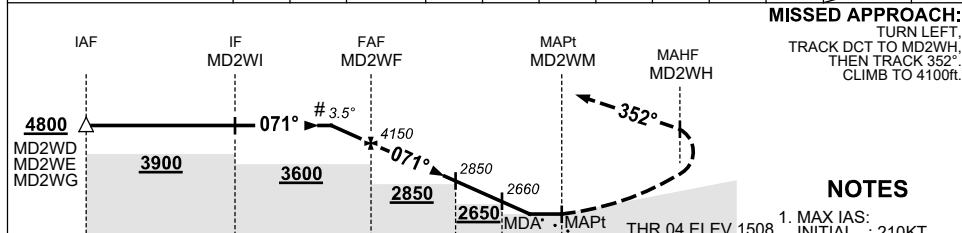
RNP RWY 04

21 MAR 2024

MUDGEES, NSW (YMDG)



NM TO NEXT WPT	1.8	1	MD2WF	5	4	3	2.5	2	1.3	0.9	MD2WM
ALT (# 3.5° APCH PATH)	4800	4520	4150	3780	3400	3030	2850	2660	2390	2260	



**MISSED APPROACH:**  
TURN LEFT, TRACK DCT TO MD2WH, THEN TRACK 352°, CLIMB TO 4100ft.

**NOTES**

- MAX IAS: INITIAL : 210KT. CAT C MAPCH TURN: 160KT.
- NO CIRCLING IN SECTOR S OF RWY 04/22 AND E OF RWY 16/34.
- AWIS (PHONE) 02 9353 6439
- APCH PATH ANGLE DOES NOT COINCIDE WITH PAPI ON SLOPE INDICATION.
- COLOUR: SEE SPEC NOTICES.

CATEGORY	A	B	C	D
LNAV	2390 (882-4.4)		NOT AUTHORISED	NOT APPLICABLE
LNAV (3.3% MAPCH)	2260 (752-3.7)			
CIRCLING*	3110 (1565-2.4)		3520 (1975-4.0)	
ALTERNATE	(2065-4.4)		(2475-6.0)	

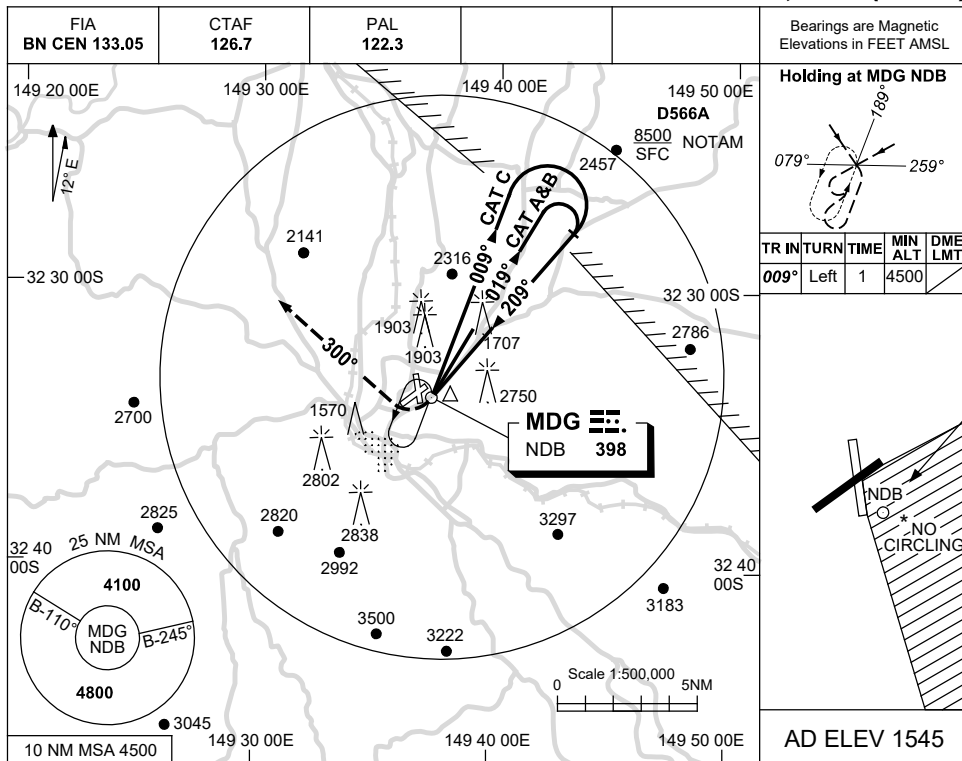
Changes: D566A ADDED, Editorial.

MDGGN02-178

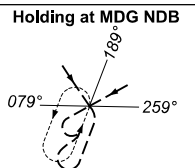
USE QNH

NDB RWY 22  
**MUDGEES, NSW (YMDG)**

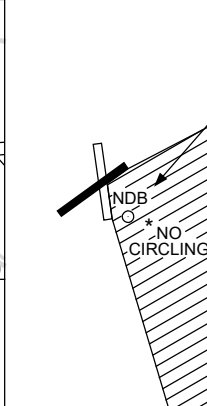
21 MAR 2024



Bearings are Magnetic  
 Elevations in FEET AMSL

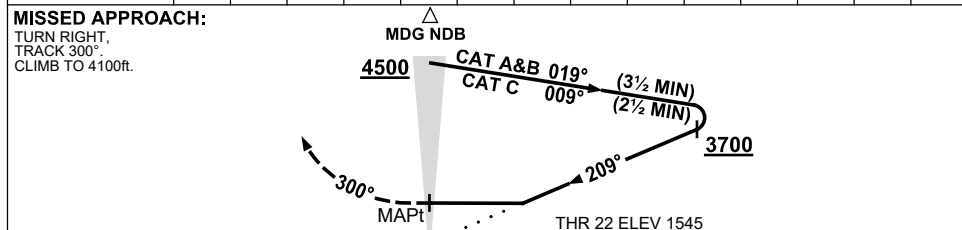


TR	IN	TURN	TIME	MIN	DME
				ALT	LMT
009°	Left	1	4500		



AD ELEV 1545

DME DIST	ALT	NOT APPLICABLE



**NOTES**

- MAX IAS:  
 INITIAL :  
 CAT A & B 140KT.  
 CAT C 210KT.
- NO CIRCLING IN SECTOR S OF RWY 04/22 AND E OF RWY 16/34.
- AWIS (PHONE)  
 02 9353 6439

CATEGORY	A	B	C	D
S-I NDB	3110 (1565-5.0)			NOT APPLICABLE
CIRCLING *	3030 (1485-2.4)	3520 (1975-4.0)		
ALTERNATE	(1985-4.4)	(2475-6.0)		

Changes: D566A ADDED, Editorial.

MDGNB01-178