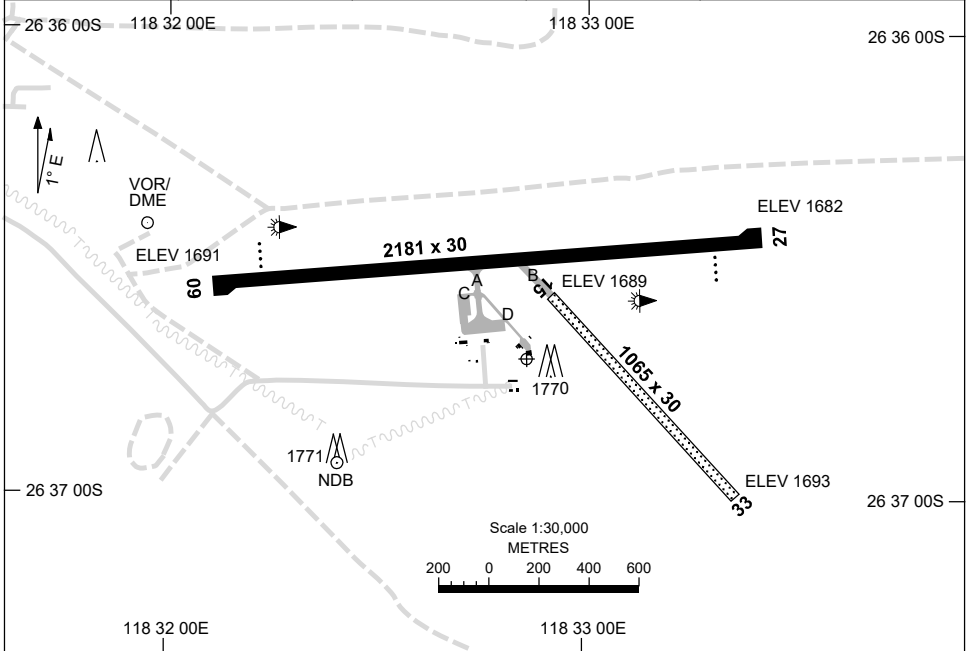


2 DEC 2021

AD ELEV 1713
26 36 42S 118 32 52E

AERODROME CHART
MEEKATHARRA, WA (YMEK)

AWIS 120.45	FIA ML CEN 122.6	CTAF+AFRU 126.55	AFRU+PAL 126.55	Bearings are Magnetic Elevations in FEET AMSL
-----------------------	----------------------------	----------------------------	---------------------------	--



RWY		AERODROME LIGHTING
		TAXIWAY : BLUE EDGE RL : AFRU+PAL 126.55 , SDBY (45 SEC)
09 <small>084</small>		PAPI 3.0° 48FT LIRL
<small>264</small> 27		PAPI 3.0° 48FT LIRL
15 <small>138</small>		NIL
<small>318</small> 33		NIL

NOTES

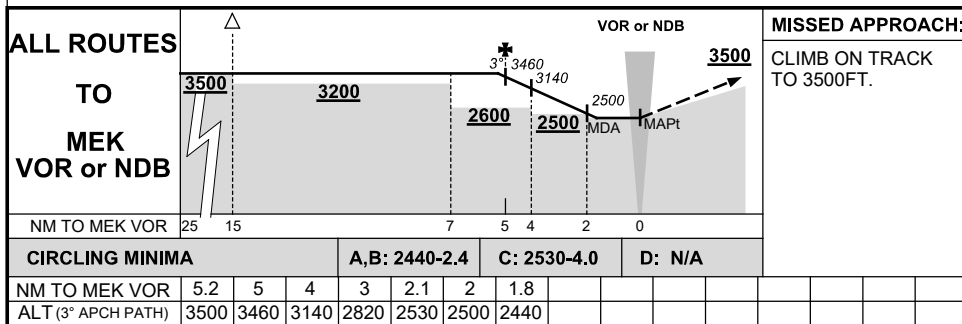
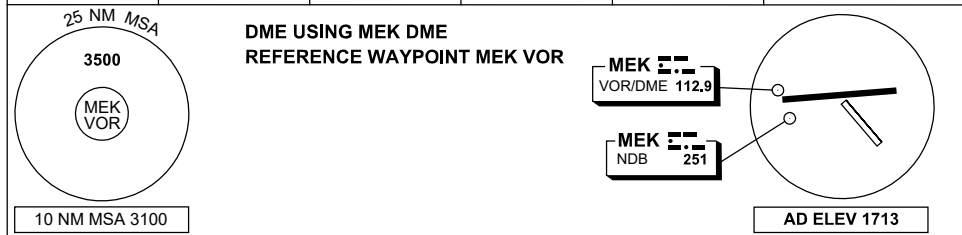
Changes: NOTES 1 & 2 DELETED.

MEKAD01-169

DME or GNSS ARRIVAL PROCEDURES MEEKATHARRA, WA (YMEK)

13 AUG 2020

AWIS 120.45	FIA ML CEN 122.6	CTAF+AFRU 126.55	AFRU+PAL 126.55		Bearings are Magnetic Elevations in FEET AMSL
----------------	---------------------	---------------------	--------------------	--	--

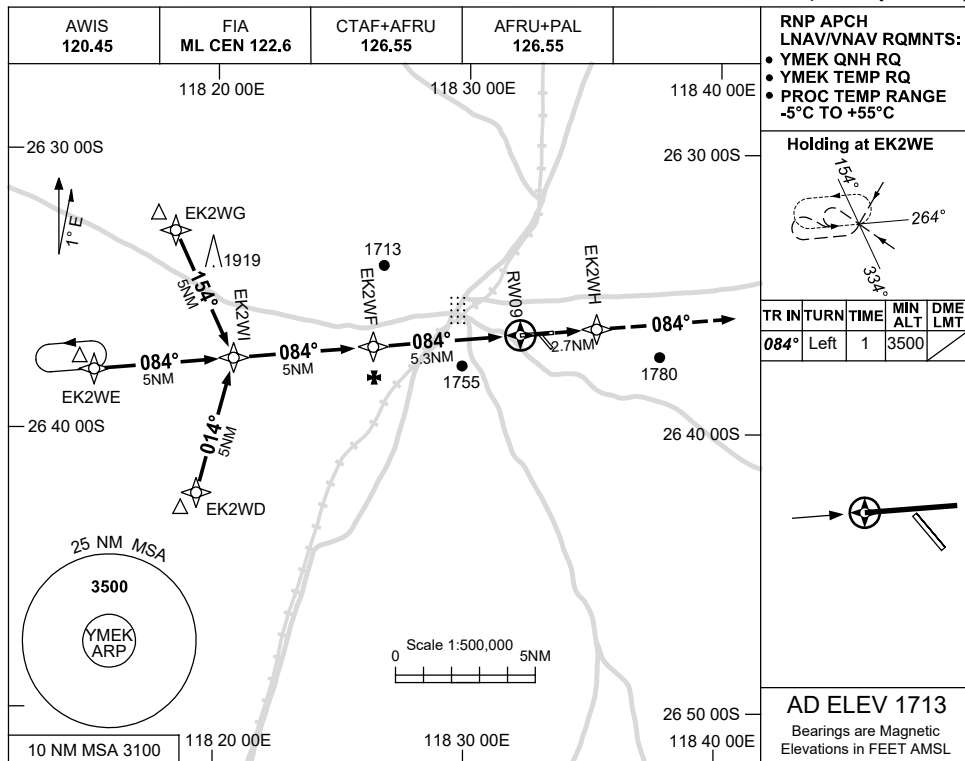


USE QNH

RNP RWY 09

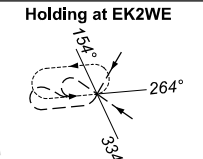
7 SEP 2023

MEEKATHARRA, WA (YMEK)

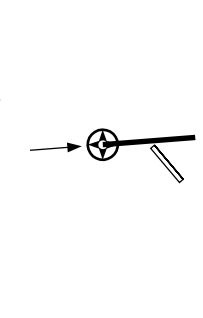


RNP APCH LNAV/VNAV RQMNTS:

- YMEK QNH RQ
- YMEK TEMP RQ
- PROC TEMP RANGE -5°C TO +55°C

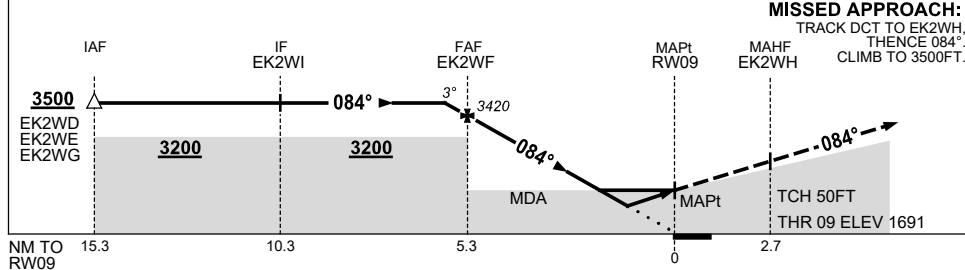


TR IN	TURN	TIME	MIN ALT	DME LMT
084°	Left	1	3500	



AD ELEV 1713
Bearings are Magnetic
Elevations in FEET AMSL

NM TO NEXT WPT	0.2	EK2WF	4	3	2	1.6	1	RW09				
ALT (3° APCH PATH)	3500	3420	3010	2700	2380	2260	2060					



MISSED APPROACH:
TRACK DCT TO EK2WH,
THENCE 084°,
CLIMB TO 3500FT.

NOTES

1. MAX IAS:
INITIAL : 210KT.

CATEGORY	A	B	C	D
LNAV/VNAV		2060 (369-2.1)		NOT APPLICABLE
LNAV		2260 (569-3.2)		
CIRCLING	2440 (727-2.4)		2530 (817-4.0)	
ALTERNATE	(1227-4.4)		(1317-6.0)	

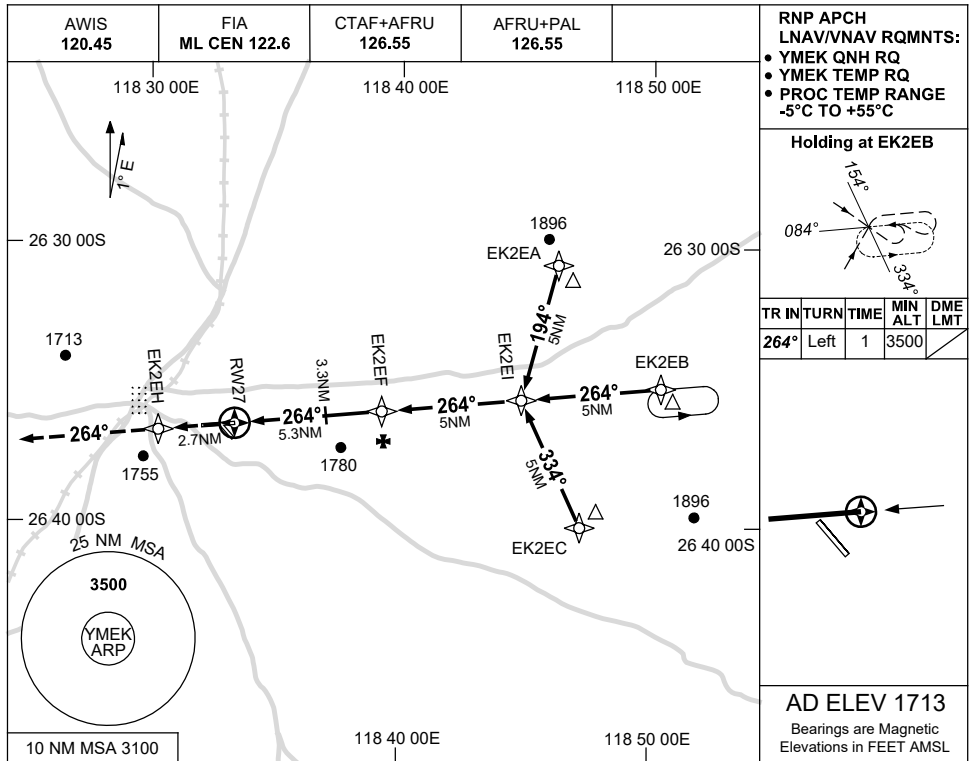
Changes: CHART TITLE, PBN SPECIFICATION BOX, Editorial. MEKGN01-176



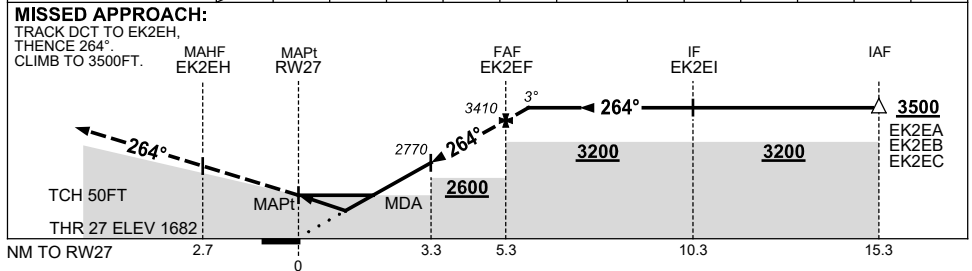
USE QNH

RNP RWY 27
MEEKATHARRA, WA (YMEK)

7 SEP 2023



NM TO NEXT WPT	RWY27	1	1.7	2	3.3	4	EK2EF	0.3				
ALT (3° APCH PATH)		2060	2260	2370	2770	3000	3410	3500				



NOTES

1. MAX IAS:
INITIAL : 210KT.

CATEGORY	A	B	C	D
LNAV/VNAV		2060 (378-2.1)		NOT APPLICABLE
LNAV		2260 (578-3.3)		
CIRCLING	2440 (727-2.4)		2530 (817-4.0)	
ALTERNATE	(1227-4.4)		(1317-6.0)	

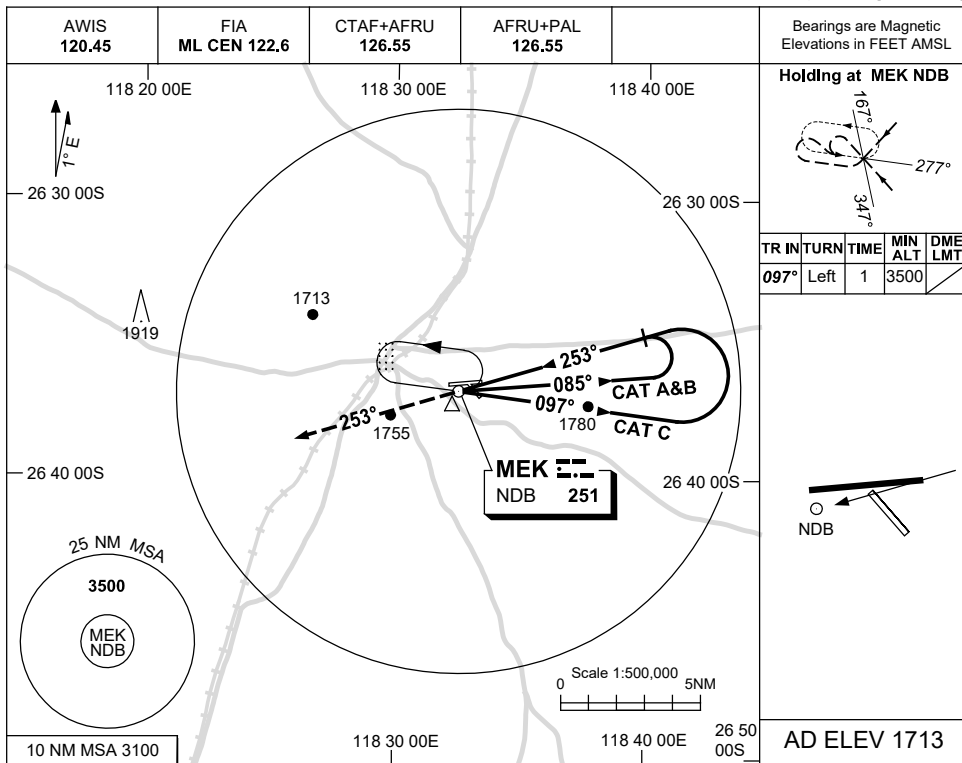
Changes: CHART TITLE, PBN SPECIFICATION BOX, Editorial.

MEKGN02-176

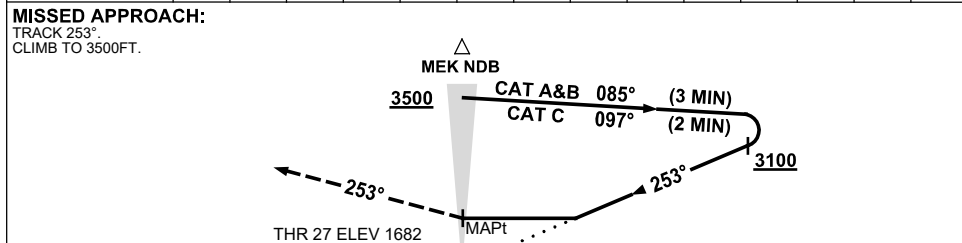
USE QNH

NDB RWY 27
MEEKATHARRA, WA (YMEK)

15 JUN 2023



DME DIST	NOT APPLICABLE									
ALT										



NOTES

- MAX IAS:
 INITIAL :
 CAT C : 210KT.

CATEGORY	A	B	C	D
S-I NDB	2440 (758-4.3)			NOT APPLICABLE
CIRCLING	2440 (727-2.4)	2530 (817-4.0)		
ALTERNATE	(1227-4.4)		(1317-6.0)	

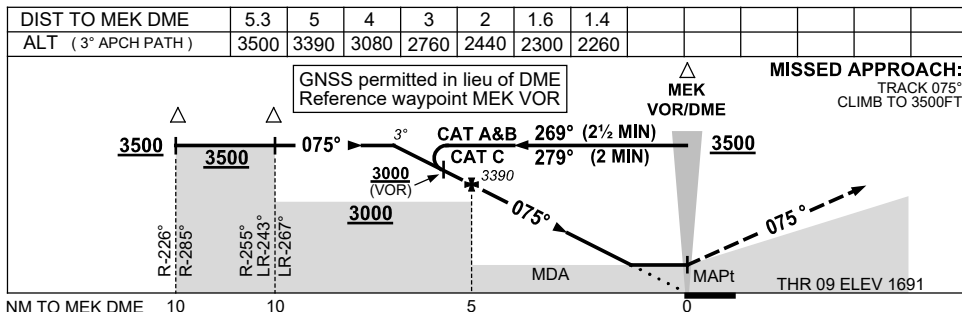
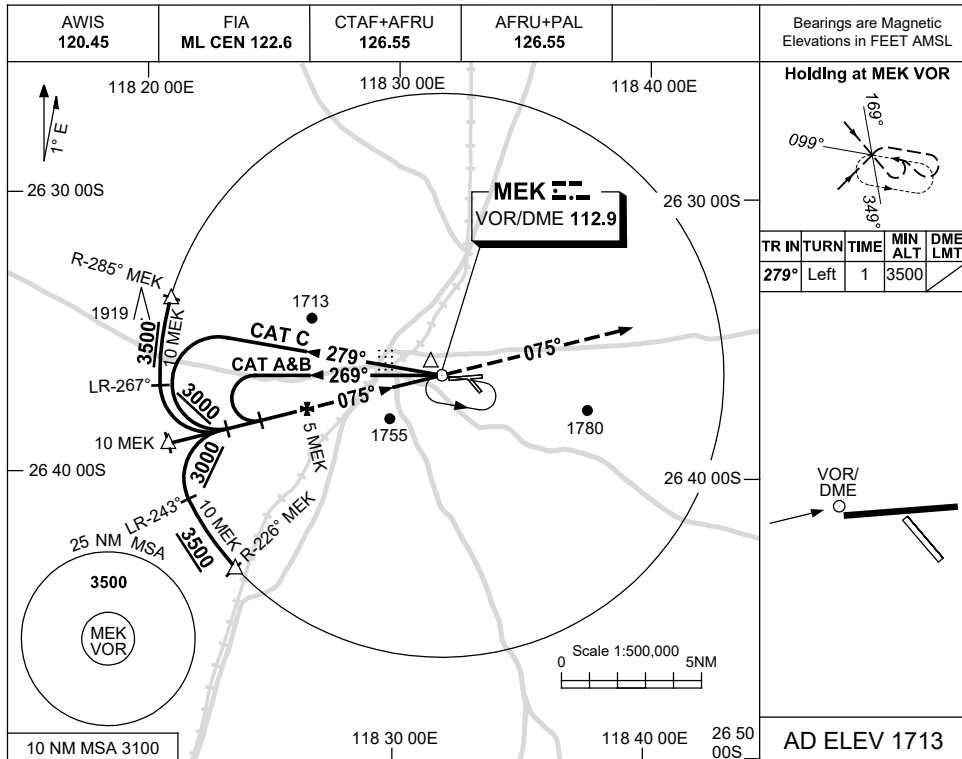
Changes: MAG TRACKS, NOTE, Editorial.

MEKNB01-175

USE QNH

VOR RWY 09
MEEKATHARRA, WA (YMEK)

15 JUN 2023



NOTES

CATEGORY	A	B	C	D
S-I VOR		2300 (609-3.5)		NOT APPLICABLE
S-I VOR/DME		2260 (569-3.2)		
CIRCLING	2440 (727-2.4)		2530 (817-4.0)	
ALTERNATE		(1227-4.4)	(1317-6.0)	

1. MAX IAS :
HOLDING: 210KT.
INITIAL : 210KT.

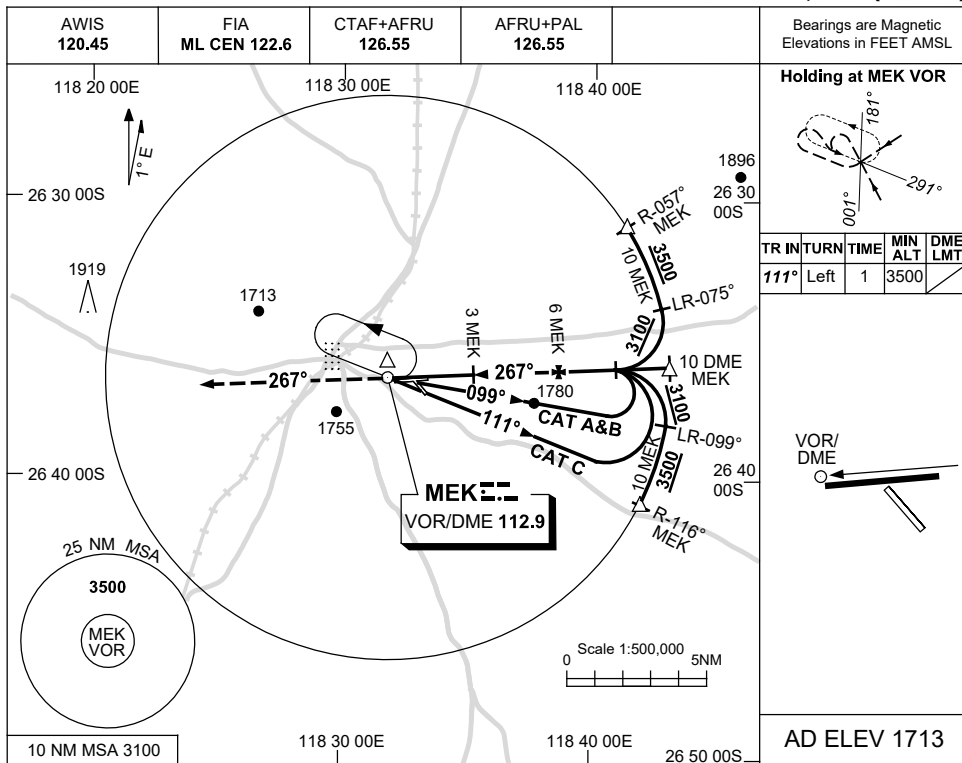
Changes: MAG TRACKS, DIST/ALT TABLE, GRID COORD FORMAT, Editorial.

MEKVO01-175

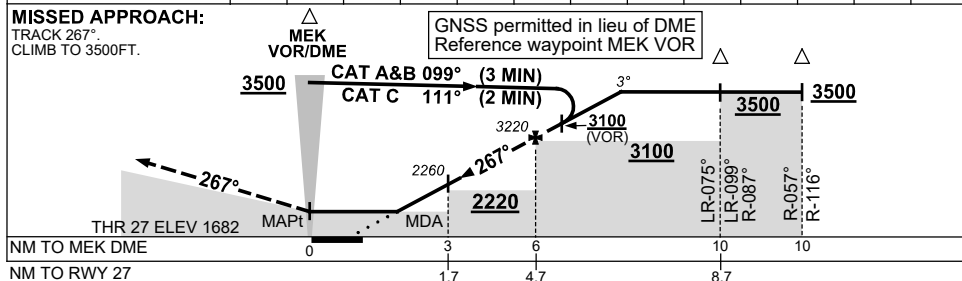
USE QNH

VOR RWY 27
MEEKATHARRA, WA (YMEK)

15 JUN 2023



DIST TO MEK DME	3	3.3	4	5	6	6.9							
ALT (3° APCH PATH)	2260	2370	2580	2900	3220	3500							



NOTES

CATEGORY	A	B	C	D
S-I VOR		2370 (688-3.9)		NOT APPLICABLE
S-I VOR/DME		2260 (578-3.3)		
CIRCLING	2440 (727-2.4)		2530 (817-4.0)	
ALTERNATE	(1227-4.4)		(1317-6.0)	

1. MAX IAS:
 INITIAL : 210KT.

Changes: MAG TRACKS.

MEKVO02-175