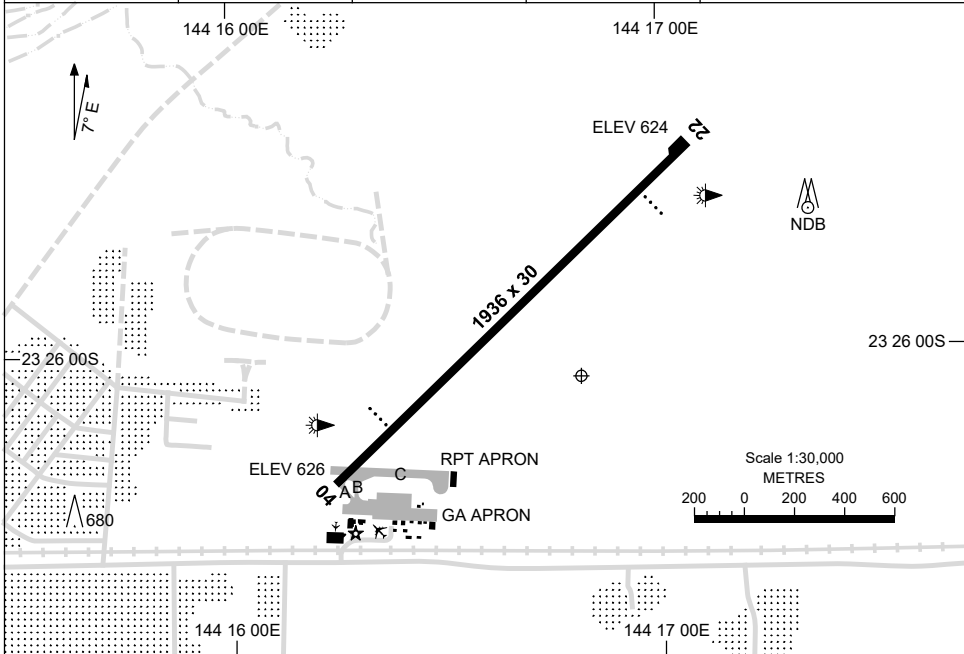


7 SEP 2023

AD ELEV 627  
23 26 03S 144 16 49E

**AERODROME CHART**  
**LONGREACH, QLD (YLRE)**

FIA BN CEN 122.1	CTAF+AFRU 126.7	AFRU+PAL 126.7		Bearings are Magnetic Elevations in FEET AMSL
---------------------	--------------------	-------------------	--	--



AERODROME LIGHTING						
<b>RWY</b>	ABN : FLG W 8 SEC TAXIWAY : BLUE EDGE ON A & C RL : AFRU+PAL 126.7 , SDBY , PTBL (EMERG ONLY, 90 MIN PN)					
	<table border="0"> <tr> <td><b>04</b></td> <td><sup>039</sup></td> <td>PAPI 3.0° 46FT LIRL PTBL</td> </tr> <tr> <td><sup>219</sup></td> <td><b>22</b></td> <td>PAPI 3.0° 46FT LIRL PTBL</td> </tr> </table>	<b>04</b>	<sup>039</sup>	PAPI 3.0° 46FT LIRL PTBL	<sup>219</sup>	<b>22</b>
<b>04</b>	<sup>039</sup>	PAPI 3.0° 46FT LIRL PTBL				
<sup>219</sup>	<b>22</b>	PAPI 3.0° 46FT LIRL PTBL				

**NOTES**

- HJ, PAL ACTIVATES PAPI ONLY.
- AWIS (PHONE) 07 3564 3723

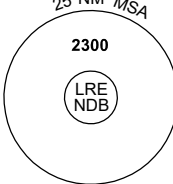
Changes: NOTES.

LREAD01-176

# GNSS ARRIVAL PROCEDURES LONGREACH, QLD (YLRE)

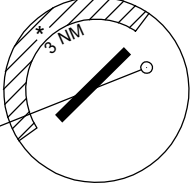
15 AUG 2019

FIA BN CEN 122.1	CTAF+AFRU 126.7	AFRU+PAL 126.7			Bearings are Magnetic Elevations in FEET AMSL
---------------------	--------------------	-------------------	--	--	--



25 NM MSA  
2300  
LRE NDB

**REFERENCE WAYPOINT LRE NDB**  
AWIS (PHONE) 07 3564 3723



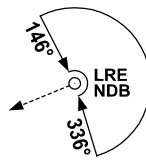
3 NM  
LRE : 353°  
NDB 353

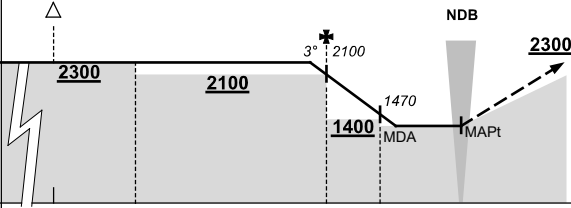
10 NM MSA 2300

AD ELEV 627

\* NO CIRCLING N OF RWY 04/22 BEYOND 3 NM.

**SECTOR A**





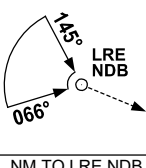
NDB

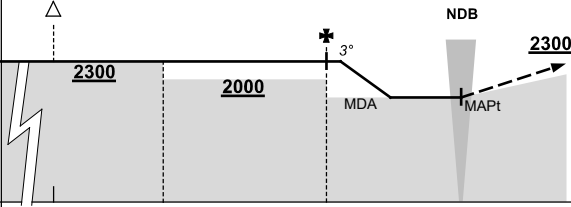
**MISSED APPROACH:**  
CLIMB ON TRACK TO 2300FT.

**NOTE:**  
REMAIN CLEAR OF R608.

NM TO LRE NDB	25	15	12	5	3	0															
<b>CIRCLING MINIMA</b>						<b>A,B: 1310-2.4</b>	<b>C: 1410-4.0</b>	<b>D: N/A</b>													
NM TO LRE NDB	5.6	5	4	3	2.8	2.5															
ALT (3° APCH PATH)	2300	2100	1780	1470	1410	1310															

**SECTOR B**





NDB

**MISSED APPROACH:**  
CLIMB ON TRACK TO 2300FT.

NM TO LRE NDB	25	15	11	5	0																
<b>CIRCLING MINIMA</b>						<b>A,B: 1710-2.4</b>	<b>C: 1710-4.0</b>	<b>D: N/A</b>													
NM TO LRE NDB	4.5	4	3	2.7																	
ALT (3° APCH PATH)	2300	2140	1820	1710																	

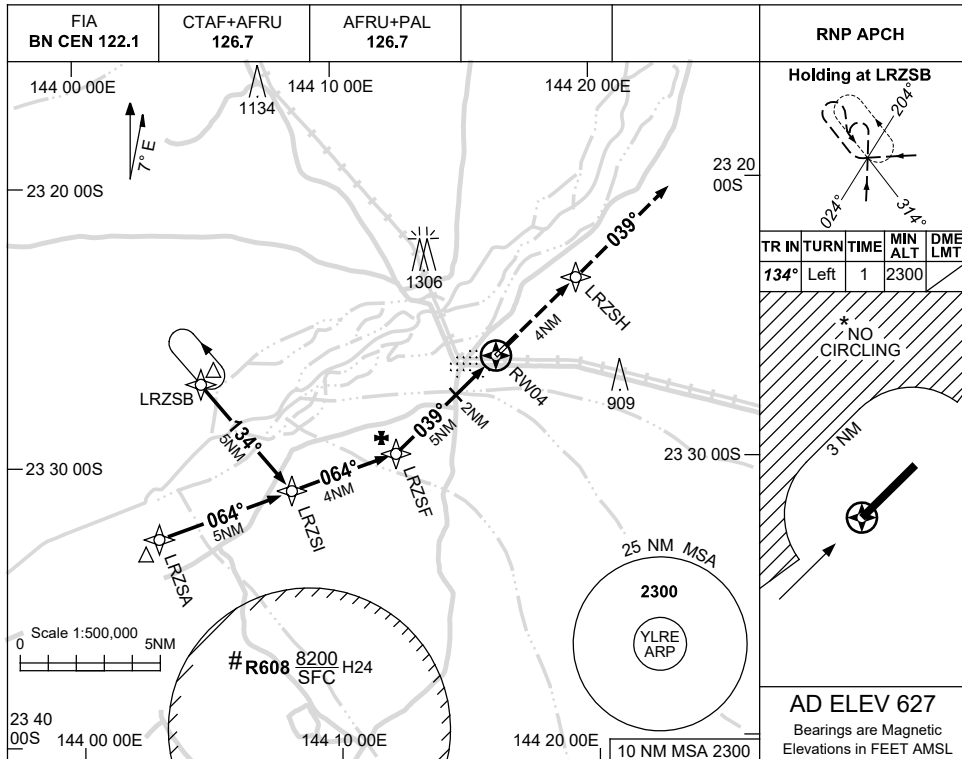
Changes: SECTOR BOUNDARIES, SECTOR A MNM, AWIS PHONE, Editorial.

LREDG01-160

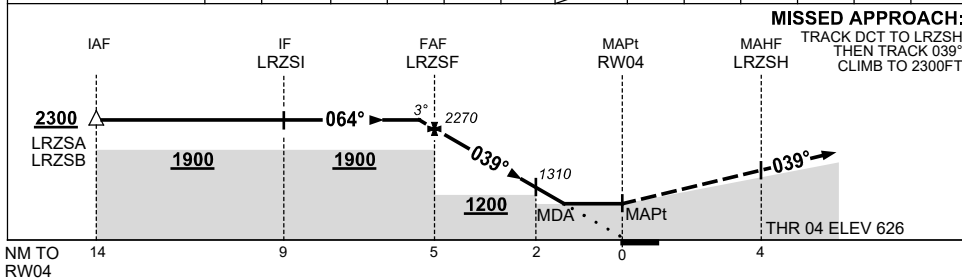
USE QNH

RNP RWY 04  
LONGREACH, QLD (YLRE)

16 JUN 2022



NM TO NEXT WPT	0.1	LRZSF	4	3	2	1.5	RW04						
ALT (3° APCH PATH)	2300	2270	1950	1630	1310	1140							



**NOTES**

1. MAX IAS: INITIAL : 210KT.
2. NO CIRCLING NW OF RWY 04/22 BEYOND 3NM.
3. CAUTION: R608 H24
4. AWIS PHONE 07 3564 3723

CATEGORY	A	B	C	D
LNAV	1140 (513-2.9)			NOT APPLICABLE
CIRCLING *	1250 (623-2.4)		1410 (783-4.0)	
ALTERNATE	(1123-4.4)		(1283-6.0)	

Changes: CHART TITLE, PBN SPECIFICATION BOX.

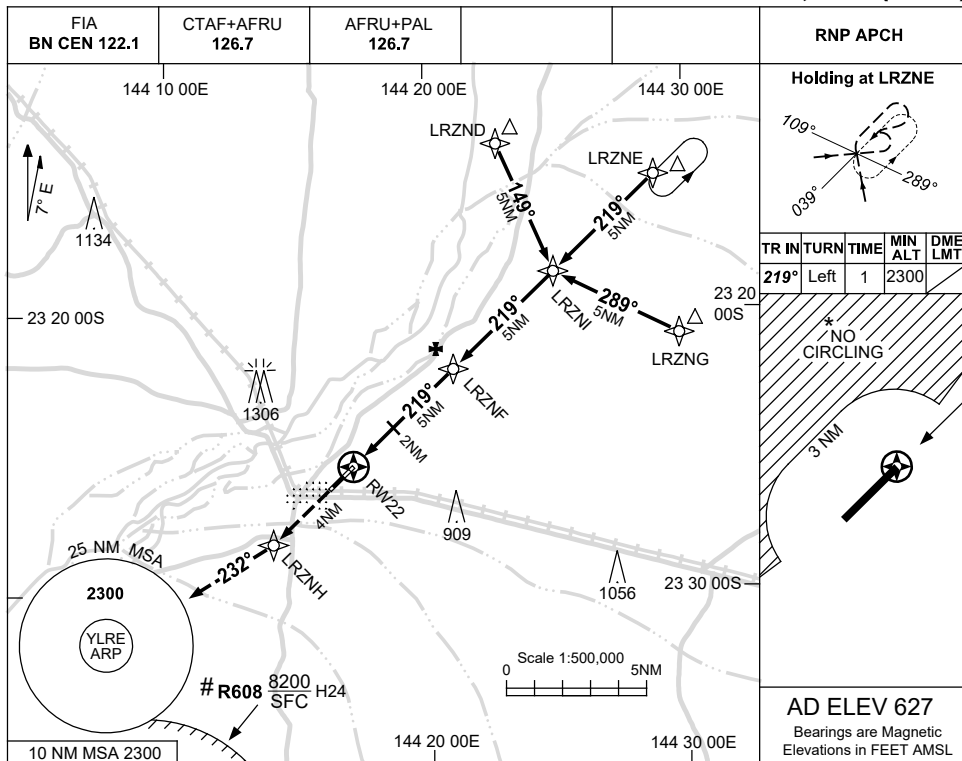
LRGN01-171



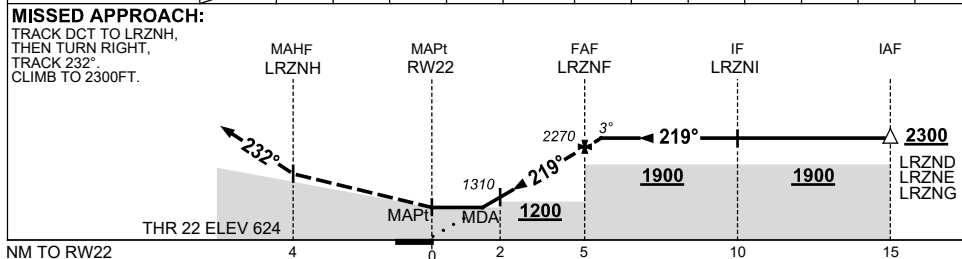
USE QNH

RNP RWY 22  
LONGREACH, QLD (YLRE)

16 JUN 2022



NM TO NEXT WPT	RW22	1.5	2	3	4	LRZNF	0.1				
ALT (3° APCH PATH)		1140	1310	1630	1950	2270	2300				



**NOTES**

- MAX IAS: INITIAL : 210KT.
- NO CIRCLING NW OF RWY 04/22 BEYOND 3NM.
- CAUTION:** R608 H24
- AWIS PHONE 07 3564 3723

CATEGORY	A	B	C	D
LNAV	1140 (513-2.9)			NOT APPLICABLE
CIRCLING *	1250 (623-2.4)		1410 (783-4.0)	
ALTERNATE	(1123-4.4)		(1283-6.0)	

Changes: CHART TITLE, PBN SPECIFICATION BOX.

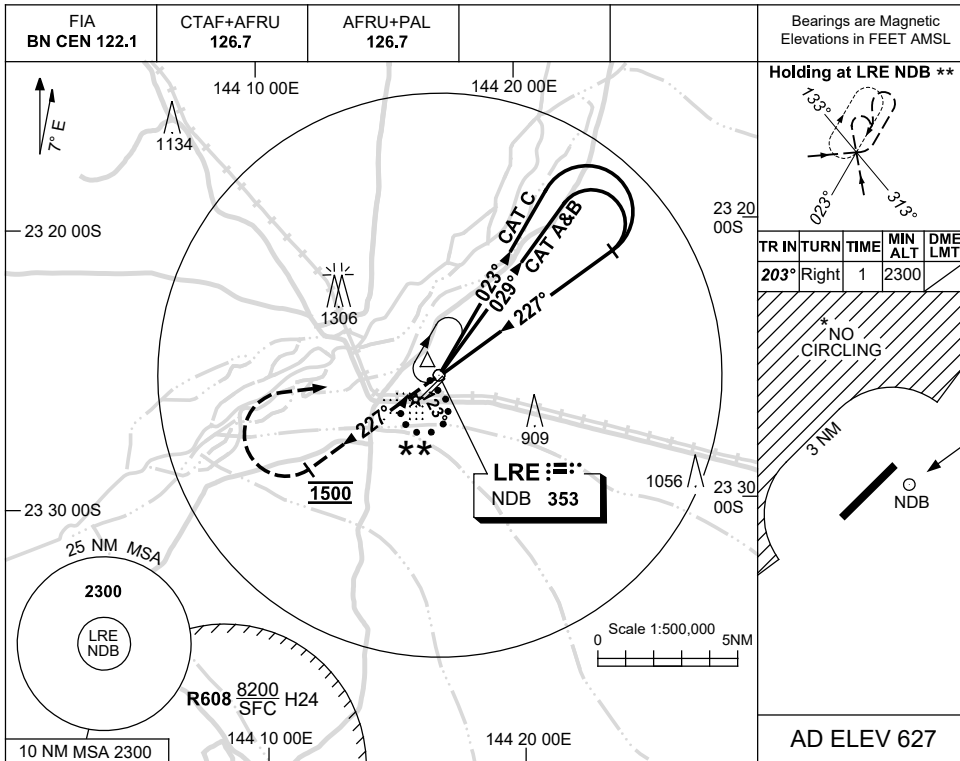
LRGN02-171

USE QNH

NDB-A

15 AUG 2019

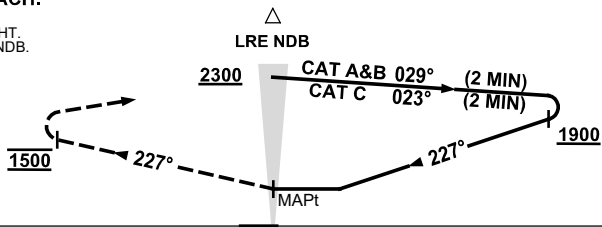
LONGREACH, QLD (YLRE)



DME DIST	NOT APPLICABLE										
ALT											

**MISSED APPROACH:**

TRACK 227°. AT 1500FT TURN RIGHT. TRACK DCT TO LRE NDB. CLIMB TO 2300FT.



**NOTES**

1. MAX IAS:  
INITIAL : 210KT,  
80/260 REVERSAL: 210KT.
- \*2. NO CIRCLING N OF RWY 04/22 BEYOND 3NM.
- \*\*3. PROC TURN (80°/260°)REQD TO JOIN PROC FROM HOLD.
4. AWIS PHONE 07 3564 3723

CATEGORY	A	B	C	D
CIRCLING *	1250 (623-2.4)		1410 (783-4.0)	NOT APPLICABLE
ALTERNATE	(1123-4.4)		(1283-6.0)	

Changes: MAG VAR, TRACK BRGS, CO-ORD FORMAT, CAT C CIRCLING NMN, NOTE 4, Editorial.

LREN01-160

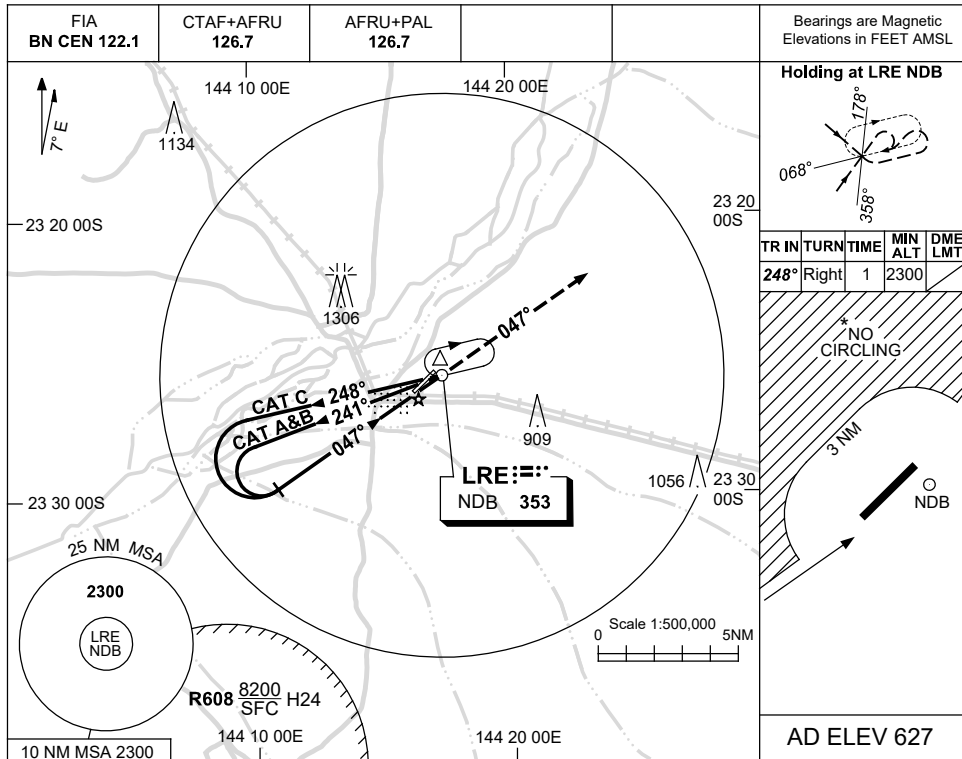


USE QNH

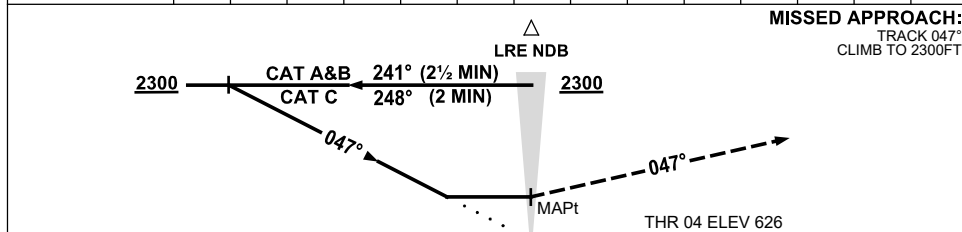
NDB RWY 04

LONGREACH, QLD (YLRE)

15 AUG 2019



DME DIST	NOT APPLICABLE							
ALT								



**NOTES**

- MAX IAS:  
INITIAL :  
CAT A&B 140KT.  
CAT C 180KT.
- NO CIRCLING N OF RWY 04/22 BEYOND 3NM.
- AWIS PHONE  
07 3564 3723

CATEGORY	A	B	C	D
S-I NDB	1250 (623-3.5)			NOT APPLICABLE
CIRCLING*	1250 (623-2.4)	1410 (783-4.0)		
ALTERNATE	(1123-4.4)		(1283-6.0)	

Changes: MAG VAR, CAT C CIRCLING, CO-ORD FORMAT, NOTE 3, Editorial.

LRN02-160