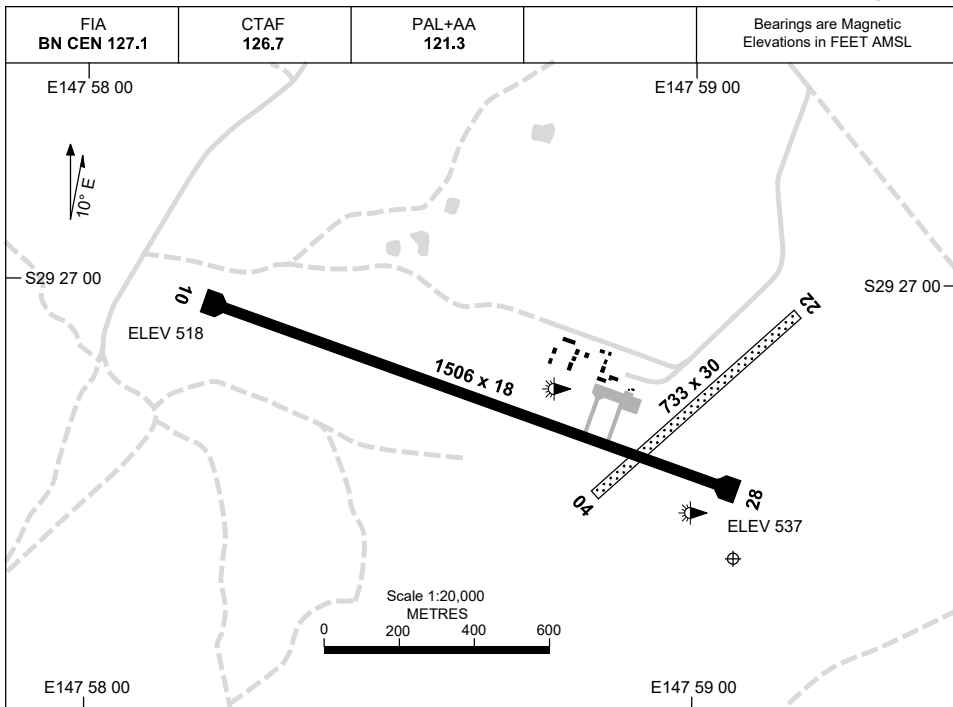


16 JUN 2022

AD ELEV 540
S29 27 24 E147 59 04

AERODROME CHART
LIGHTNING RIDGE, NSW (YLRD)



AERODROME LIGHTING	
RWY	TAXIWAY : BLUE EDGE RL : PAL+AA 121.3 , PTBL , SDBY (15 MIN PN) (ARO: 0417 691 740)
10 <small>099</small>	LIRL
28 <small>279</small>	LIRL
04 <small>037</small>	NIL
22 <small>217</small>	NIL

NOTES

1. FIA FREQ 127.1 AVBL AT 3000FT.

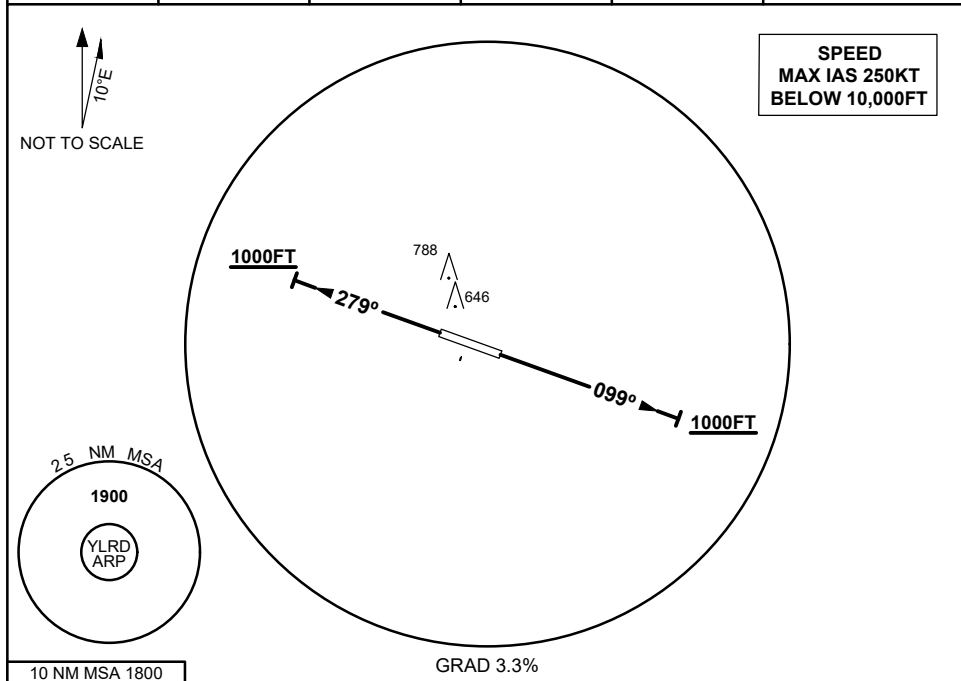
Changes: PAL+AA.

LRDAD01-171

**STANDARD INSTRUMENT DEPARTURES (SID)
LIGHTNING RIDGE ONE DEPARTURE
LIGHTNING RIDGE, NSW (YLRD)**

16 JUN 2022

FIA BN CEN 127.1	CTAF 126.7	PAL + AA 121.3			Bearings are Magnetic Elevations in FEET AMSL
----------------------------	----------------------	--------------------------	--	--	--



LIGHTNING RIDGE ONE DEPARTURE

RWY 10

- Track 099°
- AT or ABV 1000FT turn as required
- Continue climb to 1900FT
- Intercept flight plan route

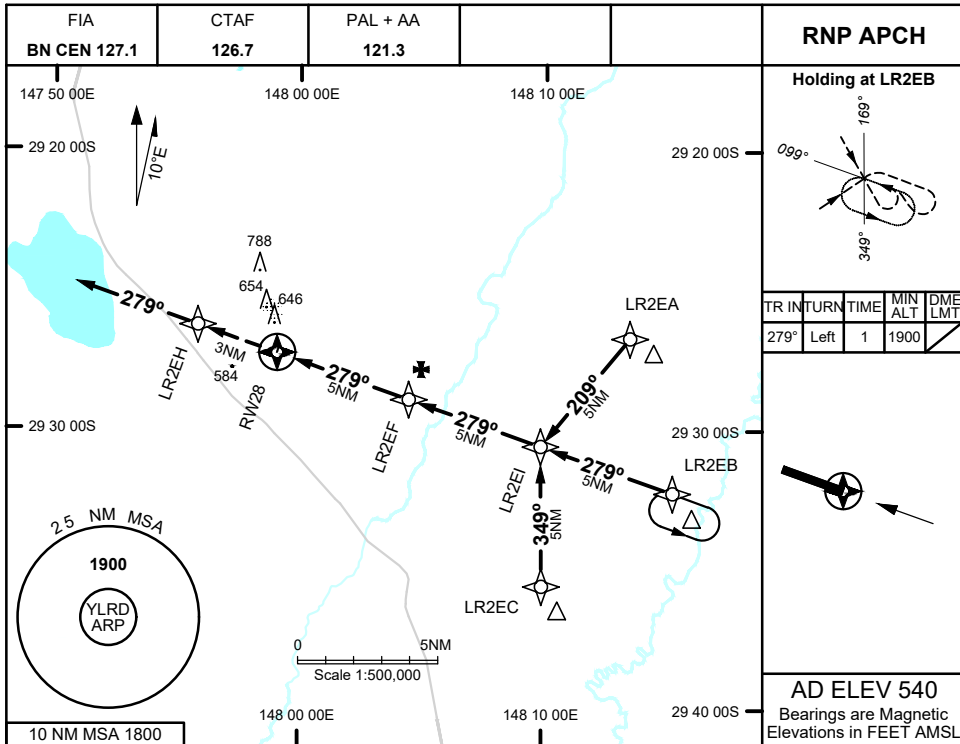
RWY 28

- Track 279°
- AT or ABV 1000FT turn as required
- Continue climb to 1900FT
- Intercept flight plan route

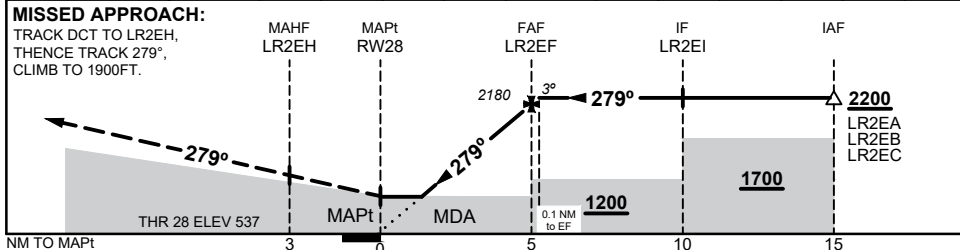


16 JUN 2022

LIGHTNING RIDGE, NSW (YLRD)



NM TO NEXT WPT	RW28	1.3	2	3	4	LR2EF	0.1				
ALT (3° APCH PATH)		990	1220	1540	1860	2180	2200				



NOTES

- MAX IAS: INITIAL : 210KTS

CATEGORY	A	B	C	D
LNAV	990 (450 - 2.5)			NOT APPLICABLE
CIRCLING	1110 (570 - 2.4)		1290 (750 - 4.0)	
ALTERNATE	(1070 - 4.4)		(1250 - 6.0)	

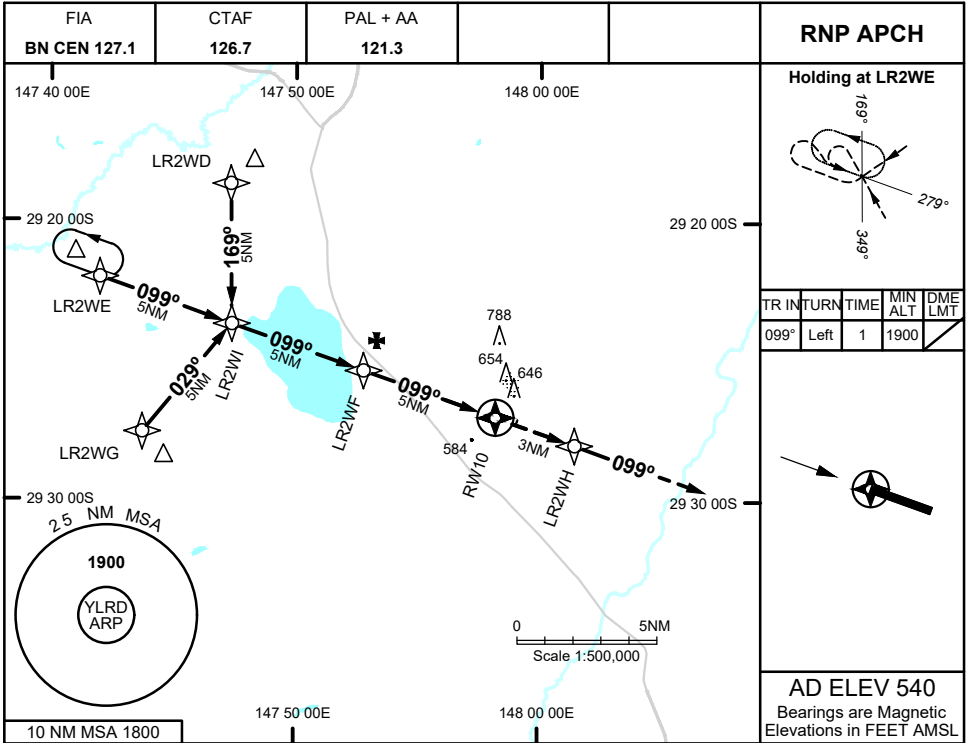
Changes: PAL+AA

LRDGN01-171

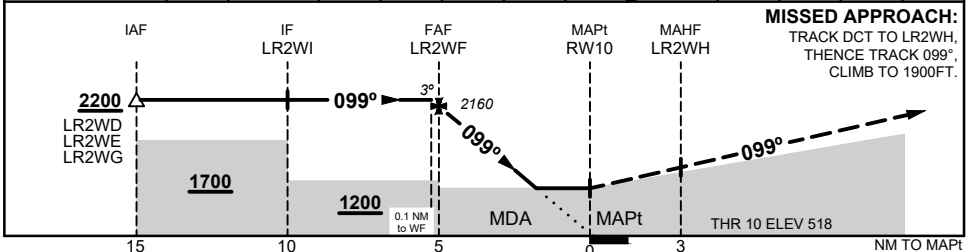


16 JUN 2022

LIGHTNING RIDGE, NSW (YLRD)



NM TO NEXT WPT	0.1	LR2WF	4	3	2.3	2	1.7	RW10			
ALT (3° APCH PATH)	2200	2160	1840	1520	1290	1200	1110				



NOTES

1. MAX IAS:
INITIAL : 210KTS

CATEGORY	A	B	C	D
				NOT APPLICABLE
CIRCLING	1110 (570 - 2.4)		1290 (750 - 4.0)	
ALTERNATE	(1070 - 4.4)		(1250 - 6.0)	

Changes: PAL+AA

LRDGN02-171

