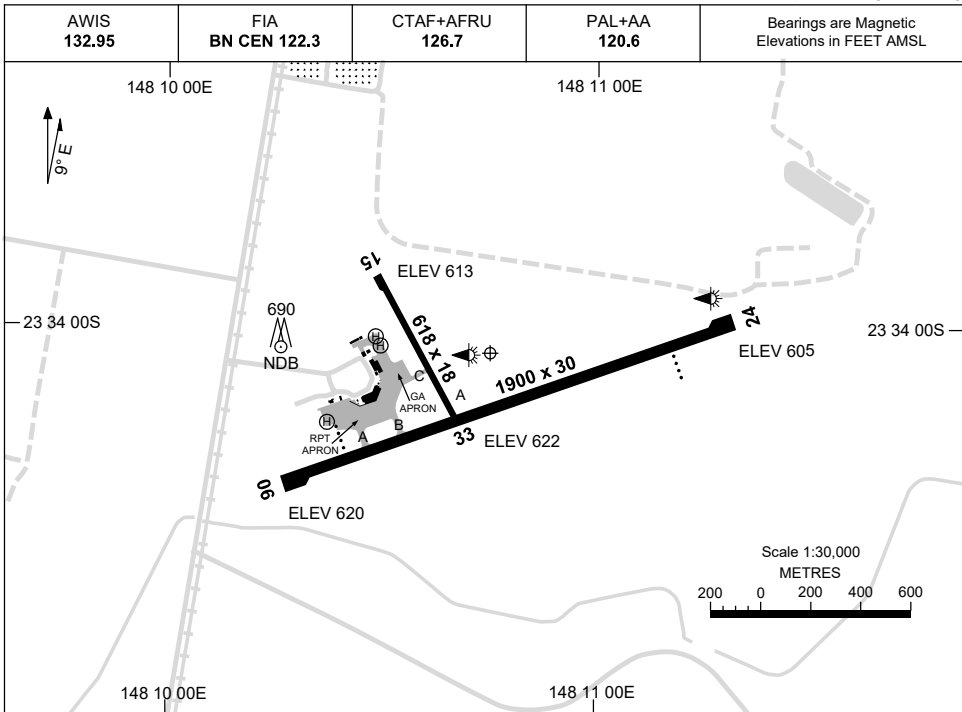


30 NOV 2023

AD ELEV 622  
23 34 04S 148 10 45E

AERODROME CHART  
**EMERALD, QLD (YEML)**



	<b>AERODROME LIGHTING</b>
<b>RWY</b>	RL : PAL+AA 120.6 , SDBY (30 SEC)
<b>06</b> <small>062</small>	PAPI 3.0° 45FT LIRL
<small>242</small> <b>24</b>	PAPI 3.0° 45FT LIRL
<b>15</b> <small>143</small>	NIL
<small>323</small> <b>33</b>	NIL

**NOTES**

1. AWIS ACTIVATED BY 1 SEC TRANSMIT PULSE.

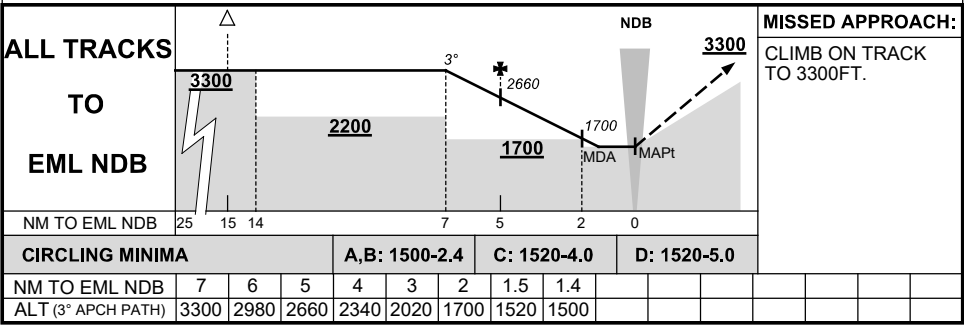
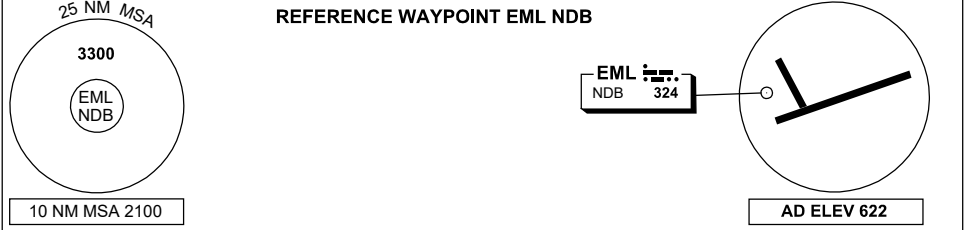
Changes: RWY 15 TURN PAD, PTBL LIGHTING REMOVED.

EMLAD01-177

**GNSS ARRIVAL PROCEDURES  
EMERALD, QLD (YEML)**

**16 JUN 2022**

AWIS 132.95	FIA BN CEN 122.3	CTAF+AFRU 126.7	PAL+AA 120.6		Bearings are Magnetic Elevations in FEET AMSL
----------------	---------------------	--------------------	-----------------	--	--



Changes: PAL+AA.

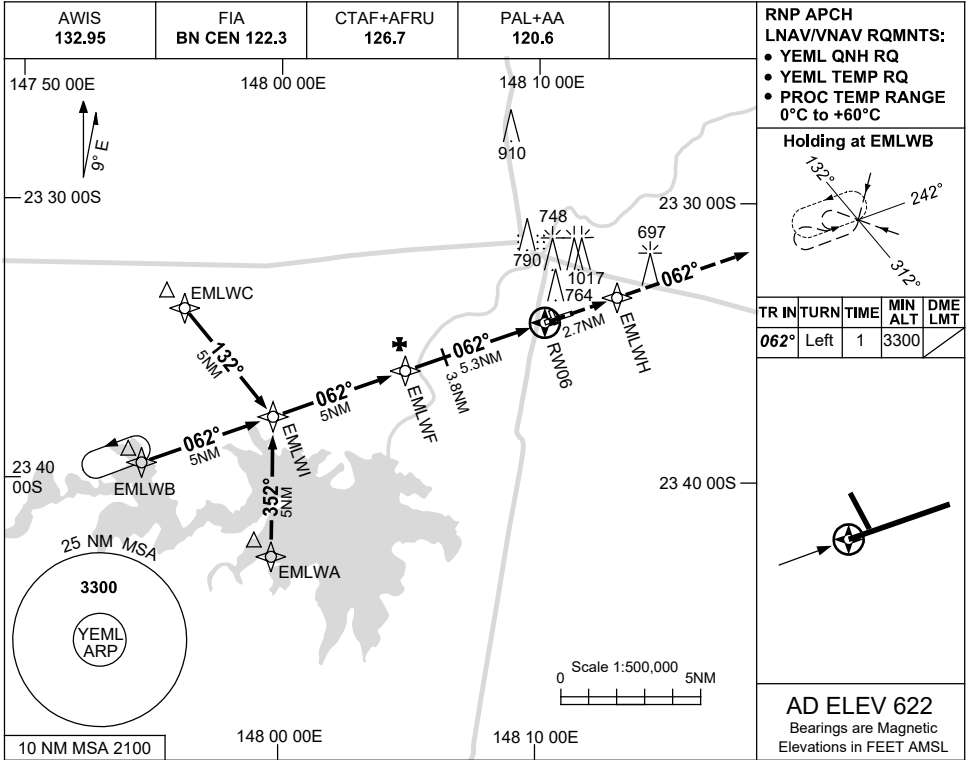


USE QNH

RNP RWY 06

16 JUN 2022

EMERALD, QLD (YEML)



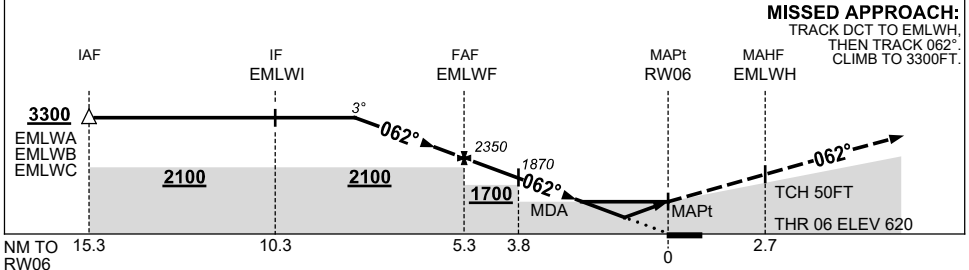
**RNP APCH**  
**LNAV/VNAV RQMTS:**  
 • YEML QNH RQ  
 • YEML TEMP RQ  
 • PROC TEMP RANGE 0°C to +60°C

**Holding at EMLWB**

TR IN	TURN	TIME	MIN ALT	DME LMT
062°	Left	1	3300	

**AD ELEV 622**  
 Bearings are Magnetic  
 Elevations in FEET AMSL

NM TO NEXT WPT	3	2	1	EMLWF	4	3	2	1.6	1	RW06
ALT (3° APCH PATH)	3300	2990	2670	2350	1940	1620	1310	1190	1000	



**MISSED APPROACH:**  
 TRACK DCT TO EMLWH,  
 THEN TRACK 062°,  
 CLIMB TO 3300FT.

MAHF EMLWH

TCH 50FT  
 THR 06 ELEV 620

**NOTES**

- MAX IAS :  
 HOLDING: 210KT.  
 INITIAL : 210KT.

CATEGORY	A	B	C	D
LNAV/VNAV	1000 (380-2.1)			
LNAV	1190 (570-3.2)			
CIRCLING	1420 (798-2.4)	1520 (898-4.0)	1520 (898-5.0)	
ALTERNATE	(1298-4.4)	(1398-6.0)	(1398-7.0)	

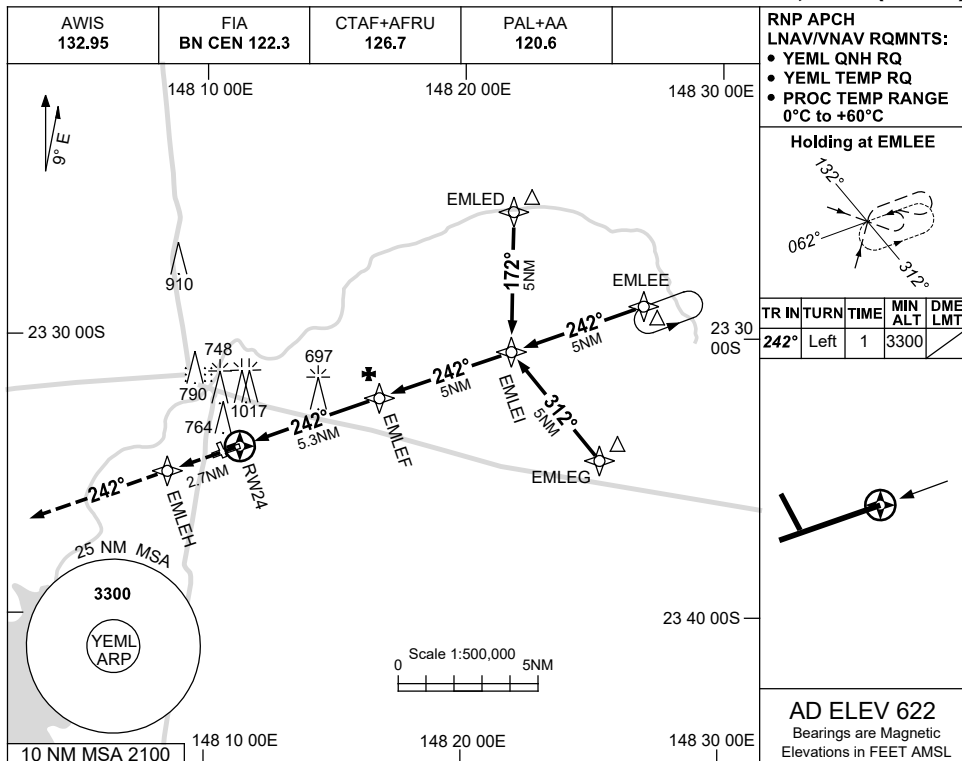
Changes: CHART TITLE, PBN SPECIFICATION BOX, PAL+AA.

EMLGN01-171

USE QNH

RNP RWY 24  
EMERALD, QLD (YEML)

21 MAR 2024

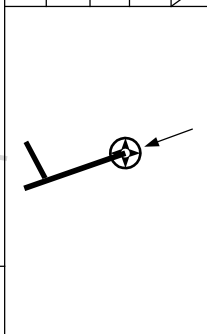


RNP APCH  
LNAV/VNAV RQMNTS:

- YEML QNH RQ
- YEML TEMP RQ
- PROC TEMP RANGE 0°C to +60°C

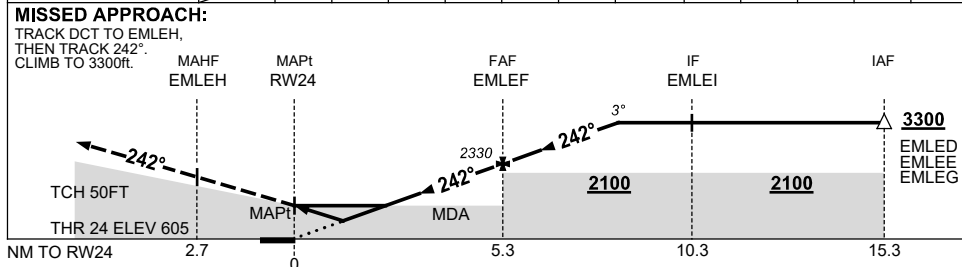
**Holding at EMLEE**

TR	INTURN	TIME	MIN ALT	DME	LMT
242°	Left	1	3300		



**AD ELEV 622**  
Bearings are Magnetic  
Elevations in FEET AMSL

NM TO NEXT WPT	RW24	0.9	1	1.5	2	3	4	EMLEF	1	2	3		
ALT (3° APCH PATH)		940	970	1120	1290	1610	1930	2330	2650	2970	3300		



**NOTES**

CATEGORY	A	B	C	D
LNAV/VNAV		940 (335-1.9)		
LNAV		1120 (515-2.9)		
CIRCLING	1420 (798-2.4)		1520 (898-4.0)	1520 (898-5.0)
ALTERNATE	(1298-4.4)		(1398-6.0)	(1398-7.0)

1. MAX IAS :  
HOLDING : 210KT.  
INITIAL : 210KT.

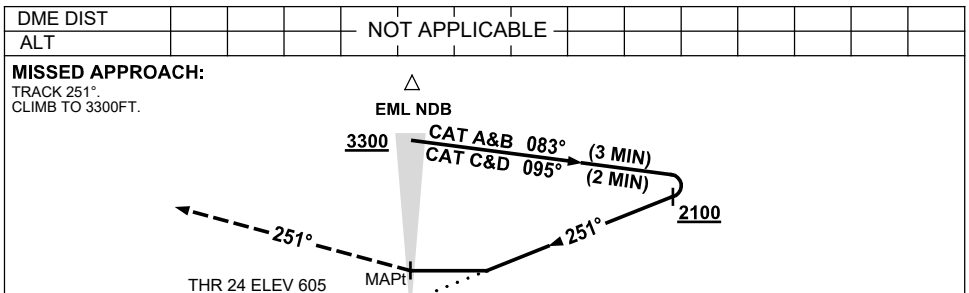
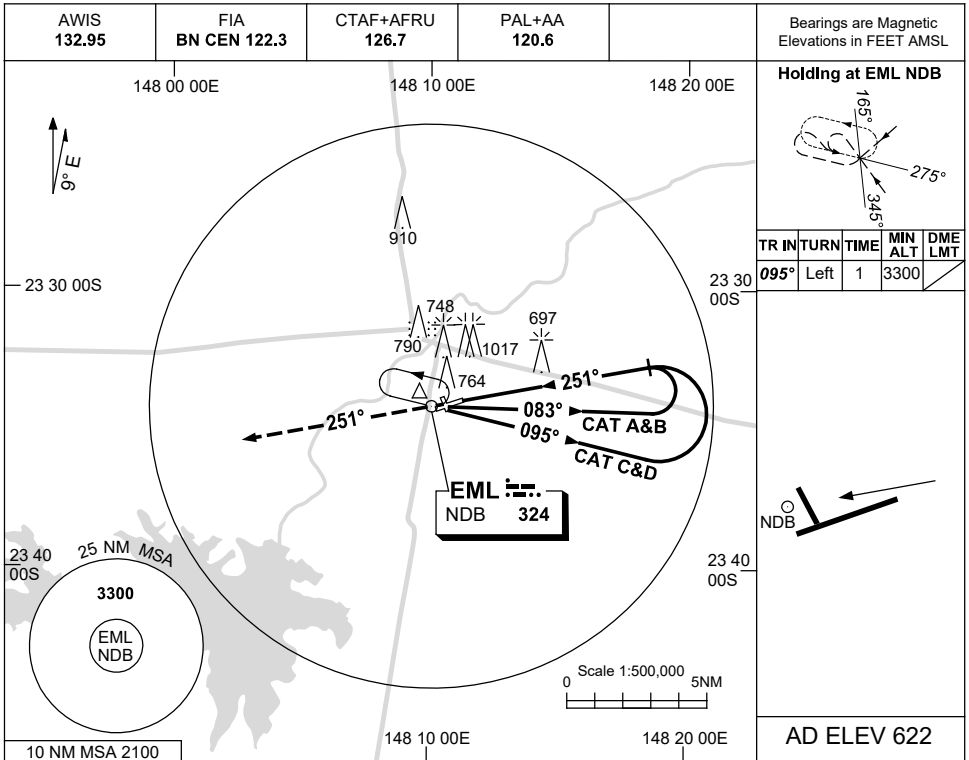
Changes: ALTERNATE VISIBILITY, Editorial.

EMLGN02-178

USE QNH

NDB RWY 24  
**EMERALD, QLD (YEML)**

16 JUN 2022



**NOTES**

- MAX IAS:  
 INITIAL :  
 CAT C&D 210KT.

CATEGORY	A	B	C	D
S-I NDB	<b>1320 (715-4.1)</b>			
CIRCLING	<b>1420 (798-2.4)</b>	<b>1520 (898-4.0)</b>	<b>1520 (898-5.0)</b>	
ALTERNATE	(1298-4.4)	(1398-6.0)	(1398-7.0)	

Changes: PAL+AA.

EMLNB01-171