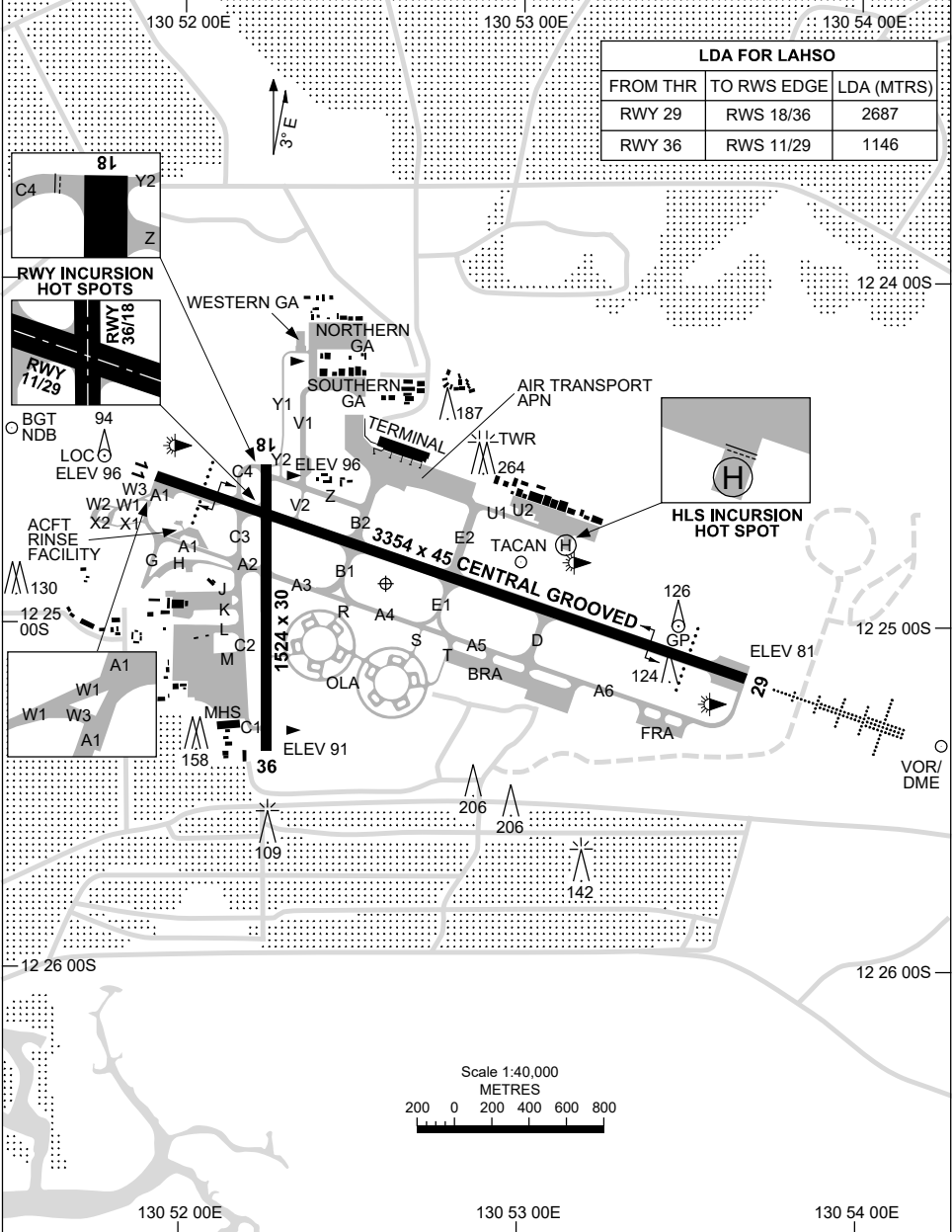


30 NOV 2023

ATIS 128.25 308 316.2	ACD 126.8	SMC 121.8	TWR 133.1	Bearings are Magnetic Elevations in FEET AMSL
-----------------------------	--------------	--------------	--------------	--

LDA FOR LAHSO		
FROM THR	TO RWS EDGE	LDA (MTRS)
RWY 29	RWS 18/36	2687
RWY 36	RWS 11/29	1146



Changes: TWY K AND L ADDED, Editorial.

PDNAD01-177

1 DEC 2022

AD ELEV 103
12 24 53S 130 52 36E

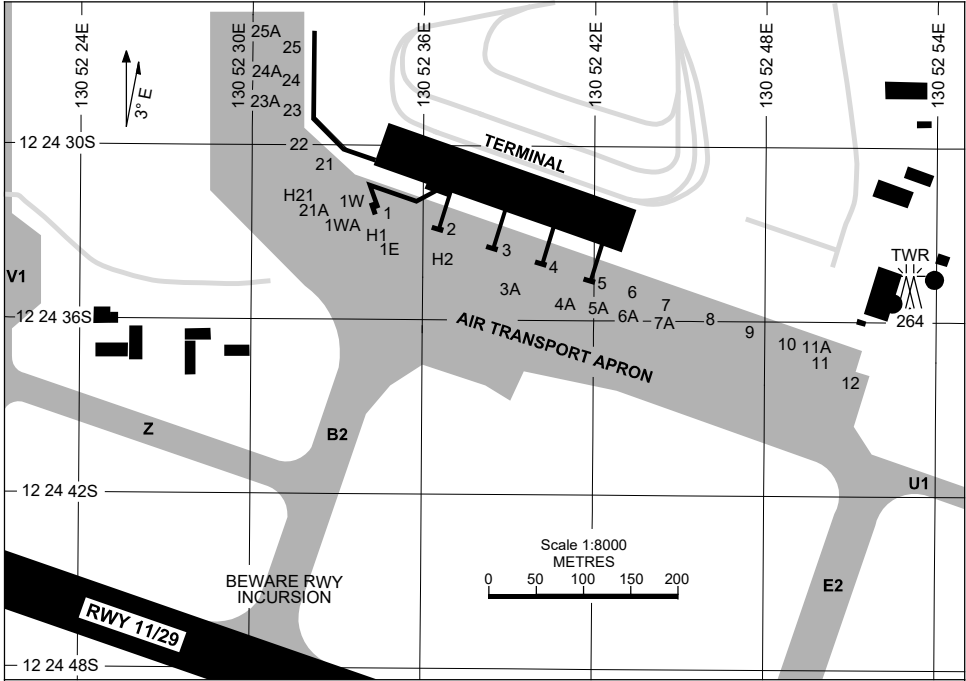
AERODROME CHART - Page 2
DARWIN, NT (YPDN)

ATIS 128.25 308 316.2	ACD 126.8	SMC 121.8	TWR 133.1		Bearings are Magnetic Elevations in FEET AMSL
RWY	AERODROME LIGHTING				
	TAXIWAY : GREEN CENTRELINE EXC C4, V2, Y & Z, W OF TWY V ; RGL RL : MAN , SDBY (15 SEC, 1 SEC DURING LOW VIS PROCEDURES)				
11 ¹⁰⁶ 286 29	PAPI 3.0° 57FT HIRL RCLM PAPI 3.0° 59FT HIRL HIAL-CAT 1 RCLM				
18 ¹⁷⁷ 357 36	NIL NIL				
NOTES					

Changes: NOTES DELETED.

PDNAD02-173

7 SEP 2023



PARKING POSITION INFORMATION

STAND	CO-ORDINATES		ELEV (ft)	CAPACITY	HYDRANT FUEL	DOCKING SYSTEM
1	12 24 29.85S	130 52 34.59E	73	A380/A124	JET A1	SAFEGATE
1E	12 24 30.34S	130 52 34.46E	73	A321	JET A1	
1W	12 24 30.26S	130 52 33.44E	73	A321/B738	JET A1	
1WA	12 24 30.60S	130 52 32.88E	74	DH8C	JET A1	
2	12 24 30.88S	130 52 36.77E	73	B744	JET A1	CIMC
3	12 24 31.58S	130 52 38.75E	72	B763	JET A1	SAFEGATE
3A	12 24 32.24S	130 52 38.67E	72	B752	JET A1	
4	12 24 32.16S	130 52 40.48E	72	A321/B738	JET A1	SAFEGATE
4A	12 24 32.82S	130 52 40.25E	72	SF34/E120	JET A1	
5	12 24 32.61S	130 52 42.02E	72	A321/B738	JET A1	SAFEGATE
5A	12 24 33.16S	130 52 41.85E	72	E120	JET A1	
6	12 24 32.96S	130 52 43.41E	72	A320/B738	JET A1	
6A	12 24 33.32S	130 52 43.12E	72	E120	NIL	
7	12 24 33.35S	130 52 44.77E	72	A320/B738	JET A1	
7A	12 24 33.78S	130 52 44.49E	72	SF34/E120	JET A1	
8	12 24 33.79S	130 52 46.00E	72	B717	JET A1	
9	12 24 34.24S	130 52 47.35E	72	A320/B738	NIL	
10	12 24 34.70S	130 52 48.69E	72	A320/B738	NIL	
11	12 24 35.19S	130 52 49.96E	71	A320/B738	NIL	
11A	12 24 34.62S	130 52 49.35E	71	A330/B789	NIL	
12	12 24 35.52S	130 52 51.06E	70	B738/A320	JET A1	
21	12 24 29.27S	130 52 32.40E	74	B738/A321	JET A1	
21A	12 24 29.89S	130 52 32.15E	74	SF34/E120	JET A1	
22	12 24 28.42S	130 52 31.42E	74	B738/A321	JET A1	
23	12 24 27.08S	130 52 31.12E	73	B738/A321	JET A1	
23A	12 24 30.56S	130 52 26.91E	73	SF34/E120	JET A1	
24	12 24 25.67S	130 52 31.10E	73	B738/A321	JET A1	
24A	12 24 25.47S	130 52 30.55E	73	SF34/E120	JET A1	
25	12 24 24.26S	130 52 31.10E	72	B738/A321	JET A1	
25A	12 24 24.00S	130 52 30.54E	72	SF34/E120	JET A1	
H1	12 24 30.97S	130 52 34.20E	72	S61/S92	NIL	
H2	12 24 31.68S	130 52 36.32E	72	S61/S92	NIL	
H21	12 24 29.72S	130 52 31.58E	74	S61/S92	NIL	

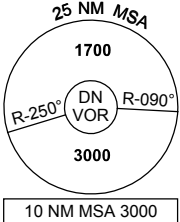
Changes: INTL APN REMOVED, Editorial.



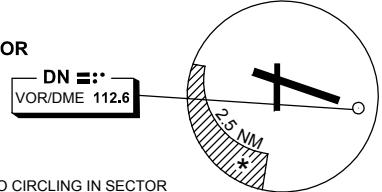
DME or GNSS ARRIVAL PROCEDURES DARWIN, NT (YPDN)

2 MAR 2017

ATIS 128.25 308 316.2	APP-E 125.2 APP-W 134.1	SMC 121.8	TWR 133.1	DEP 123.0	Bearings are Magnetic Elevations in FEET AMSL
------------------------------------	----------------------------	--------------	--------------	--------------	--



DME USING DN DME REFERENCE WAYPOINT DN VOR



AD ELEV 103

SECTOR A

MISSED APPROACH:

CLIMB ON TRACK TO 3000FT OR AS DIRECTED BY ATC.

NM FM VOR	60	50	30	15	12	7	5	3	0					
CIRCLING MINIMA				A,B: 700-2.4		C: 800-4.0		D: 1000-5.0						
NM FM VOR	25	20	15	10	9	8	7	6	5	4	3	2.4	2	
ALT (3° APCH PATH)	8000	6410	4820	3230	2910	2590	2270	1960	1640	1320	1000	800	700	

SECTOR B

MISSED APPROACH:

CLIMB ON TRACK TO 3000FT OR AS DIRECTED BY ATC.

NM FM VOR	60	50	30	15	8	6	5	3	0					
CIRCLING MINIMA				A,B: 700-2.4		C: 800-4.0		D: 1000-5.0						
NM FM VOR	23.7	20	15	10	9	8	7	6	5	4	3	2	1.7	1.1
ALT (3° APCH PATH)	8000	6820	5230	3640	3320	3000	2680	2360	2050	1730	1410	1090	1000	800

SECTOR C

MISSED APPROACH:

CLIMB ON TRACK TO 3000FT OR AS DIRECTED BY ATC.

NM FM VOR	60	50	30	15	7	5	0							
CIRCLING MINIMA				A,B: 850-2.4		C: 850-4.0		D: 1000-5.0						
NM FM VOR	21.9	20	15	10	9	8	7	6	5	4	3	2	1	0.3
ALT(3.16° APCH PATH)	8000	7360	5680	4010	3670	3340	3000	2660	2330	1990	1660	1320	1000	850

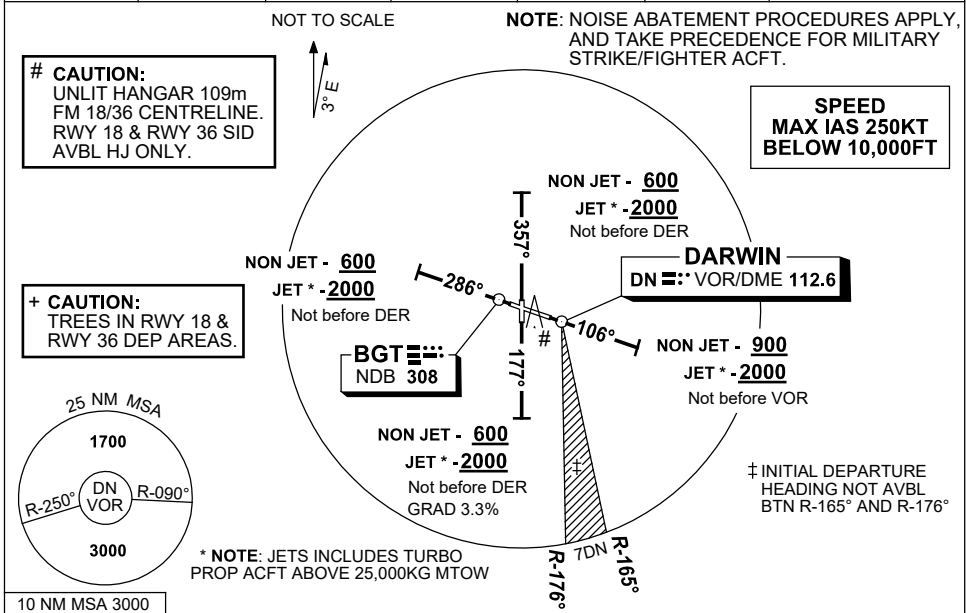
Changes: FROM SUP H159/16.

PDNDG01-150

**STANDARD INSTRUMENT DEPARTURES (SID)
DARWIN SEVEN DEPARTURE (RADAR)
DARWIN, NT (YPDN)**

1 DEC 2022

ATIS 128.25 308 316.2	ACD 126.8	SMC 121.8	TWR 133.1	APP-E 125.2 APP-W 134.1	DEP 123.0	Bearings are Magnetic Elevations in FEET AMSL
------------------------------------	---------------------	---------------------	---------------------	--	---------------------	--



DARWIN SEVEN DEPARTURE (RADAR)

RWY 11

- Track 106°
- AT or ABV 900ft (**2000ft JET ACFT ***) but not before VOR, turn to assigned heading or track
- When instructed, contact Approach for Radar Vectors

RWY 18 (HJ ONLY)

- # TAKEOFF MINIMA REQUIREMENTS
CEILING 50ft VIS 1000m
or
**AIP ENR 1.5 Para 4.3
WHICHEVER IS GREATER**
- Track 177°
 - AT or ABV 600ft (**2000ft JET ACFT ***) but not before DER, turn to assigned heading or track
 - When instructed, contact Approach for Radar Vectors

RWY 29

- Track 286°
- AT or ABV 600ft (**2000ft JET ACFT ***) but not before DER, turn to assigned heading or track
- When instructed, contact Approach for Radar Vectors

RWY 36 (HJ ONLY)

- # TAKEOFF MINIMA REQUIREMENTS
CEILING 50ft VIS 700m
or
**AIP ENR 1.5 Para 4.3
WHICHEVER IS GREATER**
- Track 357°
 - AT or ABV 600ft (**2000ft JET ACFT ***) but not before DER, turn to assigned heading or track
 - When instructed, contact Approach for Radar Vectors

COMMUNICATIONS FAILURE PROCEDURE

- On recognition of communication failure
- Squawk 7600
 - Maintain last assigned vector for two minutes, and
 - CLIMB IF NECESSARY TO MINIMUM SAFE ALTITUDE, to maintain terrain clearance, then
 - proceed in accordance with the latest ATC route clearance acknowledged.

Changes: MAG VAR.

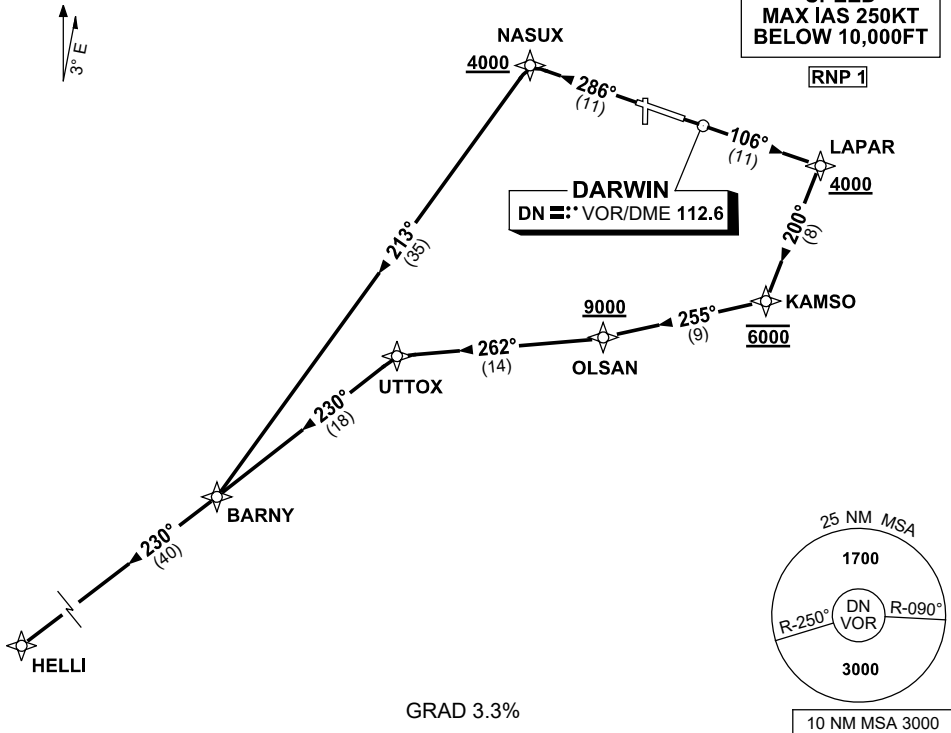
PDNDP01-173

STANDARD INSTRUMENT DEPARTURES (SID)
HELLI FIVE DEPARTURE (JET) (RNAV)
DARWIN, NT (YPDN)

1 DEC 2022

ATIS 128.25 308 316.2	ACD 126.8	SMC 121.8	TWR 133.1	APP-E 125.2 APP-W 134.1	Bearings are Magnetic Elevations in FEET AMSL
-----------------------------	--------------	--------------	--------------	----------------------------	--

NOT TO SCALE



HELLI FIVE DEPARTURE

RWY 11

- Track 106° to LAPAR
Cross LAPAR AT or ABV 4000ft
- Turn RIGHT, track 200° to KAMSO
Cross KAMSO AT 6000ft
- Turn RIGHT, track 255° to OLSAN
Cross OLSAN AT or ABV 9000ft
- Turn RIGHT, track 262° to UTTOX
- Turn LEFT, track 230° to BARNY
- Track 230° to HELLI

RWY 29

- Track 286° to NASUX
Cross NASUX AT or ABV 4000ft
- Turn LEFT, track 213° to BARNY
- Turn RIGHT, track 230° to HELLI

Changes: MAG VAR.

PDNDP03-173

STANDARD INSTRUMENT DEPARTURES (SID)
 JULIE FIVE DEPARTURE (JET) (RNAV)
 DARWIN, NT (YPDN)

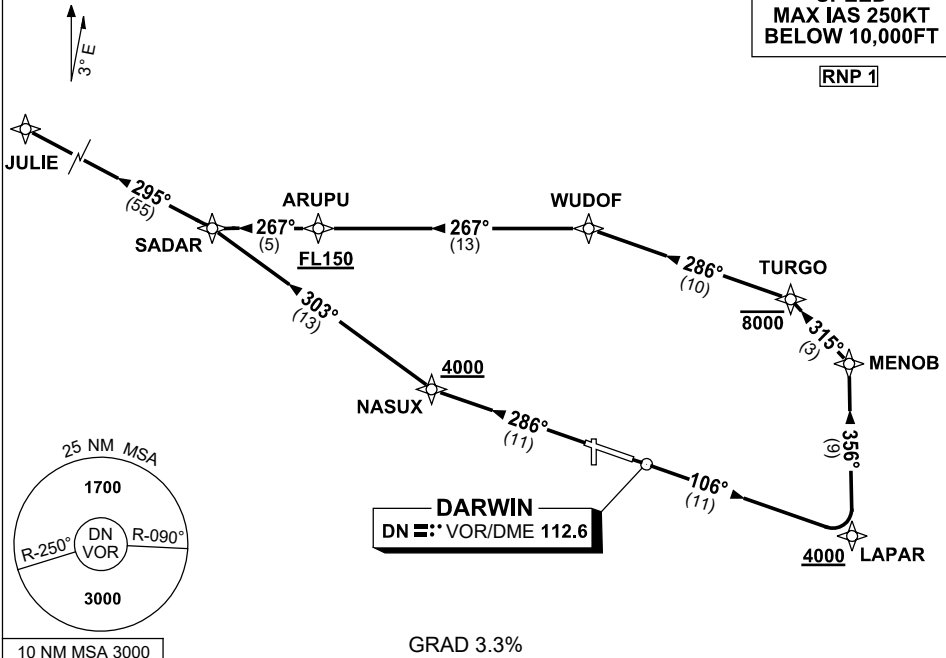
1 DEC 2022

ATIS 128.25 308 316.2	ACD 126.8	SMC 121.8	TWR 133.1	APP-E 125.2 APP-W 134.1	Bearings are Magnetic Elevations in FEET AMSL
-----------------------------	--------------	--------------	--------------	----------------------------	--

NOT TO SCALE

**SPEED
 MAX IAS 250KT
 BELOW 10,000FT**

RNP 1



JULIE FIVE DEPARTURE

RWY 11

- Track 106° to LAPAR
Cross LAPAR AT or ABV 4000ft
- Turn LEFT, track 356° to MENOB
- Turn LEFT, track 315° to TURGO
Cross TURGO AT or BLW 8000ft
- Turn LEFT, track 286° to WUDOF
- Turn LEFT track 267° to ARUPU
Cross ARUPU AT or ABV FL150
- Track 267° to SADAR
- Turn RIGHT, track 295° to JULIE

RWY 29

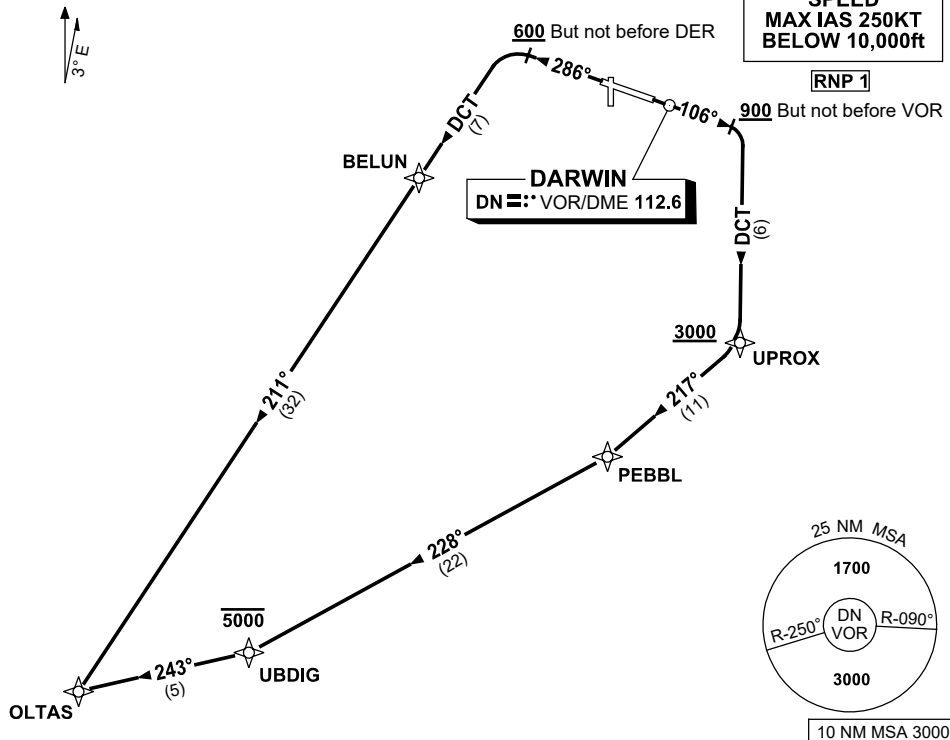
- Track 286° to NASUX
Cross NASUX AT or ABV 4000ft
- Turn RIGHT, track 303° SADAR
- Turn LEFT, track 295° to JULIE

STANDARD INSTRUMENT DEPARTURES (SID)
 OLTAS ONE DEPARTURE (NON-JET) (RNAV)
DARWIN, NT (YPDN)

30 NOV 2023

ATIS 128.25 308 316.2	ACD 126.8	SMC 121.8	TWR 133.1	APP-E 125.2 APP-W 134.1	Bearings are Magnetic Elevations in FEET AMSL
-----------------------------	--------------	--------------	--------------	----------------------------	--

NOT TO SCALE



OLTAS ONE DEPARTURE

RWY 11

- GRAD 8.8% to 3000ft, THENCE 3.3%
- Track 106°
- AT or ABV 900ft, but not before VOR turn RIGHT, track DCT to UPROX
- Cross** UPROX AT or ABV 3000ft
- Turn RIGHT, track 217° to PEBBL
- Turn RIGHT track 228° to UBDIG
- Cross** UBDIG AT or BLW 5000ft
- Turn RIGHT, track 243° to OLTAS

RWY 29

- GRAD 3.3% (GRAD 7% to 3000ft)
- Track 286°
- AT or ABV 600ft, but not before DER, turn LEFT, track DCT to BELUN
- Track 211° to OLTAS

Changes: OLTAS REPLACES BIRDY, CHART TITLE, Editorial.

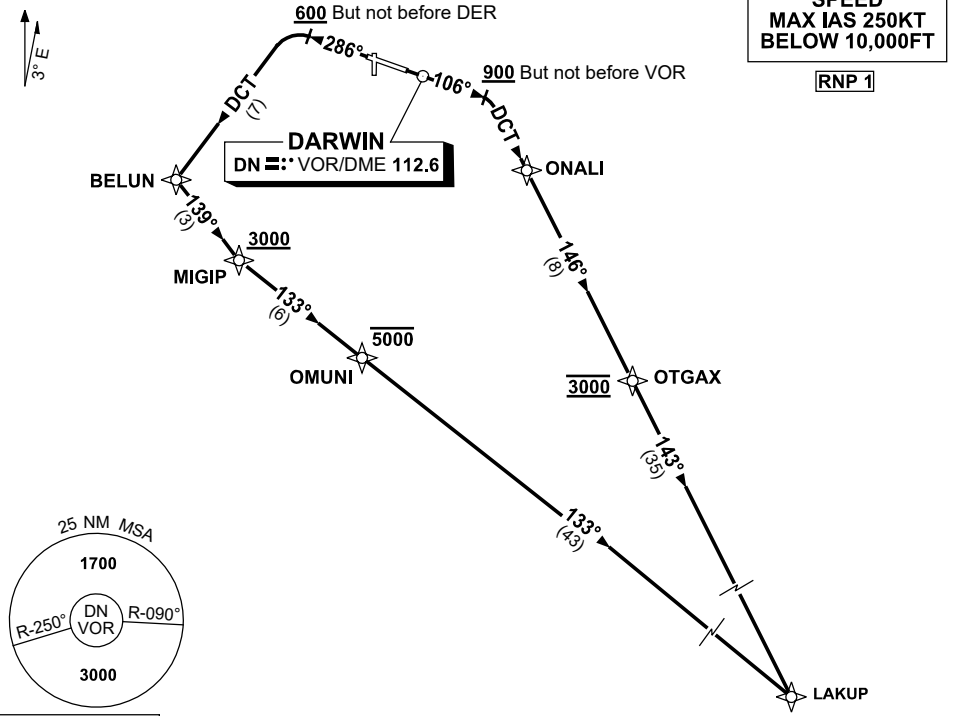
PDNDP05-177

STANDARD INSTRUMENT DEPARTURES (SID)
LAKUP FIVE DEPARTURE (NON-JET) (RNAV)
DARWIN, NT (YPDN)

1 DEC 2022

ATIS 128.25 308 316.2	ACD 126.8	SMC 121.8	TWR 133.1	APP-E 125.2 APP-W 134.1	Bearings are Magnetic Elevations in FEET AMSL
-----------------------------	--------------	--------------	--------------	----------------------------	--

NOT TO SCALE



LAKUP FIVE DEPARTURE

RWY 11

- GRAD 3.3%
- Track 106°
- AT or ABV 900ft, but not before VOR
turn RIGHT, track DCT to ONALI
- Track 146° to OTGAX
Cross OTGAX AT 3000ft
- Track 143° to LAKUP

RWY 29

- GRAD 3.3% (GRAD 7% to 3000ft)
- 286°
- AT or ABV 600ft, but not before DER
turn LEFT, track DCT to BELUN
- Turn LEFT, track 139° to MIGIP
Cross MIGIP AT or ABV 3000ft
- Turn LEFT, track 133° to OMUNI
Cross OMUNI AT or BLW 5000ft
- Track 133° to LAKUP

Changes: MAG VAR.

PDNDP06-173

STANDARD INSTRUMENT DEPARTURES (SID)
 OCTOB EIGHT DEPARTURE (JET) (RNAV)
DARWIN, NT (YPDN)

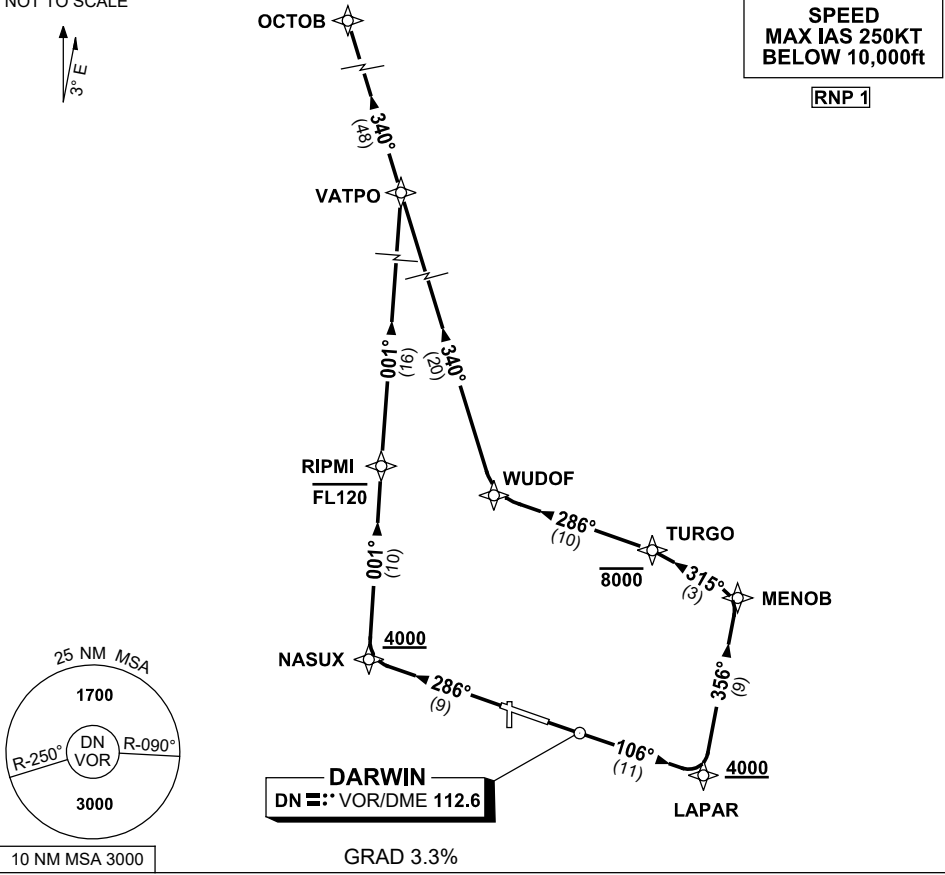
30 NOV 2023

ATIS 128.25 308 316.2	ACD 126.8	SMC 121.8	TWR 133.1	APP-E 125.2 APP-W 134.1	Bearings are Magnetic Elevations in FEET AMSL
-----------------------------	--------------	--------------	--------------	----------------------------	--

NOT TO SCALE



**SPEED
 MAX IAS 250KT
 BELOW 10,000ft**
RNP 1



OCTOB EIGHT DEPARTURE

RWY 11

- Track 106° to LAPAR
Cross LAPAR AT or ABV 4000ft
- Turn LEFT, track 356° to MENOB
- Turn LEFT, track 315° to TURGO
Cross TURGO AT or BLW 8000ft
- Turn LEFT, track 286° to WUDOF
- Turn RIGHT, track 340° to VATPO
- Track 340° to OCTOB

RWY 29

- Track 286° to NASUX
Cross NASUX AT or ABV 4000ft
- Turn RIGHT, track 001° to RIPMI
Cross RIPMI AT or BLW FL120
- Track 001° to VATPO
- Turn LEFT track 340° to OCTOB

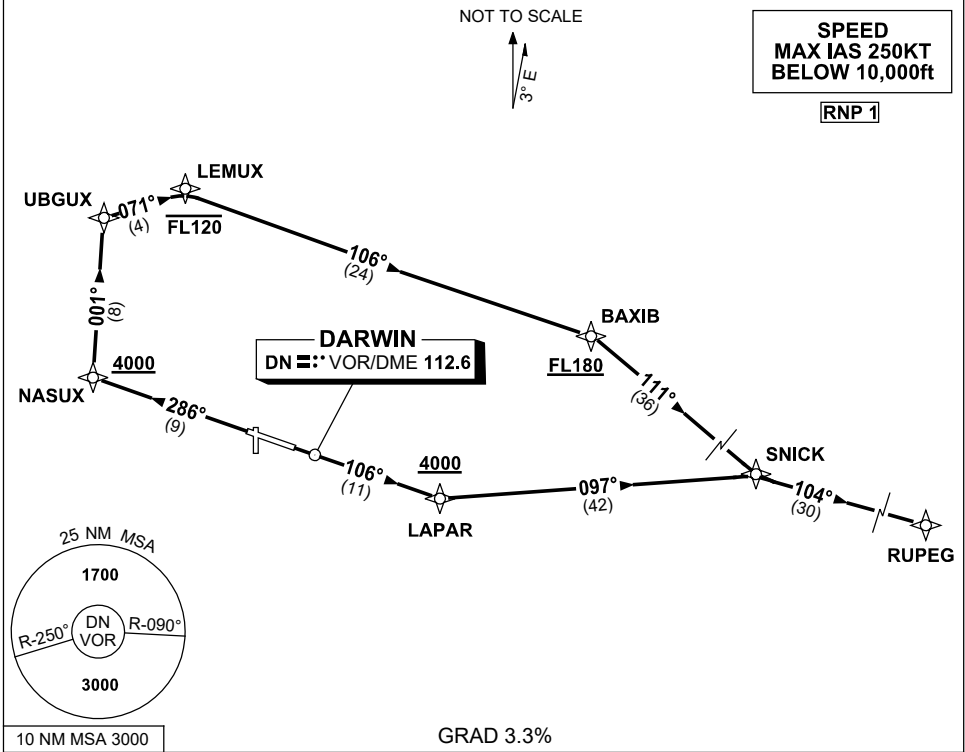
Changes: RIPMI REPLACES PORKY, VATPO REPLACES TUMBL, VALIDITY NUMBER, Editorial.



STANDARD INSTRUMENT DEPARTURES (SID)
 RUPEG ONE DEPARTURE (JET) (RNAV)
DARWIN, NT (YPDN)

30 NOV 2023

ATIS 128.25 308 316.2	ACD 126.8	SMC 121.8	TWR 133.1	APP-E 125.2 APP-W 134.1	Bearings are Magnetic Elevations in FEET AMSL
-----------------------------	--------------	--------------	--------------	----------------------------	--



RUPEG ONE DEPARTURE

RWY 11

- Track 106° to LAPAR
Cross LAPAR AT or ABV 4000ft
- Turn LEFT, track 097° to SNICK
- Turn RIGHT, track 104° to RUPEG

RWY 29

- Track 286° to NASUX
Cross NASUX AT or ABV 4000ft
- Turn RIGHT, track 001° to UBGUX
- Turn RIGHT, track 071° to LEMUX
Cross LEMUX AT or BLW FL120
- Turn RIGHT, track 106° to BAXIB
Cross BAXIB AT or ABV FL180
- Turn RIGHT, track 111° to SNICK
- Turn LEFT, track 104° to RUPEG

Changes: RUPEG REPLACES PALGA, CHART TITLE, Editorial.

PDNDP08-177

STANDARD INSTRUMENT DEPARTURES (SID)
 RUSKA SIX DEPARTURE (NON-JET) (RNAV)
DARWIN, NT (YPDN)

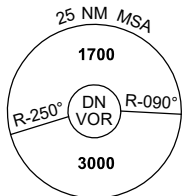
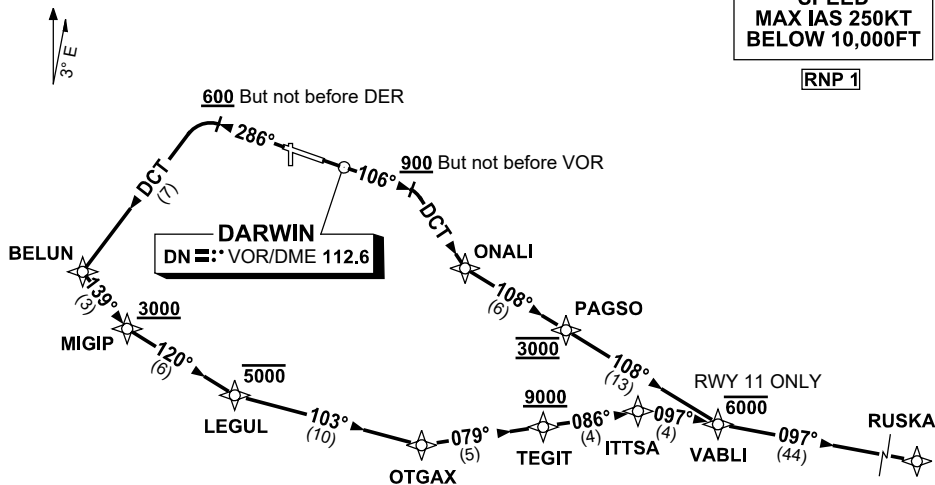
1 DEC 2022

ATIS 128.25 308 316.2	ACD 126.8	SMC 121.8	TWR 133.1	APP-E 125.2 APP-W 134.1	Bearings are Magnetic Elevations in FEET AMSL
-----------------------------	--------------	--------------	--------------	----------------------------	--

NOT TO SCALE

**SPEED
 MAX IAS 250KT
 BELOW 10,000FT**

RNP 1



10 NM MSA 3000

RUSKA SIX DEPARTURE

RWY 11

- GRAD 3.3%
- Track 106°
- AT or ABV 900ft, but not before VOR turn RIGHT, track DCT to ONALI
- Turn LEFT, track 108° to PAGSO
Cross PAGSO AT 3000ft
- Track 108° to VABLI
Cross VABLI AT or BLW 6000ft
- Turn LEFT, track 097° to RUSKA

RWY 29

- GRAD 3.3% (GRAD 7% to 3000ft)
- Track 286°
- AT or ABV 600ft, but not before DER turn LEFT, track DCT to BELUN
- Turn LEFT, track 139° to MIGIP
Cross MIGIP AT or ABV 3000ft
- Turn LEFT, track 120° to LEGUL
Cross LEGUL AT or BLW 5000ft
- Turn LEFT, track 103° to OTGAX
- Turn LEFT, track 079° to TEGIT
Cross TEGIT AT or ABV 9000ft
- Turn RIGHT, track 086° to ITTSA
- Turn RIGHT, track 097° to VABLI
- Track 097° to RUSKA

Changes: MAG VAR.

PDNDP09-173

**STANDARD INSTRUMENT DEPARTURES (SID)
VANDI SIX DEPARTURE (NON-JET) (RNAV)
DARWIN, NT (YPDN)**

1 DEC 2022

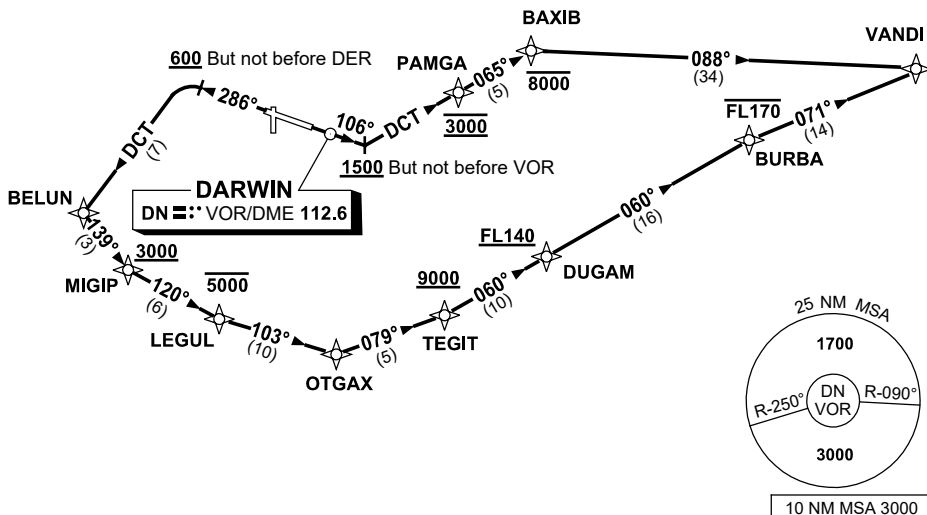
ATIS 128.25 308 316.2	ACD 126.8	SMC 121.8	TWR 133.1	APP-E 125.2 APP-W 134.1	Bearings are Magnetic Elevations in FEET AMSL
-----------------------------	--------------	--------------	--------------	----------------------------	--

NOT TO SCALE



**SPEED
MAX IAS 250KT
BELOW 10,000FT**

RNP 1



VANDI SIX DEPARTURE

RWY 11

- GRAD 3.3%
- Track 106°
- AT or ABV 1500ft, but not before VOR
turn LEFT, track DCT to PAMGA
Cross PAMGA AT 3000ft
- Track 065° to BAXIB
Cross BAXIB AT or BLW 8000ft
- Turn RIGHT, track 088° to VANDI

RWY 29

- GRAD 3.3% (GRAD 7% to 3000ft)
- Track 286°
- AT or ABV 600ft, but not before DER,
turn LEFT track DCT to BELUN
- Turn LEFT, track 139° to MIGIP
Cross MIGIP AT or ABV 3000ft
- Turn LEFT, track 120° to LEGUL
Cross LEGUL AT or BLW 5000ft
- Turn LEFT, track 103° to OTGAX
- Turn LEFT, track 079° to TEGIT
Cross TEGIT AT or ABV 9000ft
- Turn LEFT, track 060° to DUGAM
Cross DUGAM AT or ABV FL140
- Track 060° to BURBA
Cross BURBA AT or BLW FL170
- Turn RIGHT, track 071° to VANDI

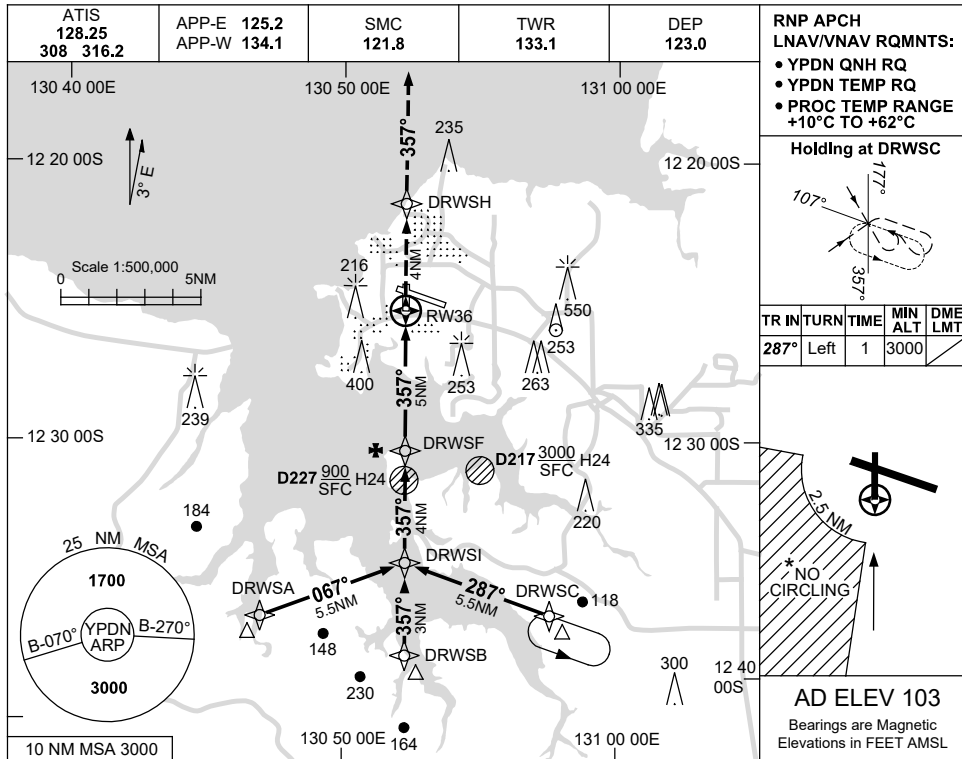
Changes: MAG VAR.

PDNDP10-173

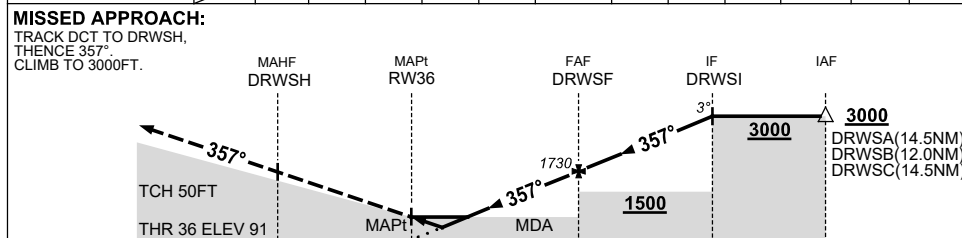
USE QNH

RNP RWY 36
DARWIN, NT (YPDN)

1 DEC 2022



NM TO NEXT WPT	RW36	0.9	1.2	2	3	4	DRWSF	1	2	3	DRWSI		
ALT (3° APCH PATH)		420	520	780	1100	1410	1730	2050	2370	2690	3000		



NOTES

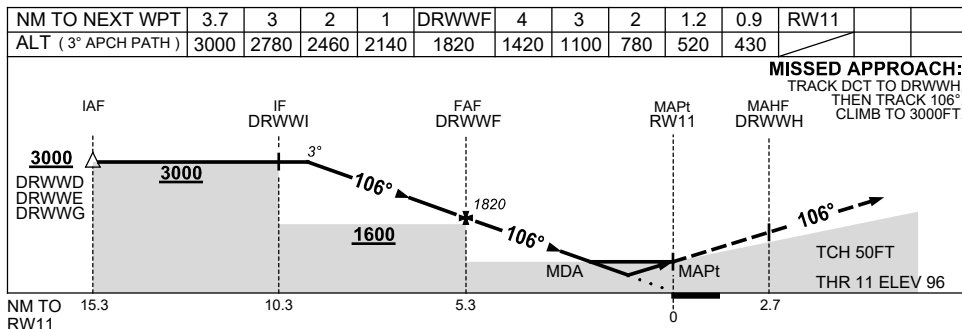
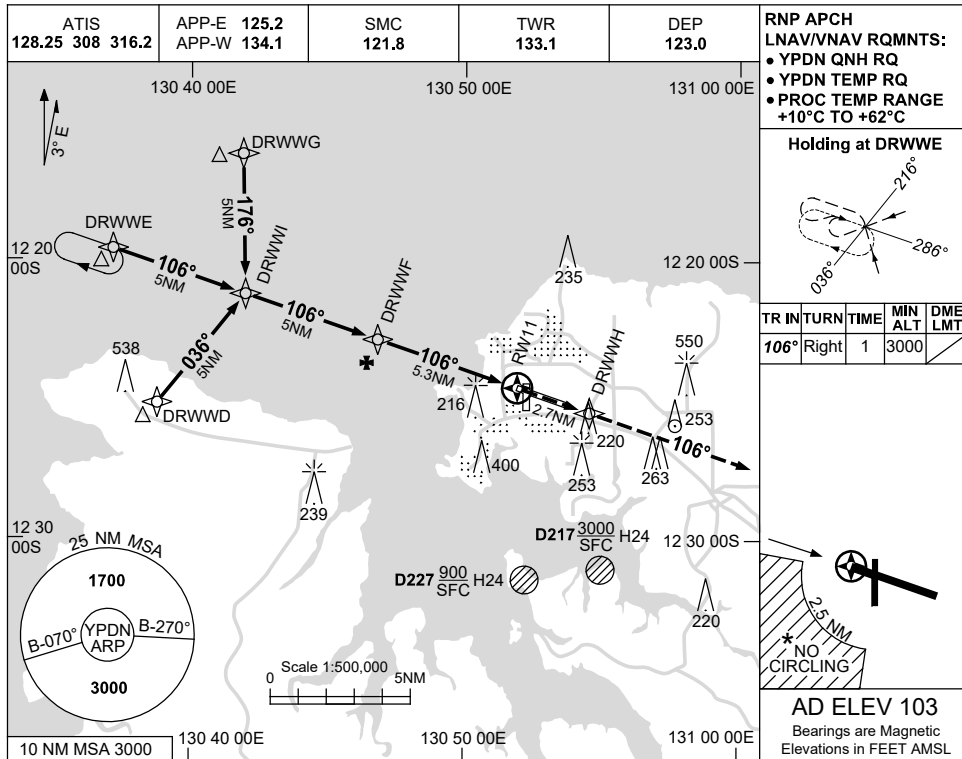
CATEGORY	A	B	C	D
LNAV/VNAV		420 (329-1.8)		NOT APPLICABLE
LNAV		520 (429-2.4)		
CIRCLING *	700 (597-2.4)		800 (697-4.0)	
ALTERNATE	(1097-4.4)		(1197-6.0)	

* 1. NO CIRCLING IN SECTOR SW OF RWY 11/29 AND RWY 18/36 BEYOND 2.5NM.
CAUTION: GAS PLUME APPROACHING FAF.

Changes: MAG VAR.

PDNGN01-173

1 DEC 2022



NOTES

CATEGORY	A	B	C	D
LNAV/VNAV		430	(334-1.9)	
LNAV		520	(417-2.3)	
CIRCLING *	700 (597-2.4)		800 (697-4.0)	1000 (897-5.0)
ALTERNATE	(1097-4.4)		(1197-6.0)	(1397-7.0)

1. MAX IAS:
INITIAL : 210KT.
 * 2. NO CIRCLING IN SECTOR
 SW OF RWY 11/29 AND
 RWY 18/36 BEYOND 2.5NM.

Changes: CHART TITLE, PBN SPECIFICATION BOX.

PDNGN02-173

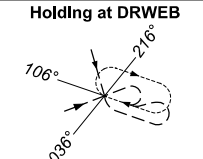
USE QNH

RNP Z RWY 29
DARWIN, NT (YPDN)

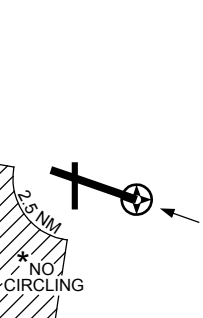
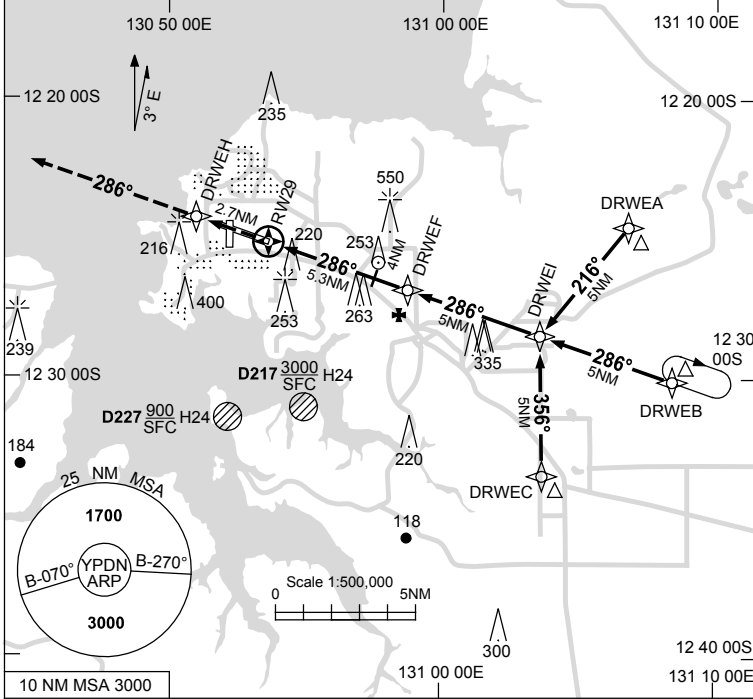
23 MAR 2023

ATIS 128.25 308 316.2	APP-E 125.2 APP-W 134.1	SMC 121.8	TWR 133.1	DEP 123.0
--------------------------	----------------------------	--------------	--------------	--------------

RNP APCH
 LNAV/VNAV RQMNTS:
 • YPDN QNH RQ
 • YPDN TEMP RQ
 • PROC TEMP RANGE
 +10°C TO +62°C

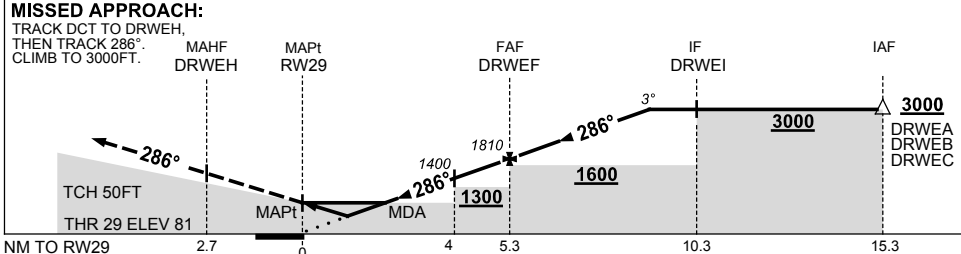


TR IN	TURN	TIME	MIN ALT	DME LMT
286°	Right	1	3000	



AD ELEV 103
 Bearings are Magnetic
 Elevations in FEET AMSL

NM TO NEXT WPT	RW29	1.0	1.3	2	3	4	DRWEF	1	2	3	3.7		
ALT (3° APCH PATH)		460	530	770	1090	1400	1810	2130	2450	2760	3000		



NOTES

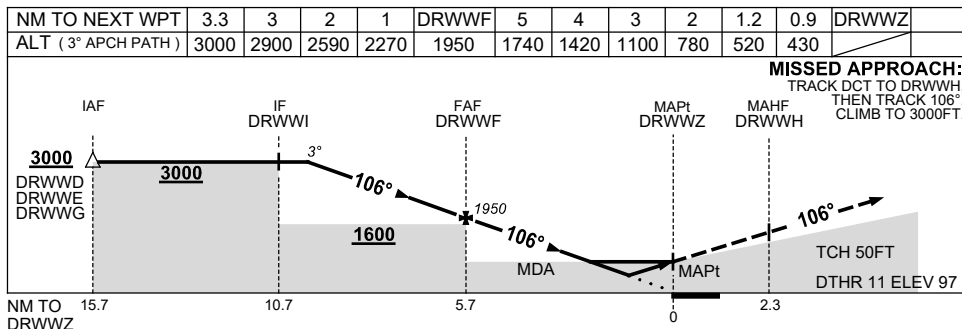
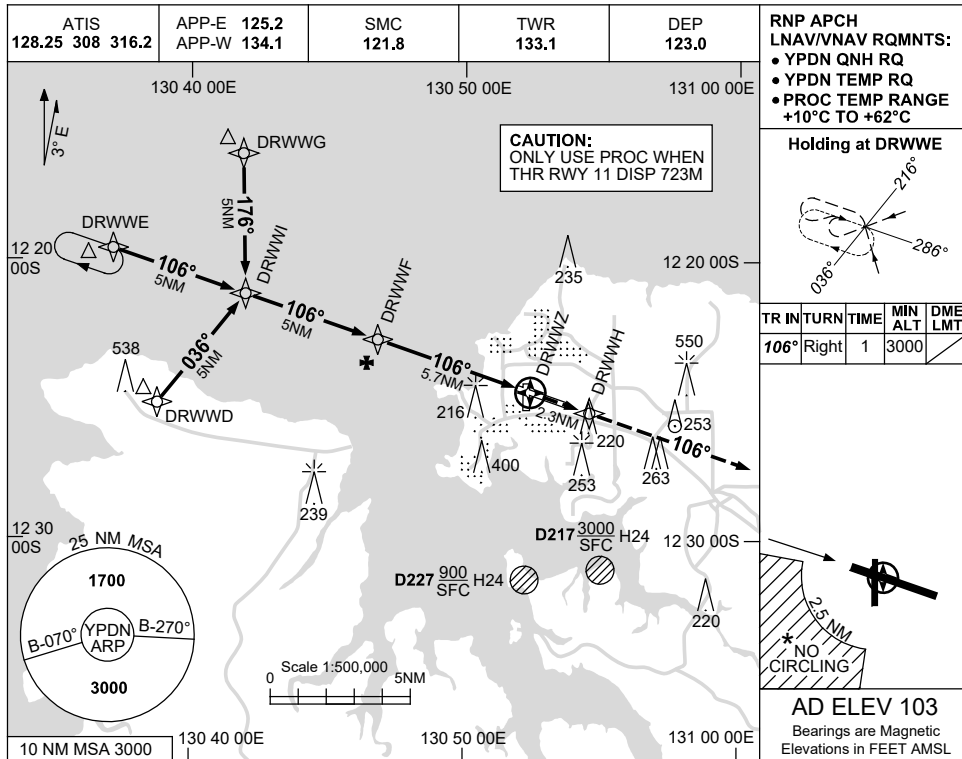
CATEGORY	A	B	C	D
LNAV/VNAV		460 (379-1.2)		
LNAV		530 (449-1.6)		
CIRCLING *	700 (597-2.4)		800 (697-4.0)	1000 (897-5.0)
ALTERNATE	(1097-4.4)		(1197-6.0)	(1397-7.0)

- 1. MAX IAS:
INITIAL : 210KT.
- * 2. NO CIRCLING IN SECTOR SW OF RWY 11/29 AND RWY 18/36 BEYOND 2.5NM.

Changes: VIS MINIMA.

PDNGN03-174

1 DEC 2022



NOTES

CATEGORY	A	B	C	D
LNAV/VNAV		430	(333-1.9)	
LNAV		520	(417-2.3)	
CIRCLING *	700 (597-2.4)		800 (697-4.0)	1000 (897-5.0)
ALTERNATE	(1097-4.4)		(1197-6.0)	(1397-7.0)

1. MAX IAS:
 INITIAL : 210KT.
- * 2. NO CIRCLING IN SECTOR
 SW OF RWY 11/29 AND
 RWY 18/36 BEYOND 2.5NM.

Changes: MAG VAR.

PDNGN10-173

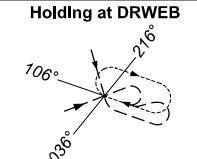
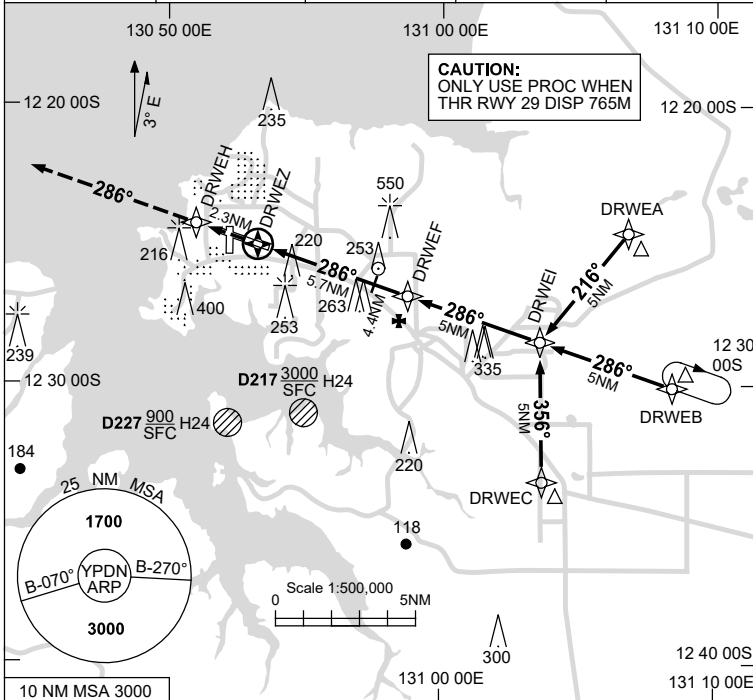
USE QNH

RNP T RWY 29
DARWIN, NT (YPDN)

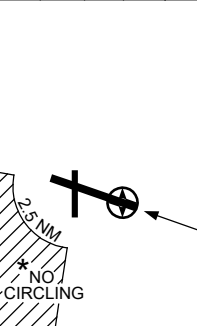
1 DEC 2022

ATIS 128.25 308 316.2	APP-E 125.2 APP-W 134.1	SMC 121.8	TWR 133.1	DEP 123.0
--------------------------	----------------------------	--------------	--------------	--------------

RNP APCH
 LNAV/VNAV RQmnts:
 • YPDN QNH RQ
 • YPDN TEMP RQ
 • PROC TEMP RANGE
 +10°C TO +62°C

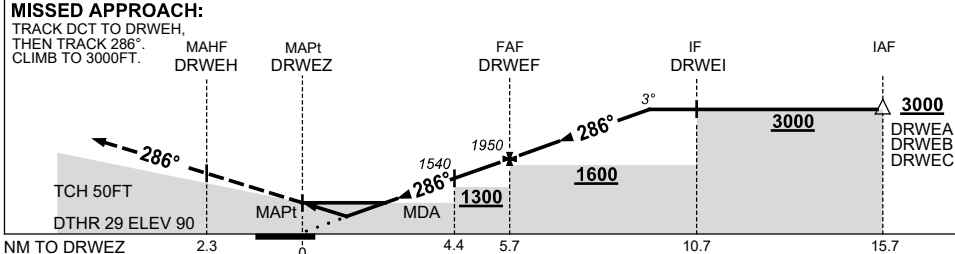


TR IN	TURN	TIME	MIN ALT	DME LMT
286°	Right	1	3000	



AD ELEV 103
 Bearings are Magnetic
 Elevations in FEET AMSL

NM TO NEXT WPT	DRWEZ	1.0	1.2	2	3	4.4	5	DRWEF	1	2	3	3.3
ALT (3° APCH PATH)		460	530	780	1100	1540	1730	1950	2270	2590	2900	3000



NOTES

CATEGORY	A	B	C	D
LNAV/VNAV		460	(370-2.1)	
LNAV		530	(440-2.5)	
CIRCLING *	700 (597-2.4)		800 (697-4.0)	1000 (897-5.0)
ALTERNATE	(1097-4.4)		(1197-6.0)	(1397-7.0)

- MAX IAS: INITIAL : 210KT.
- *2. NO CIRCLING IN SECTOR SW OF RWY 11/29 AND RWY 18/36 BEYOND 2.5NM.

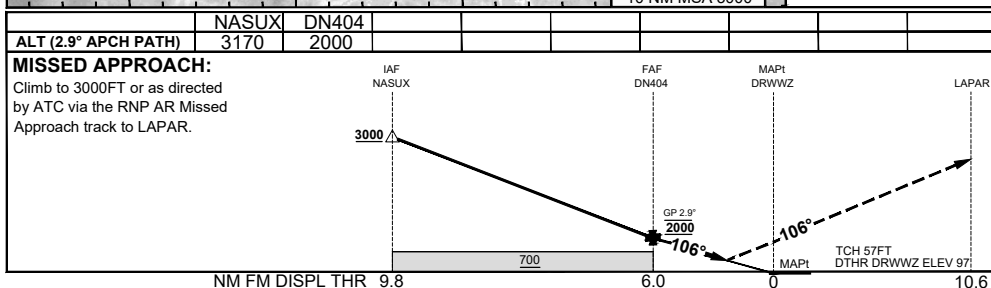
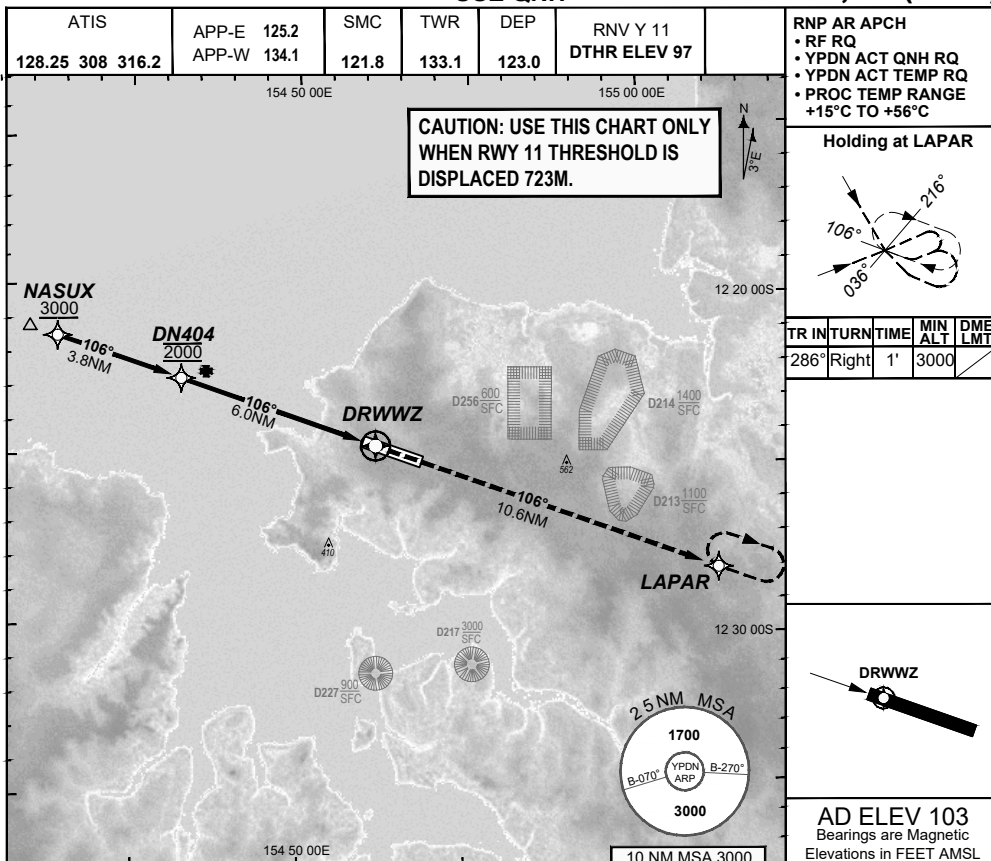
Changes: MAG VAR.

PDNGN11-173

**FOR CASA APPROVED
OPERATORS ONLY
USE QNH**

**RNP Y RWY 11 (AR)
DARWIN, NT (YPDN)**

30 NOV 2023



CATEGORY	A	B	C	D
RNP (0.30)			DA(H) 498 (401 - 2.3)	DA(H) 498 (401 - 2.3)
CIRCLING	N/A		NOT AUTHORISED	NOT AUTHORISED
ALTERNATE				

NOTES

1. PAPI not coincident with VPA.
2. RNP 0.3 RQ FROM NASUX TO DN404.
3. MIN MAP GRAD 4.2% TO 3000FT per ATC.

202307250326 COPYRIGHT © GE DIGITAL, 2023. ALL RIGHTS RESERVED. GE PROPRIETARY INFORMATION

Changes: EDITORIAL

PDNGN12-177

DO NOT USE FOR NAVIGATION

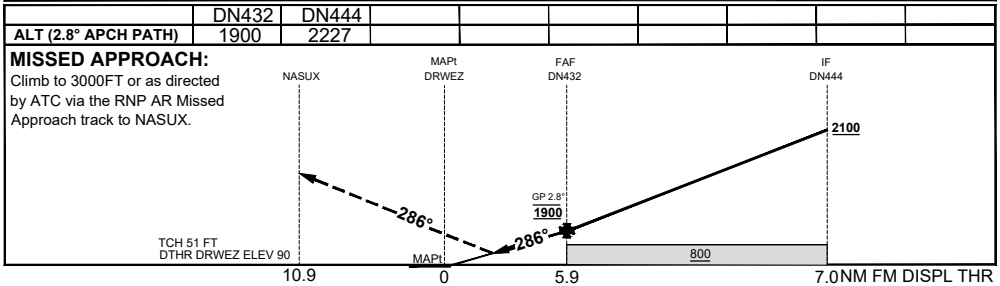
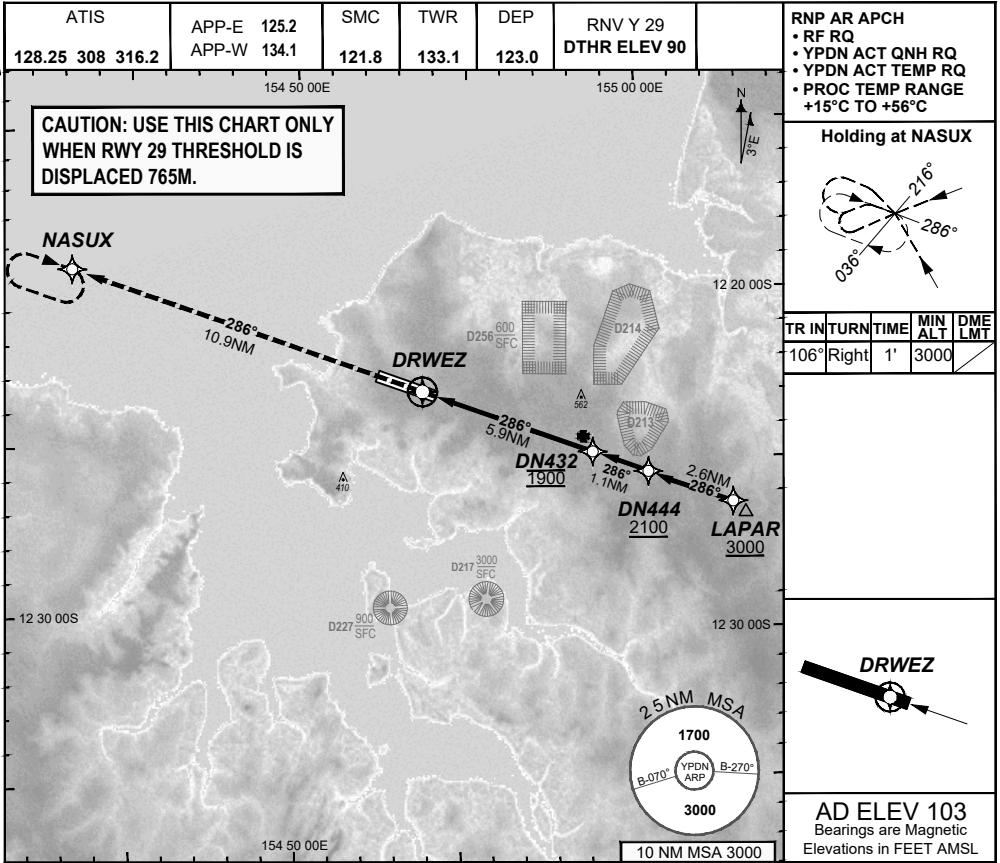
© Airservices Australia 2024 Prepared by GE Aviation - ICAO Doc 9905 Compliant



**FOR CASA APPROVED
OPERATORS ONLY
USE QNH**

**RNP Y RWY 29 (AR)
DARWIN, NT (YPDN)**

30 NOV 2023



CATEGORY	A	B	C	D
RNP (0.30)	N/A		DA(H) 495 (405 - 2.4) 1.5 HIALS	DA(H) 495 (405 - 2.4) 1.5 HIALS
CIRCLING			NOT AUTHORISED	NOT AUTHORISED
ALTERNATE			NOT AUTHORISED	NOT AUTHORISED

- NOTES**
- PAPI not coincident with VPA.
 - RNP 0.3 RQ FROM LAPAR TO DN432.
 - MIN MAP GRAD 4.1% TO 3000FT per ATC.

202307250326 COPYRIGHT © GE DIGITAL, 2023. ALL RIGHTS RESERVED. GE PROPRIETARY INFORMATION

Changes: EDITORIAL

PDNGN13-177

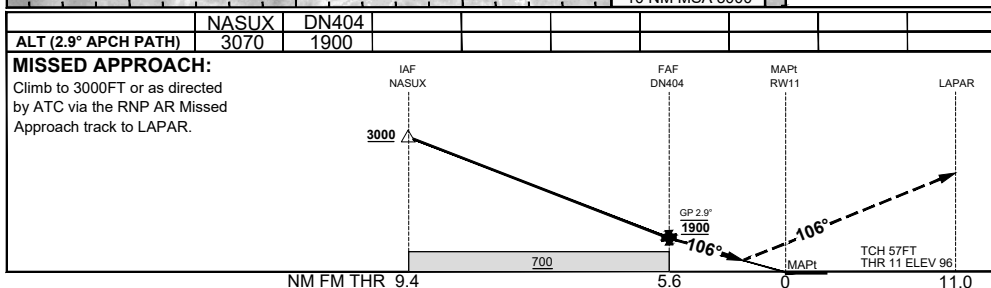
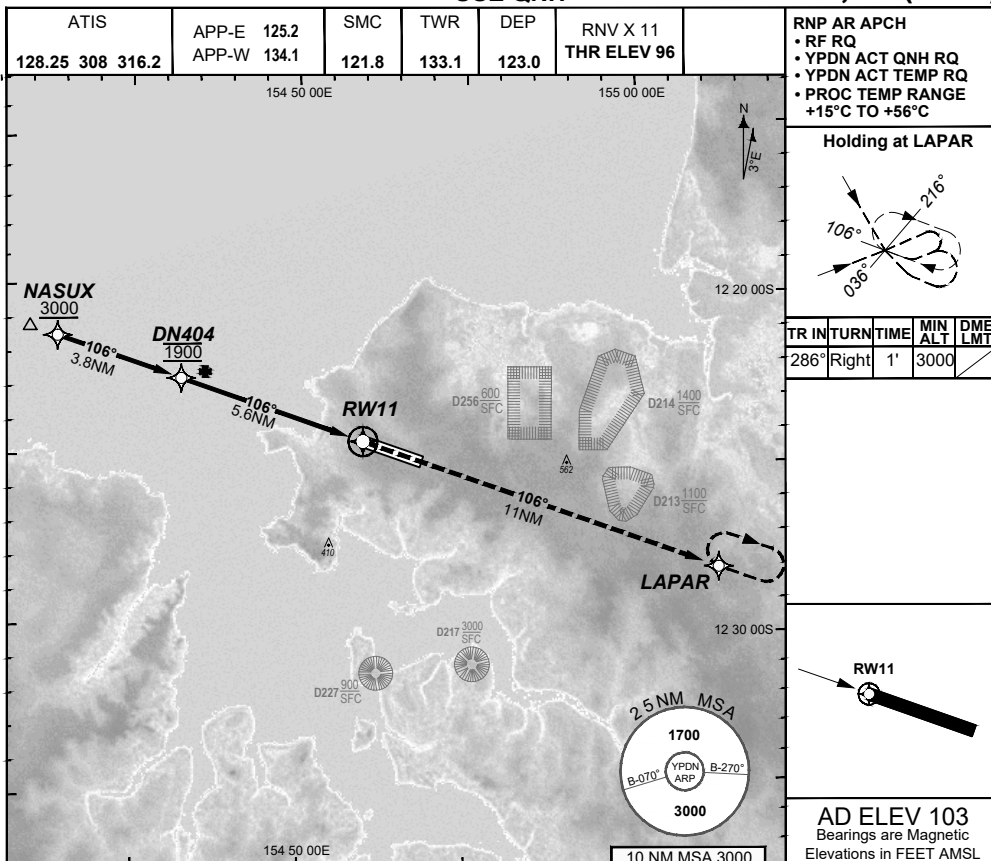
DO NOT USE FOR NAVIGATION



**FOR CASA APPROVED
OPERATORS ONLY
USE QNH**

**RNP X RWY 11 (AR)
DARWIN, NT (YPDN)**

30 NOV 2023



CATEGORY	A	B	C	D
RNP (0.30)	N/A		DA(H) 487 (391 - 2.2)	DA(H) 487 (391 - 2.2)
RNP (0.15)			DA(H) 436 (340 - 1.9)	DA(H) 436 (340 - 1.9)
CIRCLING			NOT AUTHORISED	NOT AUTHORISED
ALTERNATE				

NOTES

1. PAPI not coincident with VPA.
2. RNP 0.3 RQ FROM NASUX TO DN404.
3. MIN MAP GRAD 4.2% TO 3000FT per ATC.

202307250324 COPYRIGHT © GE DIGITAL, 2023. ALL RIGHTS RESERVED. GE PROPRIETARY INFORMATION

Changes: EDITORIAL

PDNGN14-177

DO NOT USE FOR NAVIGATION

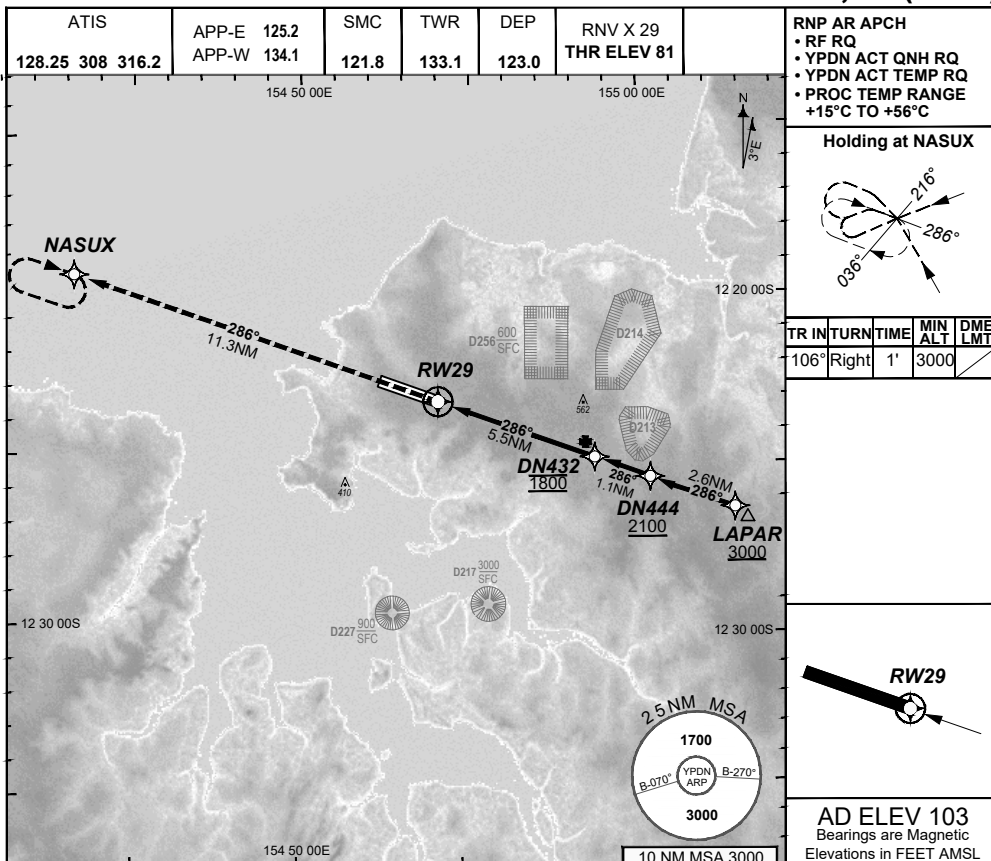
© Airservices Australia 2024 Prepared by GE Aviation - ICAO Doc 9905 Compliant



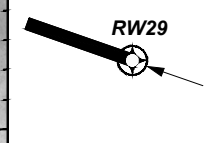
**FOR CASA APPROVED
OPERATORS ONLY
USE QNH**

**RNP X RWY 29 (AR)
DARWIN, NT (YPDN)**

30 NOV 2023

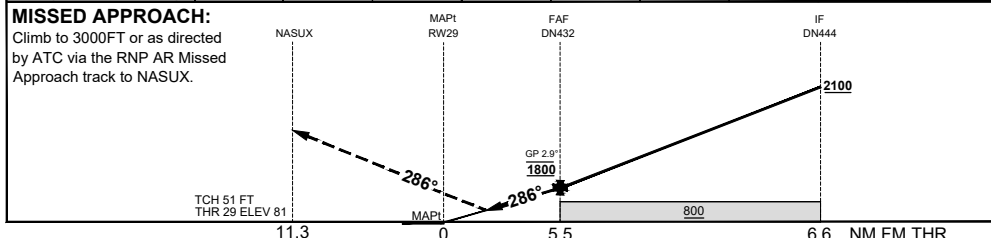


TR IN	TURN	TIME	MIN ALT	DME LMT
106°	Right	1'	3000	



AD ELEV 103
Bearings are Magnetic
Elevations in FEET AMSL

	DN432	DN444					
ALT (2.9° APCH PATH)	1800	2139					



CATEGORY	A	B	C	D
RNP (0.30)	N/A		DA(H) 500 (419 - 2.4) 1.5 HIALS	DA(H) 500 (419 - 2.4) 1.5 HIALS
RNP (0.15)			DA(H) 444 (363 - 2.1) 1.2 HIALS	DA(H) 444 (363 - 2.1) 1.2 HIALS
CIRCLING			NOT AUTHORISED	NOT AUTHORISED
ALTERNATE				

- NOTES**
- PAPI not coincident with VPA.
 - RNP 0.3 RQ FROM LAPAR TO DN432.
 - MIN MAP GRAD 4.1% TO 3000FT per ATC.

202307250325 COPYRIGHT © GE DIGITAL, 2023. ALL RIGHTS RESERVED. GE PROPRIETARY INFORMATION

Changes: EDITORIAL

PDNGN15-177

DO NOT USE FOR NAVIGATION

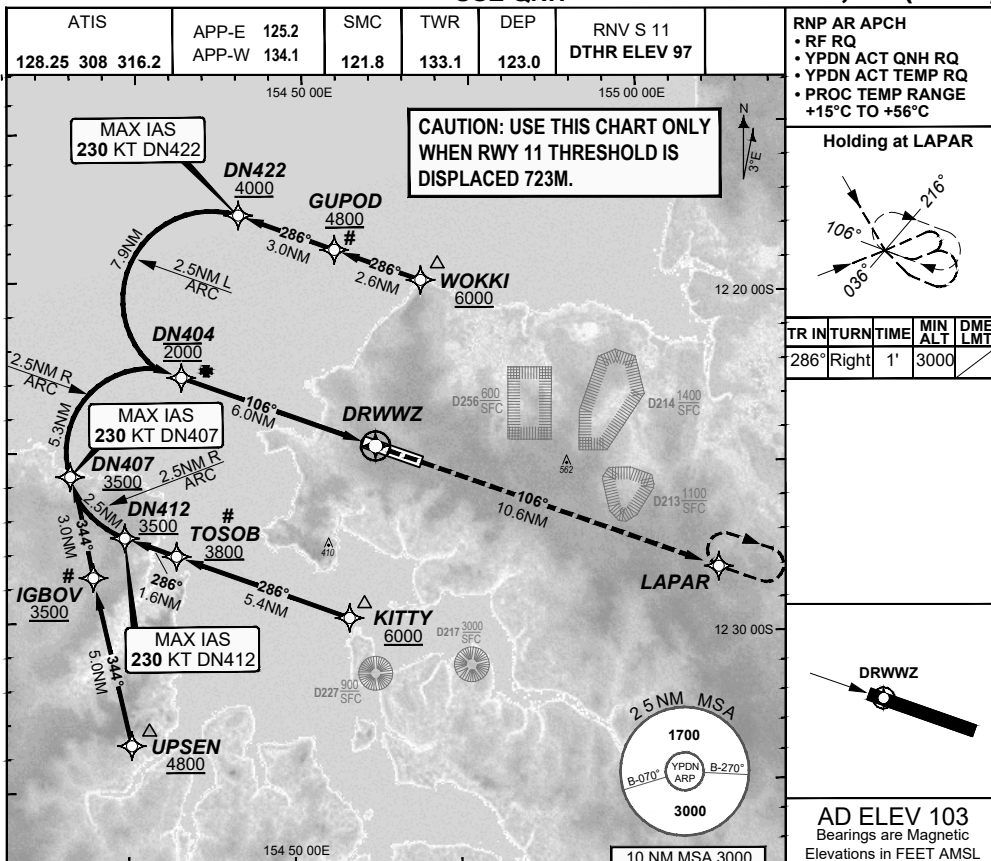
© Airservices Australia 2024 Prepared by GE Aviation - ICAO Doc 9905 Compliant



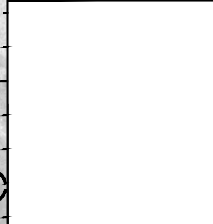
**FOR CASA APPROVED
OPERATORS ONLY
USE QNH**

**RNP S RWY 11 (AR)
DARWIN, NT (YPDN)**

30 NOV 2023



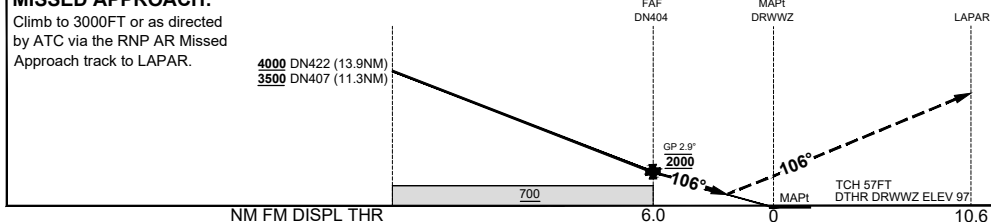
TR IN	TURN	TIME	MIN ALT	DME LMT
286°	Right	1'	3000	



AD ELEV 103
Bearings are Magnetic
Elevations in FEET AMSL

	DN422	DN407	DN404				
--	-------	-------	-------	--	--	--	--

ALT (2.9° APCH PATH)	4432	3631	2000				
-----------------------------	------	------	------	--	--	--	--



CATEGORY	A	B	C	D
RNP (0.30)			DA(H) 498 (401 - 2.3)	DA(H) 498 (401 - 2.3)
CIRCLING		N/A	NOT AUTHORISED	NOT AUTHORISED
ALTERNATE				

- NOTES**
- PAPI not coincident with VPA.
 - RNP 0.3 RQ FROM WOKKI TO DN404.
 - RNP 0.3 RQ FROM UPSEN TO DN404.
 - RNP 0.3 RQ FROM KITTY TO DN404.
 - MIN MAP GRAD 4.2% TO 3000FT per ATC.
 - Latest Intercept Point (LIP)

202307250329 COPYRIGHT © GE DIGITAL, 2023. ALL RIGHTS RESERVED. GE PROPRIETARY INFORMATION

Changes: EDITORIAL

PDNGN16-177

DO NOT USE FOR NAVIGATION

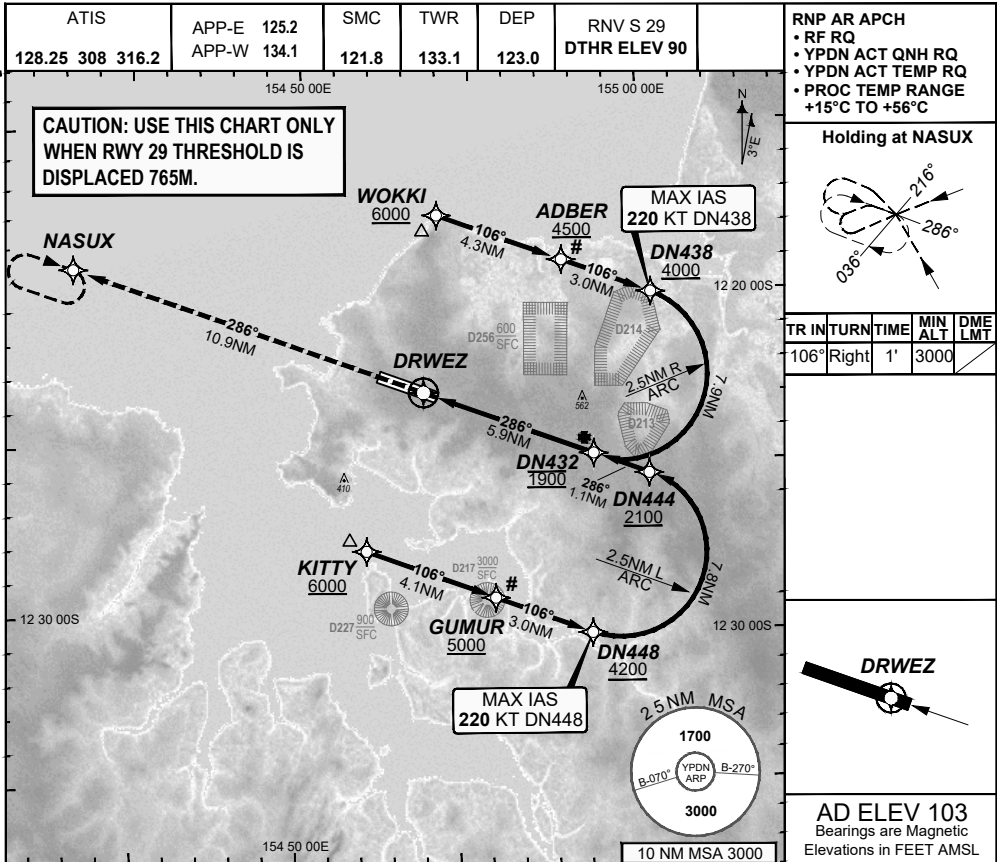
© Airservices Australia 2024 Prepared by GE Aviation - ICAO Doc 9905 Compliant



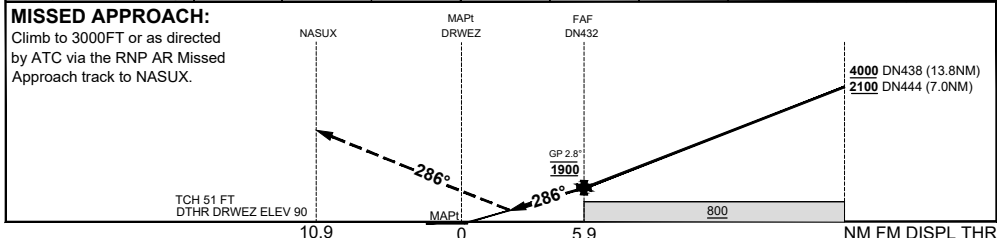
**FOR CASA APPROVED
OPERATORS ONLY
USE QNH**

**RNP S RWY 29 (AR)
DARWIN, NT (YPDN)**

30 NOV 2023



	DN432	DN444	DN438					
ALT (2.8° APCH PATH)	1900	2227	4248					



CATEGORY	A	B	C	D
RNP (0.30)			DA(H) 495 (405 - 2.4) 1.5 HIALS	DA(H) 495 (405 - 2.4) 1.5 HIALS
	N/A		NOT AUTHORISED	NOT AUTHORISED
CIRCLING			NOT AUTHORISED	NOT AUTHORISED
ALTERNATE				

- NOTES**
- PAPI not coincident with VPA.
 - RNP 0.3 RQ FROM WOKKI TO DN432.
 - RNP 0.3 RQ FROM KITTY TO DN432.
 - MIN MAP GRAD 4.1% TO 3000FT per ATC.
 - 5#. Latest Intercept Point (LIP)

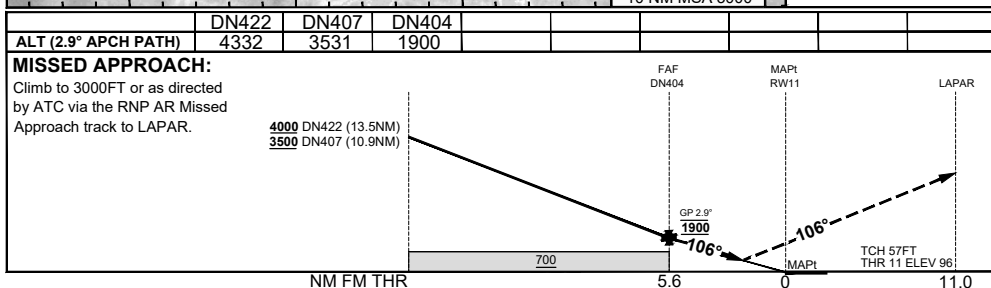
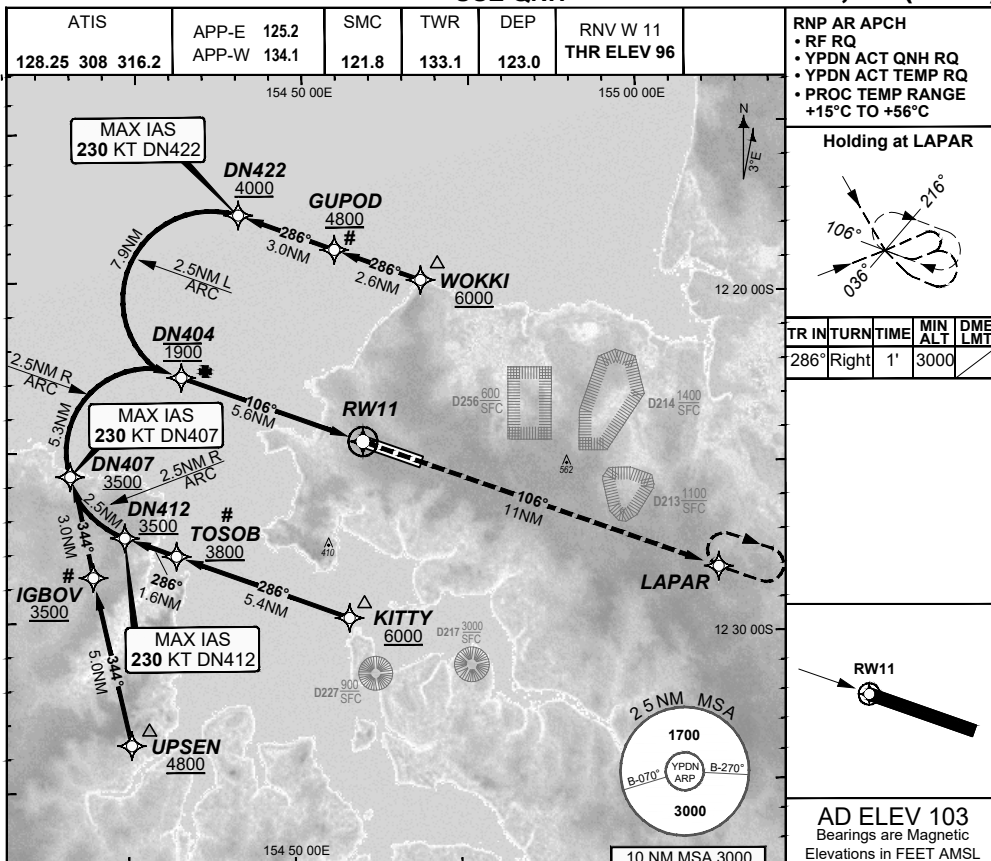
DO NOT USE FOR NAVIGATION



**FOR CASA APPROVED
OPERATORS ONLY
USE QNH**

**RNP W RWY 11 (AR)
DARWIN, NT (YPDN)**

30 NOV 2023



CATEGORY	A	B	C	D
RNP (0.30)	N/A		DA(H) 487 (391 - 2.2)	DA(H) 487 (391 - 2.2)
RNP (0.15)			DA(H) 436 (340 - 1.9)	DA(H) 436 (340 - 1.9)
CIRCLING			NOT AUTHORISED	NOT AUTHORISED
ALTERNATE				

- NOTES**
- PAPI not coincident with VPA.
 - RNP 0.3 RQ FROM WOKKI TO DN404.
 - RNP 0.3 RQ FROM UPSSEN TO DN404.
 - RNP 0.3 RQ FROM KITTY TO DN404.
 - MIN MAP GRAD 4.2% TO 3000FT per ATC.
 - 6#. Latest Intercept Point (LIP)

202307250328 COPYRIGHT © GE DIGITAL, 2023. ALL RIGHTS RESERVED. GE PROPRIETARY INFORMATION

Changes: EDITORIAL

PDNGN18-177

DO NOT USE FOR NAVIGATION

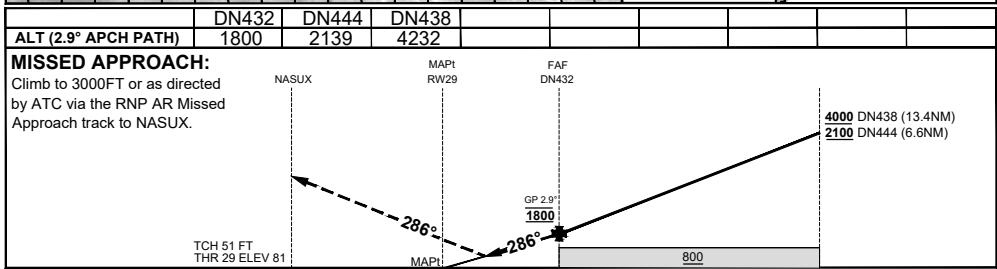
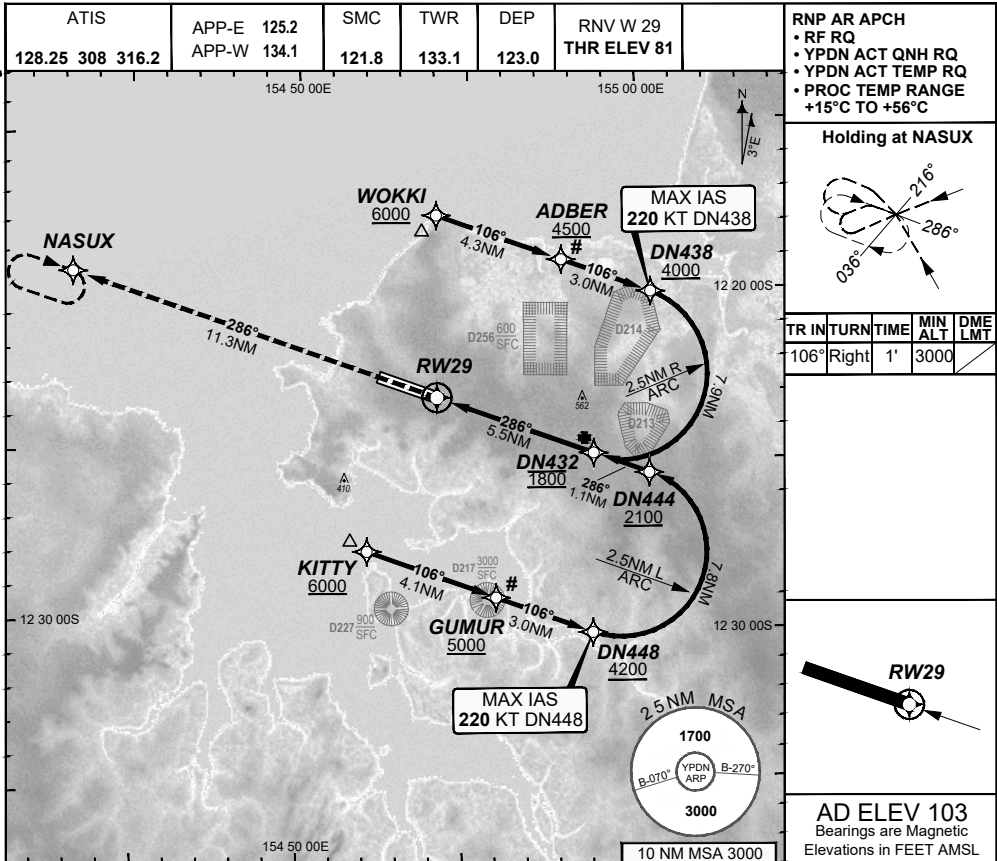
© Airservices Australia 2024 Prepared by GE Aviation - ICAO Doc 9905 Compliant



**FOR CASA APPROVED
OPERATORS ONLY
USE QNH**

**RNP W RWY 29 (AR)
DARWIN, NT (YPDN)**

30 NOV 2023



CATEGORY	A	B	C	D
RNP (0.30)	N/A		DA(H) 500 (419 - 2.4) 1.5 HIALS	DA(H) 500 (419 - 2.4) 1.5 HIALS
RNP (0.15)			DA(H) 444 (363 - 2.1) 1.2 HIALS	DA(H) 444 (363 - 2.1) 1.2 HIALS
CIRCLING			NOT AUTHORISED	NOT AUTHORISED
ALTERNATE				

NOTES

1. PAPI not coincident with VPA.
2. RNP 0.3 RQ FROM WOKKI TO DN432.
3. RNP 0.3 RQ FROM KITTY TO DN432.
4. MIN MAP GRAD 4.1% TO 3000FT per ATC.
- 5#. Latest Intercept Point (LIP)

202307250539 COPYRIGHT © GE DIGITAL, 2023. ALL RIGHTS RESERVED. GE PROPRIETARY INFORMATION

Changes: EDITORIAL

PDNGN19-177

DO NOT USE FOR NAVIGATION

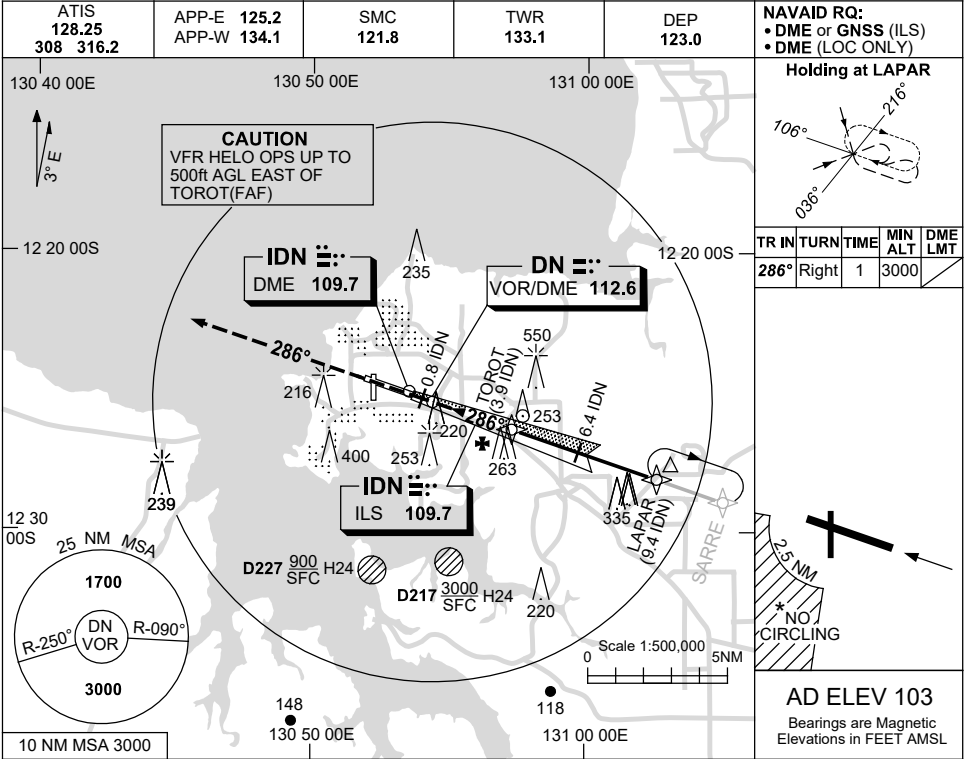
© Airservices Australia 2024 Prepared by GE Aviation - ICAO Doc 9905 Compliant



USE QNH

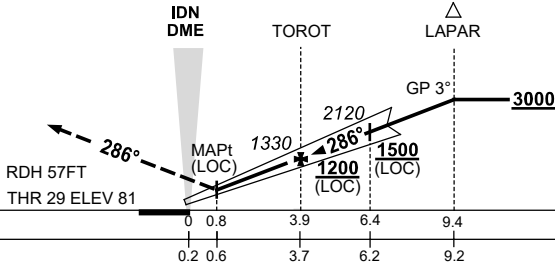
ILS-Z or LOC-Z RWY 29
DARWIN, NT (YPDN)

30 NOV 2023



NM TO IDN DME	1.4	2	3	3.9	5	6	6.4	7	8	9	9.2		
ALT (3° APCH PATH)	520	720	1040	1330	1680	2000	2120	2310	2630	2950	3000		

MISSED APPROACH:
 TRACK 286°
 CLIMB TO 3000FT OR
 AS DIRECTED BY ATC.



NM TO IDN DME													
NM TO THR 29													

NOTES

1. ACFT MAY BE RADAR VECTORED TO FNA.
2. SPECIAL ALTN MNM 800/4 KM.
3. DME 41X(110.4) NOT TO BE USED WITH THIS PROCEDURE.
4. NO CIRCLING IN SECTOR SW OF RWY 11/29 AND RWY 18/36 BEYOND 2.5NM.

CATEGORY	A	B	C	D
S-I ILS		290 (209) 0.8		
S-I LOC		520 (439-1.6)		
CIRCLING *	700 (597-2.4)		800 (697-4.0)	1000 (897-5.0)
ALTERNATE ‡	(1097-4.4)		(1197-6.0)	(1397-7.0)

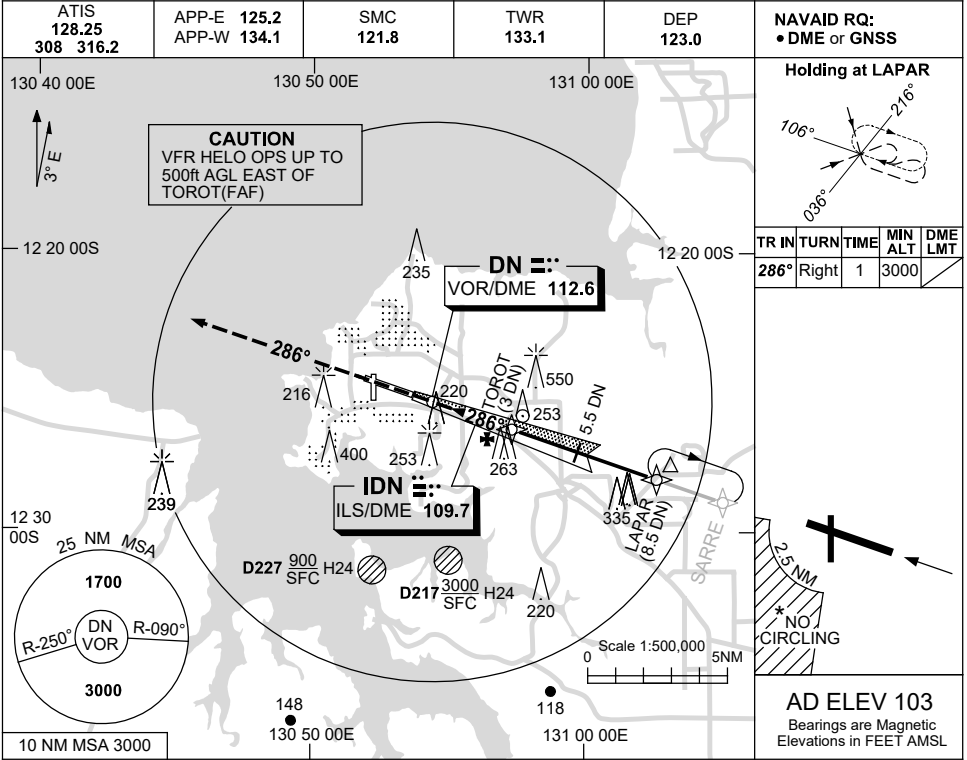
Changes: MAPt DIST, NEW LOGO, Editorial.

PDNII01-177

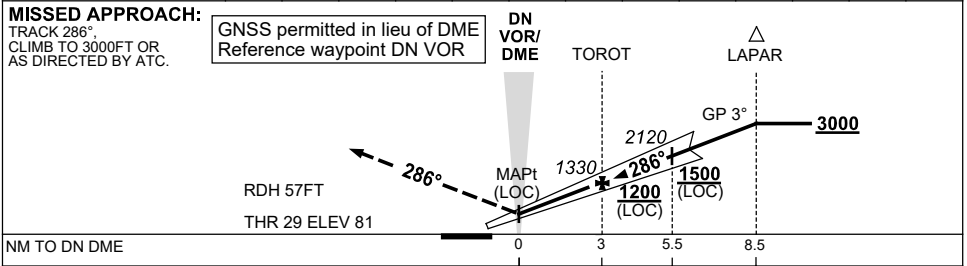
USE QNH

ILS-X or LOC-X RWY 29
DARWIN, NT (YPDN)

30 NOV 2023



NM TO DN DME	0.5	1	2	3	4	5	5.5	6	7	8	8.2		
ALT (3° APCH PATH)	520	690	1010	1330	1650	1970	2120	2280	2600	2920	3000		



NOTES

1. ACFT MAY BE RADAR VECTORED TO FNA.
- * 2. SPECIAL ALTN MNM 800/4 KM.
3. DME 41X(110.4) NOT TO BE USED WITH THIS PROCEDURE.
- * 4. NO CIRCLING IN SECTOR SW OF RWY 11/29 AND RWY 18/36 BEYOND 2.5NM.

CATEGORY	A	B	C	D
S-I ILS		290 (209) 0.8		
S-I LOC		520 (439-1.6)		
CIRCLING *	700 (597-2.4)		800 (697-4.0)	1000 (897-5.0)
ALTERNATE ‡	(1097-4.4)		(1197-6.0)	(1397-7.0)

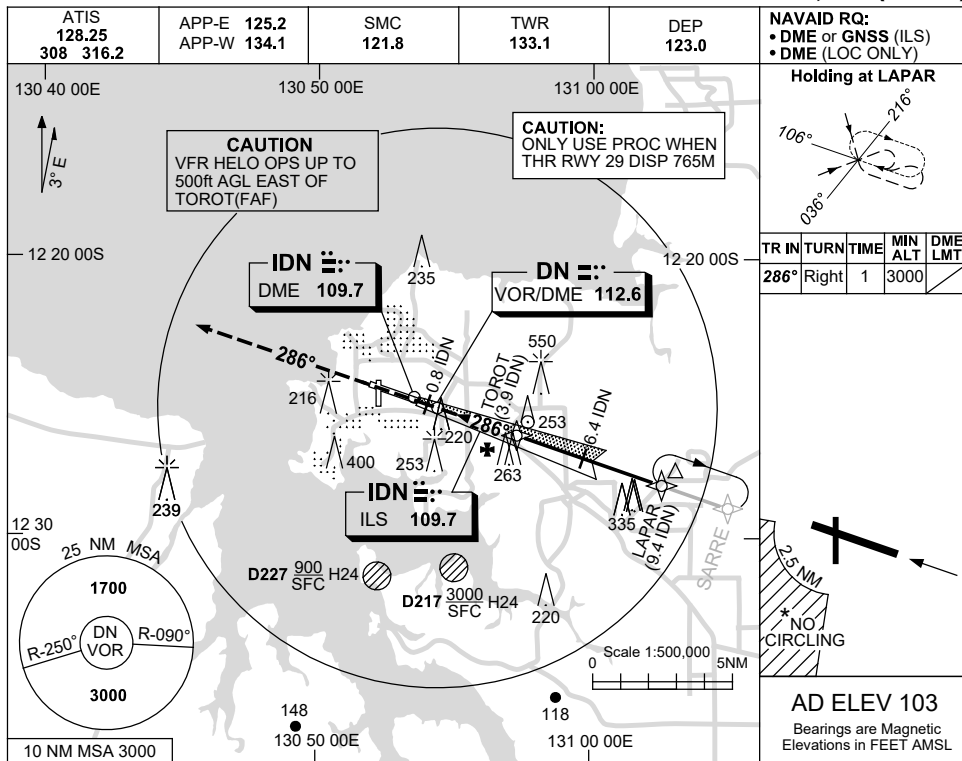
Changes: NEW LOGO, Editorial.

PDNI02-177

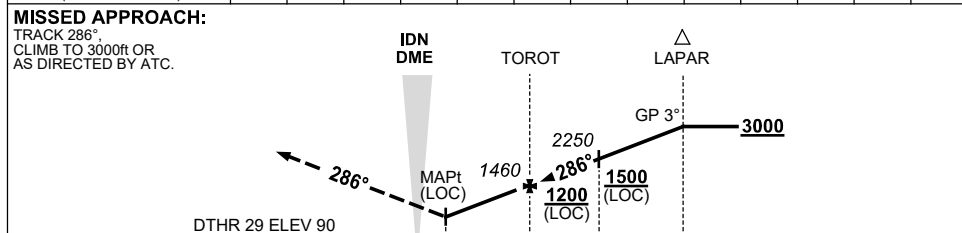
USE QNH

LOC-T RWY 29
DARWIN, NT (YPDN)

21 MAR 2024



NM TO IDN DME	1	2	3	3.9	5	6	6.4	7	8	8.7			
ALT (3° APCH PATH)	520	850	1170	1460	1810	2130	2250	2440	2760	3000			



NM TO IDN DME		0	0.8	3.9	6.4	9.4
NM TO DTHR 29		0.2	1	4.1	6.6	9.6

NOTES

- ACFT MAY BE RADAR VECTORED TO FNA.
- SPECIAL ALTN MNM 800/4 KM.
- DME 41X(110.4) NOT TO BE USED WITH THIS PROCEDURE.
- NO CIRCLING IN SECTOR SW OF RWY 11/29 AND RWY 18/36 BEYOND 2.5NM.

CATEGORY	A	B	C	D
S-I LOC	520 (430-2.4)			
CIRCLING *	700 (597-2.4)	800 (697-4.0)		1000 (897-5.0)
ALTERNATE *	(1097-4.4)	(1197-6.0)		(1397-7.0)

Changes: S-I LOC VIS.

PDNII04-178

NOISE ABATEMENT PROCEDURES

DARWIN

1 PREFERRED RUNWAYS

- 1.1 LANDING Runway 11 for arrival tracks within the sector 200° through NORTH to 020°.
Runway 29 for arrival tracks within the sector 021° through SOUTH to 199°.
- 1.2 TAKE-OFF Runway 11 for departure tracks within the sector 021° through SOUTH to 199°.
Runway 29 for departure tracks within the sector 200° through NORTH to 020°.

2 PREFERRED FLIGHT PATHS

2.1 ARRIVING AIRCRAFT

2.1.1 Preferred runway requirements apply.

2.1.2 Arriving aircraft at night:

All JET and TURBOPROP aircraft above 25,000KG arriving from the WEST to land RWY 29, or arriving from the EAST to land RWY 11 can expect radar vectoring NORTH of built up areas or SOUTH over water, HN.

2.1.3 **Military Strike/Fighter Aircraft**

In VMC, military aircraft can expect straight-in visual approach. VTOL OPS are not permitted. Initial and break/pitch not permitted. In case of visual overshoot or go-round, maintain runway heading until 2000FT AMSL, proceed for further straight-in approach. If fuel limited, make circuit SOUTH of Runway 11/29.

2.2 DEPARTING AIRCRAFT

2.2.1 All Runways:

IFR category aircraft can expect to be instructed by ATC to track via Standard Instrument Departure (SID).

2.2.2 Unless cleared via SID, all JET and TURBOPROP aircraft above 25,000KG are to maintain runway heading until 2000FT AMSL and:

- (a) 2DME(GPS)/3TAC off RWY 11 between 2030 and 1230 UTC
- (b) 7DME(GPS)/8TAC off RWY 11 between 1230 and 2030 UTC
- (c) 5DME(GPS)/3TAC off RWY 29

17 AUG 2017

2.2.3 Military Strike/Fighter Aircraft:

NOTE: These procedures are additional to and take precedence over the requirements contained in Darwin SID "DARWIN.....DEPARTURE - ALL RUNWAYS".

Rolling take-offs are preferred. Aircraft are to minimise use of afterburner. VTOL OPS not permitted.

RWY 11:

High Level Sorties shall maintain runway heading until above 5000FT AMSL, then turn.

Low Level Sorties (below 5000FT) if approved by RAAF Darwin ABCP due to operational requirements shall maintain runway heading until LAPAR/10TAC/9DME (GNSS), then turn and remain outside 10TAC/9DME(GNSS) to intercept outbound track.

RWY 29:

Aircraft shall maintain runway heading until above 2000FT AMSL and established over water, then turn.

3 - TRAINING

See AIP/ERSA.

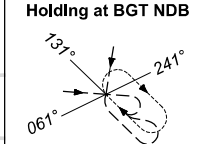
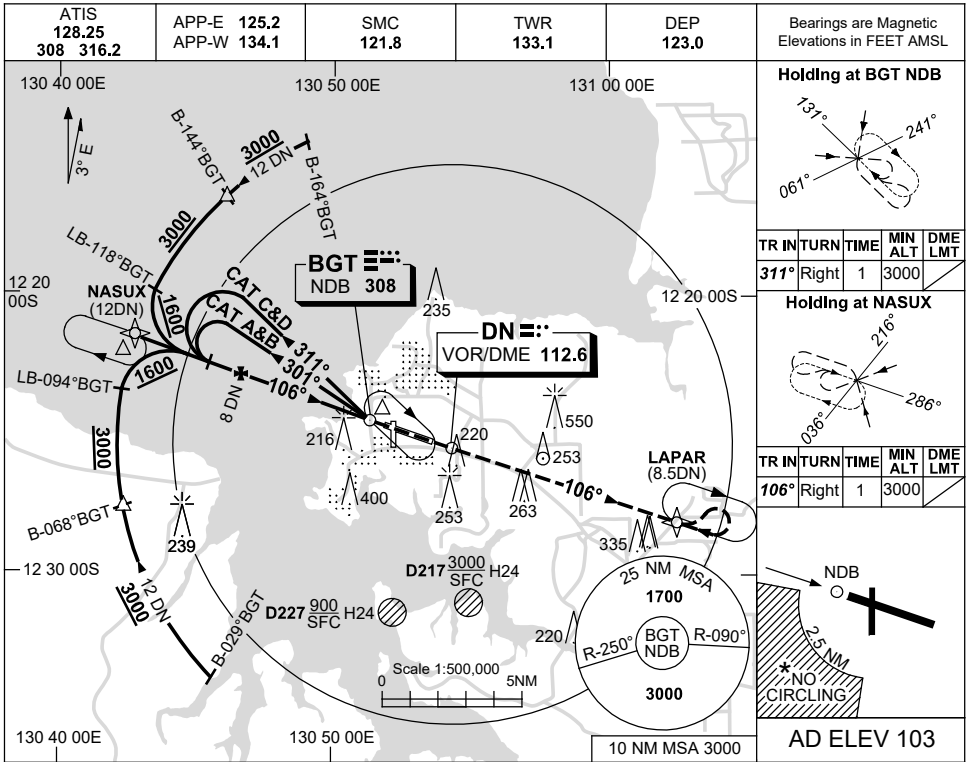
4 - NOTE:

Australian registered jet propelled aircraft that are noise certified as per ICAO Annex 16 may conduct operations using Runway 18/36.

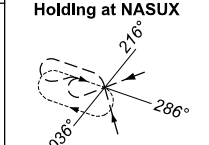
USE QNH

NDB-Z RWY 11
DARWIN, NT (YPDN)

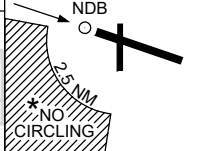
1 DEC 2022



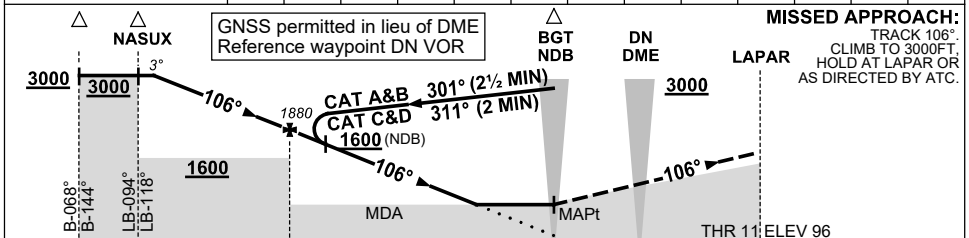
TR	IN	TURN	TIME	MIN	DME
311°	Right	1	3000	ALTM	LMT



TR	IN	TURN	TIME	MIN	DME
106°	Right	1	3000	ALTM	LMT



DIST BY DME	11.5	11	10	9	8	7	6	5	4	3.7
ALT (3° APCH PATH)	3000	2840	2520	2200	1880	1560	1240	930	610	520



MISSED APPROACH:
 TRACK 106°
 CLIMB TO 3000FT.
 HOLD AT LAPAR OR
 AS DIRECTED BY ATC.

CATEGORY	A	B	C	D
S-I NDB		560 (457-2.6)		
S-I NDB/DME		520 (417-2.3)		
CIRCLING *	700 (597-2.4)		800 (697-4.0)	1000 (897-5.0)
ALTERNATE **	(1097-4.4)		(1197-6.0)	(1397-7.0)

NOTES

- MAX IAS: INITIAL : 210KT.
- ACFT MAY BE RADAR VECTORED TO FINAL.
- DME 41X(110.4) NOT TO BE USED WITH THIS PROCEDURE.
- SPECIAL ALTN MNM 800/4 KM.
- NO CIRCLING IN SECTOR SW OF RWY 11/29 AND RWY 18/36 BEYOND 2.5NM.

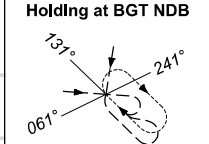
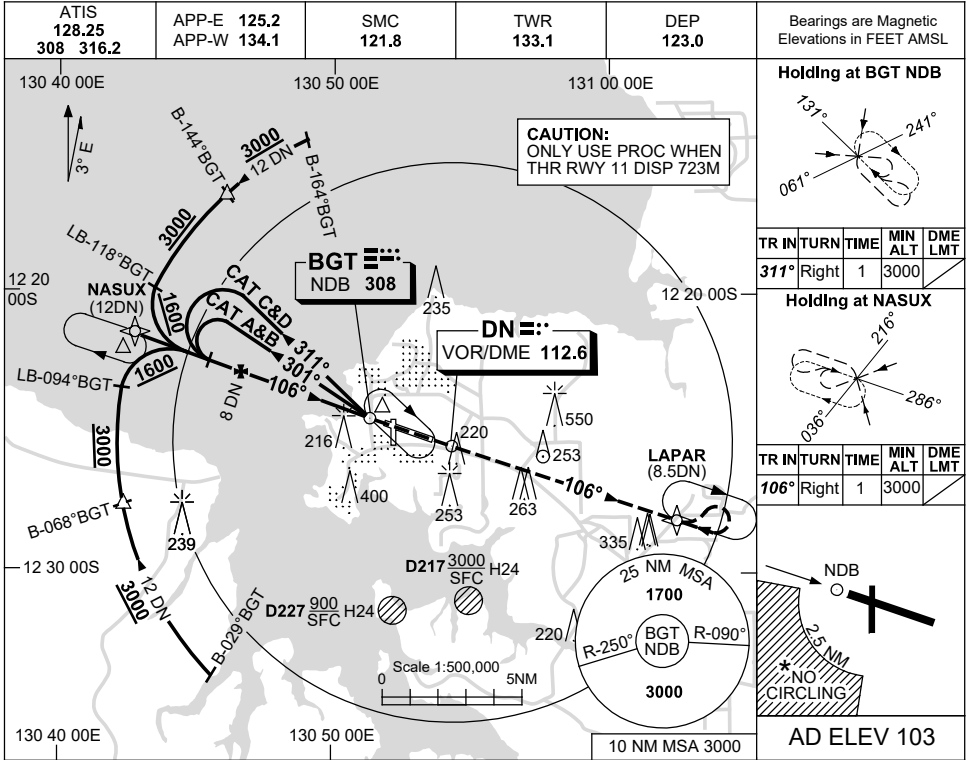
Changes: MAG VAR.

PDNNB01-173

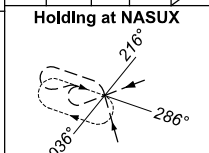
USE QNH

NDB-T RWY 11
DARWIN, NT (YPDN)

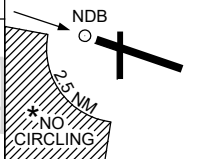
1 DEC 2022



TR	IN	TURN	TIME	MIN	DME
311°	Right	1	3000	ALT	LMT

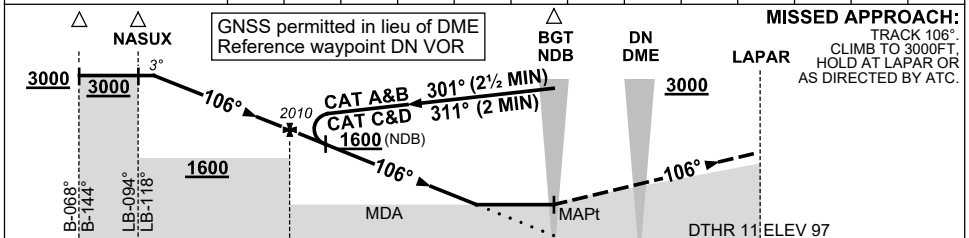


TR	IN	TURN	TIME	MIN	DME
106°	Right	1	3000	ALT	LMT



AD ELEV 103

DIST BY DME	11.1	11	10	9	8	7	6	5	4	3.3
ALT (3° APCH PATH)	3000	2960	2640	2320	2010	1690	1370	1050	730	520



- NOTES**
- MAX IAS: INITIAL : 210KT.
 - ACFT MAY BE RADAR VECTORED TO FINAL.
 - DME 41X(110.4) NOT TO BE USED WITH THIS PROCEDURE.
 - SPECIAL ALTN MNM 800/4 KM.
 - NO CIRCLING IN SECTOR SW OF RWY 11/29 AND RWY 18/36 BEYOND 2.5NM.

CATEGORY	A	B	C	D
S-I NDB		560 (457-2.6)		
S-I NDB/DME		520 (417-2.3)		
CIRCLING *	700 (597-2.4)		800 (697-4.0)	1000(897-5.0)
ALTERNATE *	(1097-4.4)		(1197-6.0)	(1397-7.0)

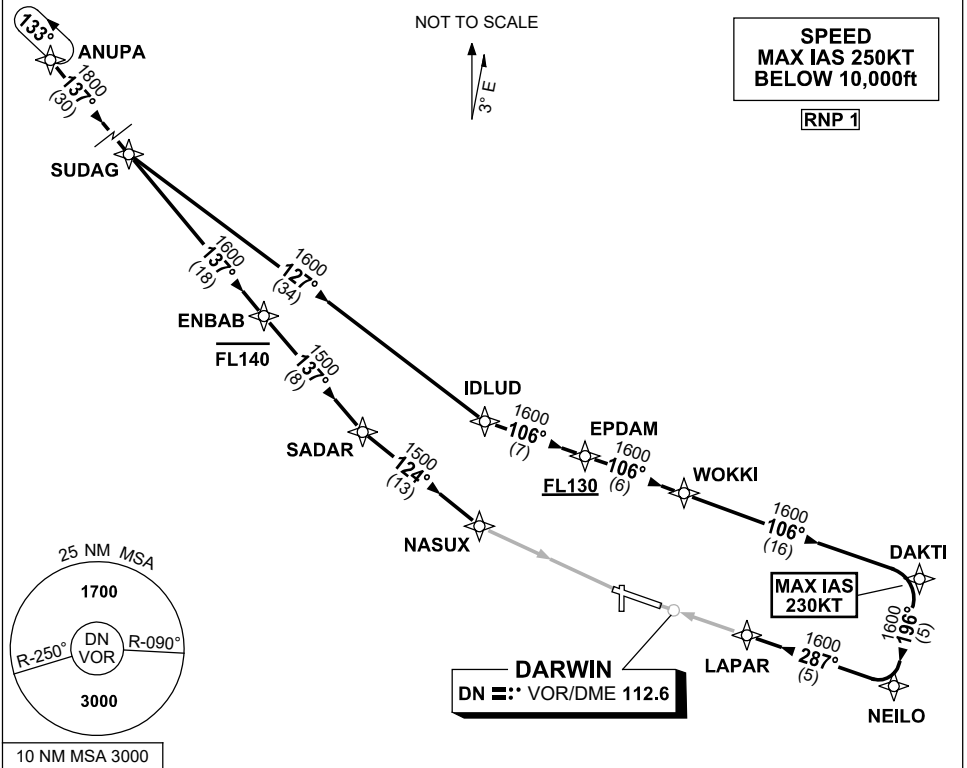
Changes: MAG VAR AND NOTE 3.

PDNNB03-173

**STANDARD INSTRUMENT ARRIVAL (STAR)
ANUPA ONE X-RAY ARRIVAL (RNAV)
DARWIN, NT (YPDN)**

30 NOV 2023

ATIS 128.25 308 316.2	APP-E 125.2 APP-W 134.1	TWR 133.1	SMC 121.8		Bearings are Magnetic Elevations in FEET AMSL
-----------------------------	----------------------------	--------------	--------------	--	--



ARRIVAL: ANUPA ONE X-RAY

RWY 11:

- From ANUPA track 137° to SUDAG
- Track 137° to ENBAB
 Cross ENBAB AT or BLW FL140
- Track 137° to SADAR
- Turn LEFT, track 124° to NASUX for RNP X (AR) or RNP Y (AR) RWY 11 approach

RWY 29:

- From ANUPA track 137° to SUDAG
- Turn LEFT, track 127° to IDLUD
- Turn LEFT, track 106° to EPDAM
 Cross EPDAM AT or ABV FL130
- Track 106° to WOKKI
- Track 106° to DAKTI
 MAX IAS 230KT from DAKTI
- Turn RIGHT, track 196° to NEILO
- Turn RIGHT, track 287° to LAPAR for RNP X (AR) or RNP Y (AR) RWY 29 approach

COMMUNICATIONS FAILURE: PROCEDURE IN IMC

- Squawk 7600, comply with vertical navigation requirements, but not below MSA.
- Track via the latest STAR clearance to the nominated runway, then fly the most suitable approach in accordance with ERSA EMERG Section 1.5.

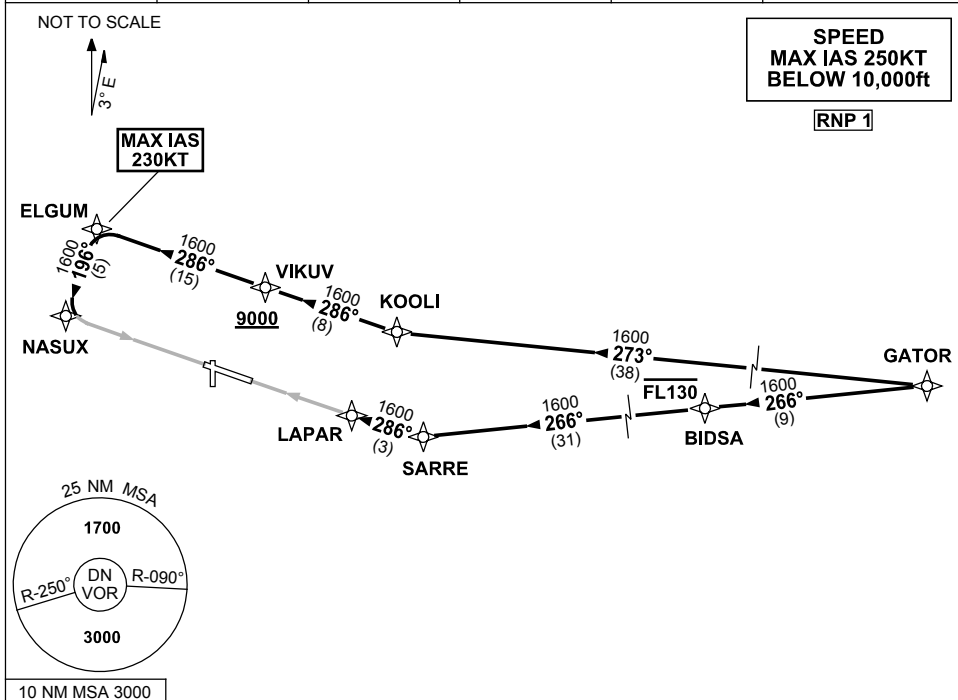
Changes: ANUPA REPLACES DONYA, CHART TITLE, Editorial.

PDNSR01-177

**STANDARD INSTRUMENT ARRIVAL (STAR)
GATOR ONE X-RAY ARRIVAL (RNAV)
DARWIN, NT (YPDN)**

7 SEP 2023

ATIS 128.25 308 316.2	APP-E 125.2 APP-W 134.1	TWR 133.1	SMC 121.8		Bearings are Magnetic Elevations in FEET AMSL
-----------------------------	----------------------------	--------------	--------------	--	--



ARRIVAL: GATOR ONE X-RAY

RWY 11:

- From GATOR track 273° to KOOLI
- Turn RIGHT, track 286° to VIKUV
 Cross VIKUV AT or ABV 9000ft
- Track 286° to ELGUM,
 MAX IAS 230KT FROM ELGUM
- Turn LEFT track 196° to NASUX
 for RNP X (AR) or RNP Y (AR)
 RWY 11 approach

RWY 29:

- From GATOR track 266° TO BIDS
- **Cross** BIDS AT or BLW FL130
- Track 266° to SARRE
- Turn RIGHT, track 286° to LAPAR for
 RNP X (AR) or RNP Y (AR) RWY 29
 approach

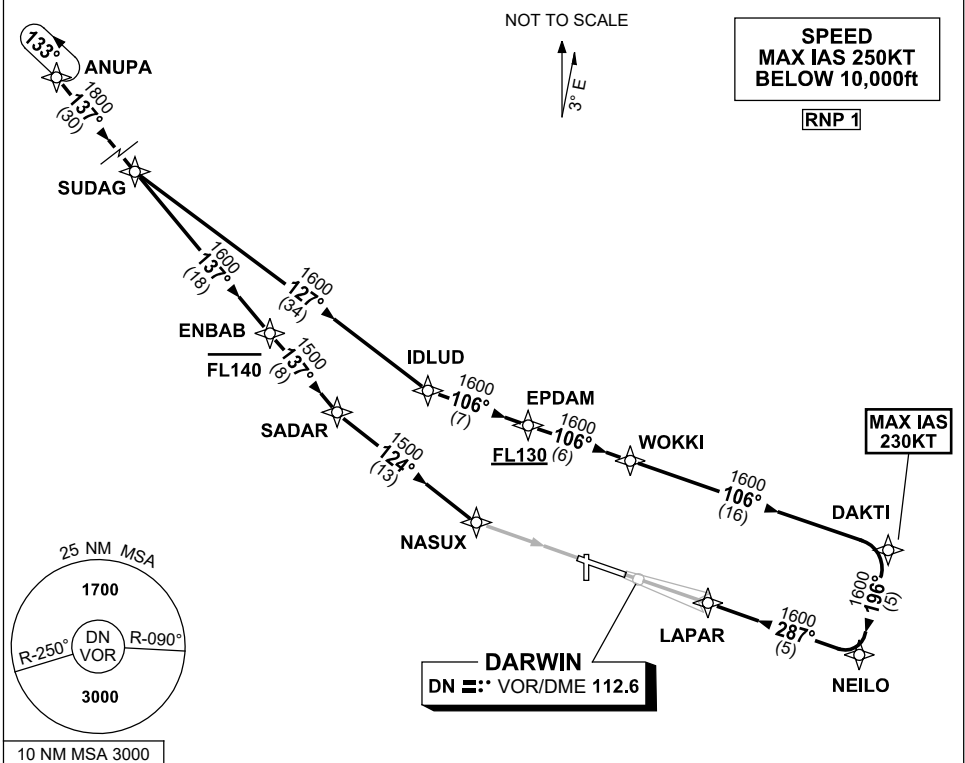
COMMUNICATIONS FAILURE: PROCEDURE IN IMC

- Squawk 7600, comply with vertical navigation requirements, but not below MSA.
- Track via the latest STAR clearance to the nominated runway, then fly the most suitable approach in accordance with ERSA EMERG Section 1.5.

**STANDARD INSTRUMENT ARRIVAL (STAR)
ANUPA ONE ALPHA ARRIVAL (RNAV)
DARWIN, NT (YPDN)**

30 NOV 2023

ATIS 128.25 308 316.2	APP-E 125.2 APP-W 134.1	TWR 133.1	SMC 121.8		Bearings are Magnetic Elevations in FEET AMSL
-----------------------------	----------------------------	--------------	--------------	--	--



ARRIVAL: ANUPA ONE ALPHA

RWY 11:

- From ANUPA track 137° to SUDAG
- Track 137° to ENBAB
- **Cross** ENBAB AT or BLW FL140
- Track 137° to SADAR
- Turn LEFT, track 124° to NASUX for VOR or NDB RWY 11 approach

RWY 29:

- From ANUPA track 137° to SUDAG
- Turn LEFT, track 127° to IDLUD
- Turn LEFT, track 106° to EPDAM
- **Cross** EPDAM AT or ABV FL130
- Track 106° to WOKKI
- Track 106° to DAKTI
- **MAX IAS 230KT** from DAKTI
- Turn RIGHT, track 196° to NEILO
- Turn RIGHT, track 287° to LAPAR for ILS or LOC RWY 29 approach

COMMUNICATIONS FAILURE: PROCEDURE IN IMC

- Squawk 7600, comply with vertical navigation requirements, but not below MSA.
- Track via the latest STAR clearance to the nominated runway, then fly the most suitable approach in accordance with ERSA EMERG Section 1.5.

Changes: ANUPA REPLACES DONYA, CHART TITLE, Editorial.

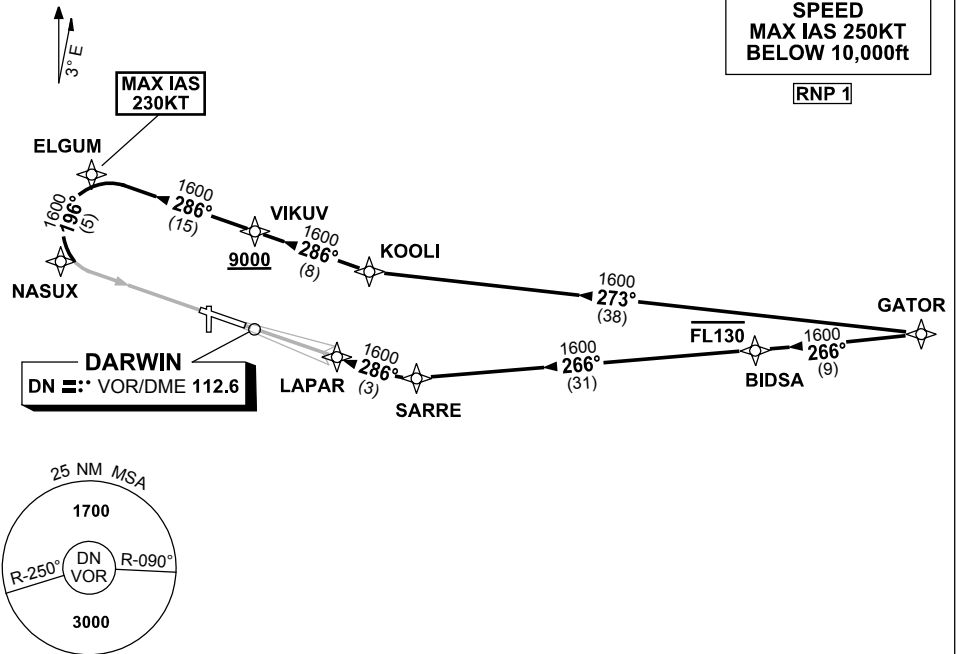
PDNSR03-177

STANDARD INSTRUMENT ARRIVAL (STAR)
GATOR ONE ALPHA ARRIVAL (RNAV)
DARWIN, NT (YPDN)

7 SEP 2023

ATIS 128.25 308 316.2	APP-E 125.2 APP-W 134.1	TWR 133.1	SMC 121.8		Bearings are Magnetic Elevations in FEET AMSL
-----------------------------	----------------------------	--------------	--------------	--	--

NOT TO SCALE



ARRIVAL: GATOR ONE ALPHA

RWY 11:

- From GATOR track 273° to KOOLI
- Turn RIGHT, track 286° to VIKUV
Cross VIKUV AT or ABV 9000ft
- Track 286° to ELGUM,
MAX IAS 230KT FROM ELGUM
- Turn LEFT track 196° to NASUX
for VOR or NDB RWY 11 approach

RWY 29:

- From GATOR track 266° TO BIDSA
Cross BIDSA AT or BLW FL130
- Track 266° to SARRE
- Turn RIGHT track 286° to LAPAR for ILS or
LOC RWY 29 approach.

COMMUNICATIONS FAILURE: PROCEDURE IN IMC

- Squawk 7600, comply with vertical navigation requirements, but not below MSA.
- Track via the latest STAR clearance to the nominated runway, then fly the most suitable approach in accordance with ERSA EMERG Section 1.5.

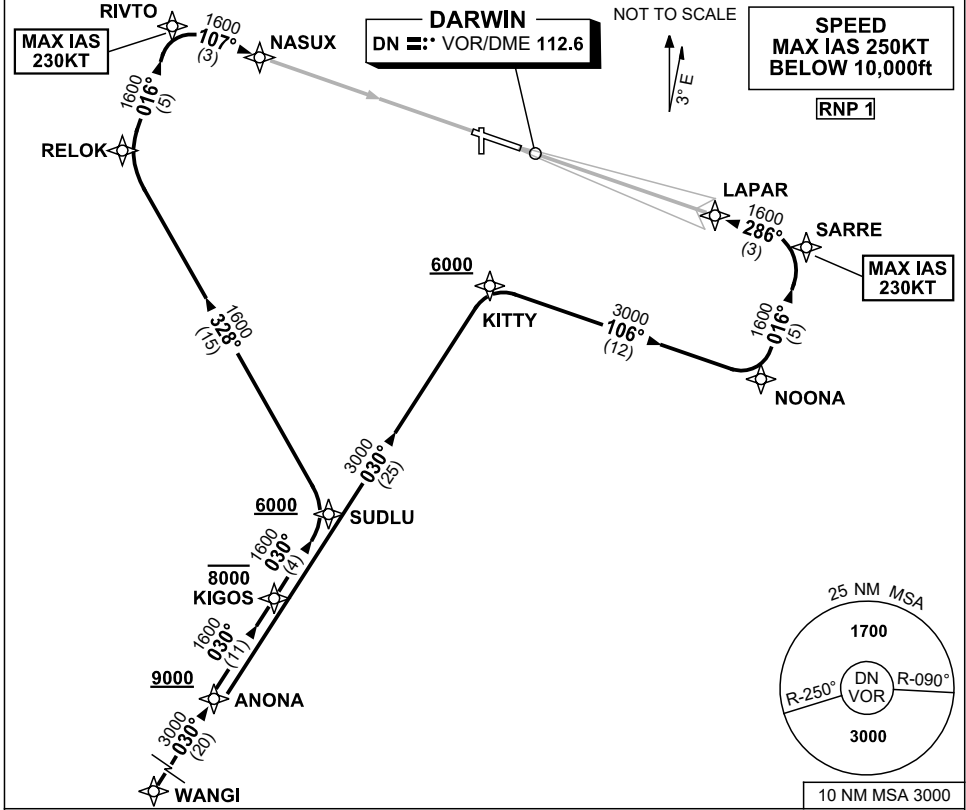
Changes: VALIDITY INDICATOR.

PDNSR04-176

STANDARD INSTRUMENT ARRIVAL (STAR)
WANGI FOUR ALPHA ARRIVAL (RNAV)
DARWIN, NT (YPDN)

30 NOV 2023

ATIS 128.25 308 316.2	APP-E 125.2 APP-W 134.1	TWR 133.1	SMC 121.8		Bearings are Magnetic Elevations in FEET AMSL
-----------------------------	----------------------------	--------------	--------------	--	--



ARRIVAL: WANGI FOUR ALPHA

RWY 11:

- From WANGI track 030° to ANONA
Cross ANONA AT or ABV 9000ft
- Track 030° to KIGOS
Cross KIGOS AT or BLW 8000ft
- Track 030° to SUDLU
Cross SUDLU AT or ABV 6000ft
- Turn LEFT, track 328° to RELOK
- Turn RIGHT track 016° to RIVTO,
MAX IAS 230KT from RIVTO
- Turn RIGHT track 107° to NASUX for
VOR or NDB RWY 11 approach

RWY 29:

- From WANGI track 030° to ANONA
Cross ANONA AT or ABV 9000ft
- Track 030° to KITTY
Cross KITTY AT or ABV 6000ft
- Turn RIGHT, track 106° to NOONA
- Turn LEFT, track 016° to SARRE
MAX IAS 230KT from SARRE
- Turn LEFT, track 286° to LAPAR for
ILS or LOC RWY 29 approach

COMMUNICATIONS FAILURE: PROCEDURE IN IMC

- Squawk 7600, comply with vertical navigation requirements, but not below MSA.
- Track via the latest STAR clearance to the nominated runway, then fly the most suitable approach in accordance with ERSA EMERG Section 1.5.

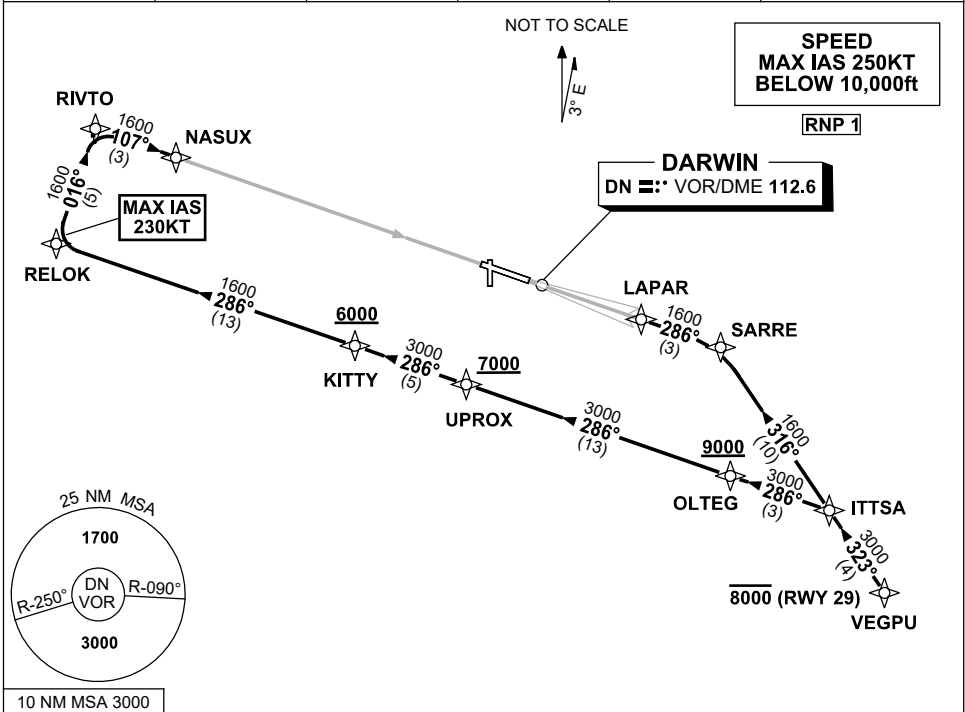
Changes: RIVTO REPLACES ALLOT, RELOK REPLACES GIVEN, SUDLU REPLACES KINGS, Editorial.

PDNSR05-177

STANDARD INSTRUMENT ARRIVAL (STAR)
VEGPU NINE ALPHA ARRIVAL (RNAV)
DARWIN, NT (YPDN)

30 NOV 2023

ATIS 128.25 308 316.2	APP-E 125.2 APP-W 134.1	TWR 133.1	SMC 121.8		Bearings are Magnetic Elevations in FEET AMSL
-----------------------------	----------------------------	--------------	--------------	--	--



ARRIVAL: VEGPU NINE ALPHA

RWY 11:

- From VEGPU track 323° to ITTSA
- Turn LEFT, track 286° to OLTEG
Cross OLTEG AT or ABV 9000ft
- Track 286° to UPROX
Cross UPROX AT or ABV 7000ft
- Track 286° to KITTY
Cross KITTY AT or ABV 6000ft
- Track 286° to RELOK
MAX IAS 230KT from RELOK
- Turn RIGHT track 016° to RIVTO
- Turn RIGHT track 107° to NASUX for VOR or NDB RWY 11 approach

RWY 29:

- **Cross** VEGPU AT or BLW 8000ft
- From VEGPU, track 323° to ITTSA
- Turn LEFT, track 316° to SARRE
- Turn LEFT, track 286° to LAPAR for ILS or LOC RWY 29 approach

COMMUNICATIONS FAILURE: PROCEDURE IN IMC

- Squawk 7600, comply with vertical navigation requirements, but not below MSA.
- Track via the latest STAR clearance to the nominated runway, then fly the most suitable approach in accordance with ERSA EMERG Section 1.5.

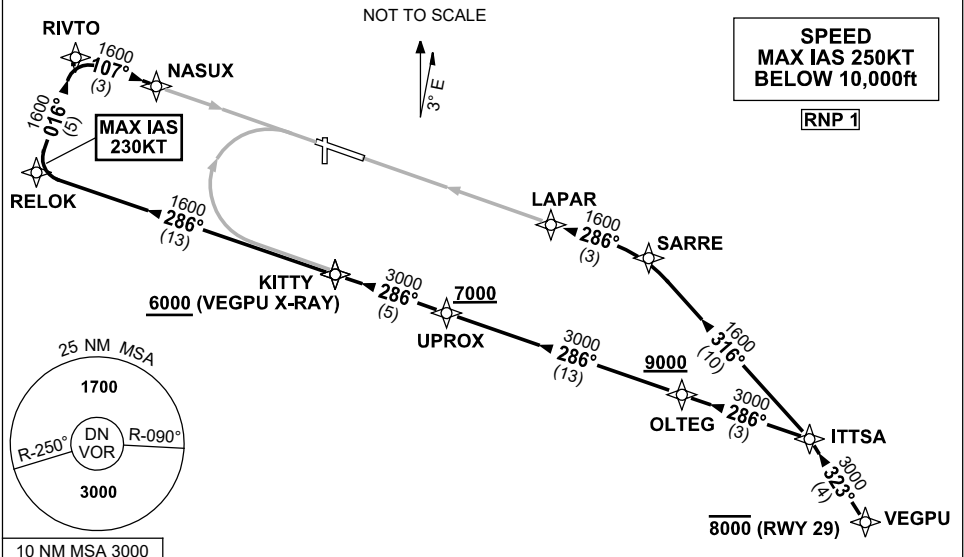
Changes: RIVTO REPLACES ALLOT, RELOK REPLACES GIVEN, VALIDITY NUMBER, Editorial.

PDNSR06-177

**STANDARD INSTRUMENT ARRIVAL (STAR)
VEGPU NINE WHISKEY, X-RAY ARRIVAL (RNAV)
DARWIN, NT (YDPN)**

30 NOV 2023

ATIS 128.25 308 316.2	APP-E 125.2 APP-W 134.1	TWR 133.1	SMC 121.8		Bearings are Magnetic Elevations in FEET AMSL
-----------------------------	----------------------------	--------------	--------------	--	--



ARRIVAL: VEGPU NINE

RWY 11 WHISKEY:

- From VEGPU track 323° to ITTSA
- Turn LEFT, track 286° to OLTEG
Cross OLTEG AT or ABV 9000ft
- Track 286° to UPROX
Cross UPROX AT or ABV 7000ft
- Track 286° to KITTY for RNP W (AR) or RNP S (AR) RWY 11 approach

RWY 11 X-RAY:

- From VEGPU track 323° to ITTSA
- Turn LEFT, track 286° to OLTEG
Cross OLTEG AT or ABV 9000ft
- Track 286° to UPROX
Cross UPROX AT or ABV 7000ft
- Track 286° to KITTY
Cross KITTY AT or ABV 6000ft
- Track 286° to RELOK
MAX IAS 230KT from RELOK
- Turn RIGHT track 016° to RIVTO
- Turn RIGHT track 107° to NASUX for RNP X (AR) or RNP Y (AR) RWY 11 approach

RWY 29 X-RAY:

- Cross VEGPU AT or BLW 8000ft
- From VEGPU, track 323° to ITTSA
- Turn LEFT, track 316° to SARRE
- Turn LEFT, track 286° to LAPAR for RNP X (AR) or RNP Y (AR) RWY 29 approach

COMMUNICATIONS FAILURE: PROCEDURE IN IMC

- Squawk 7600, comply with vertical navigation requirements, but not below MSA.
- Track via the latest STAR clearance to the nominated runway, then fly the most suitable approach in accordance with ERSA EMERG Section 1.5.

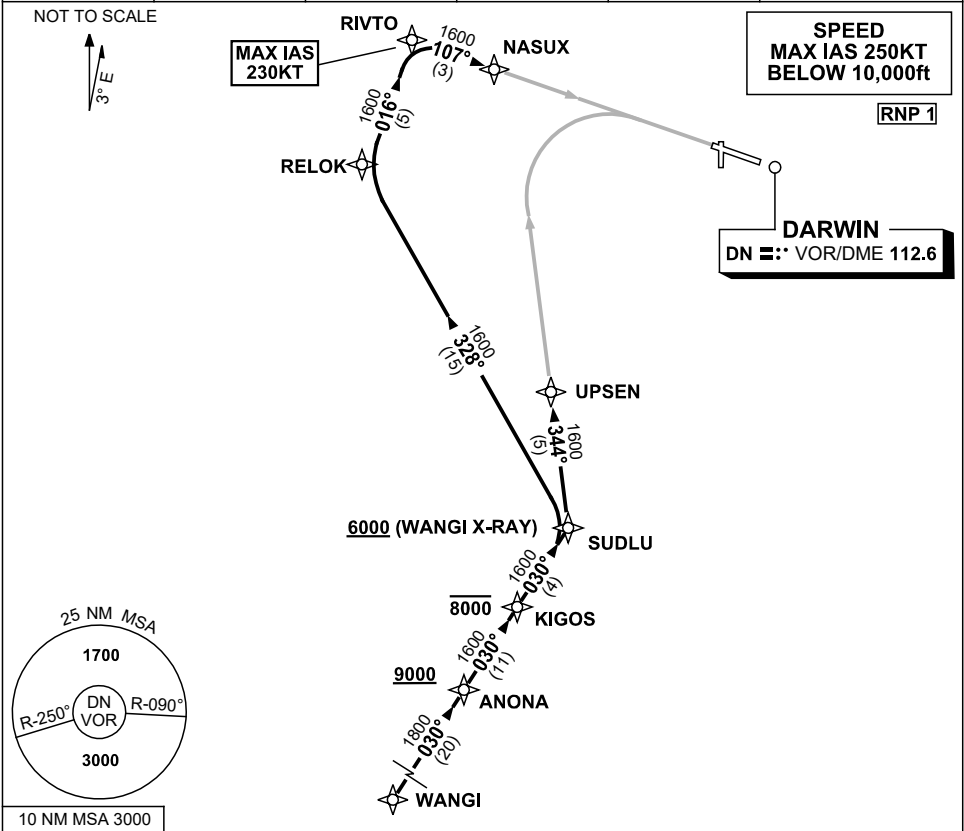
Changes: RIVTO REPLACES ALLOT, RELOK REPLACES GIVEN, VALIDITY NUMBER, Editorial.

PDNSR07-177

**STANDARD INSTRUMENT ARRIVAL (STAR)
WANGI FOUR WHISKEY, X-RAY ARRIVALS (RNAV) RWY 11
DARWIN, NT (YPDN)**

30 NOV 2023

ATIS 128.25 308 316.2	APP-E 125.2 APP-W 134.1	TWR 133.1	SMC 121.8		Bearings are Magnetic Elevations in FEET AMSL
-----------------------------	----------------------------	--------------	--------------	--	--



- | | |
|---|---|
| <p>ARRIVAL: WANGI FOUR</p> <p>RWY 11 WHISKEY:</p> <ul style="list-style-type: none"> From WANGI track 030° to ANONA
Cross ANONA AT or ABV 9000ft Track 030° to KIGOS
Cross KIGOS AT or BLW 8000ft Track 030° to SUDLU Turn LEFT, track 344° to UPSEN for RNP W (AR) or RNP S (AR) RWY 11 approach | <p>RWY 11 X-RAY:</p> <ul style="list-style-type: none"> From WANGI track 030° to ANONA
Cross ANONA AT or ABV 9000ft Track 030° to KIGOS
Cross KIGOS AT or BLW 8000ft Track 030° to SUDLU
Cross SUDLU AT or ABV 6000ft Turn LEFT, track 328° to RELOK Turn RIGHT track 016° to RIVTO, MAX IAS 230KT from RIVTO Turn RIGHT track 107° to NASUX for RNP X (AR) or RNP Y (AR) RWY 11 approach |
|---|---|

COMMUNICATIONS FAILURE: PROCEDURE IN IMC

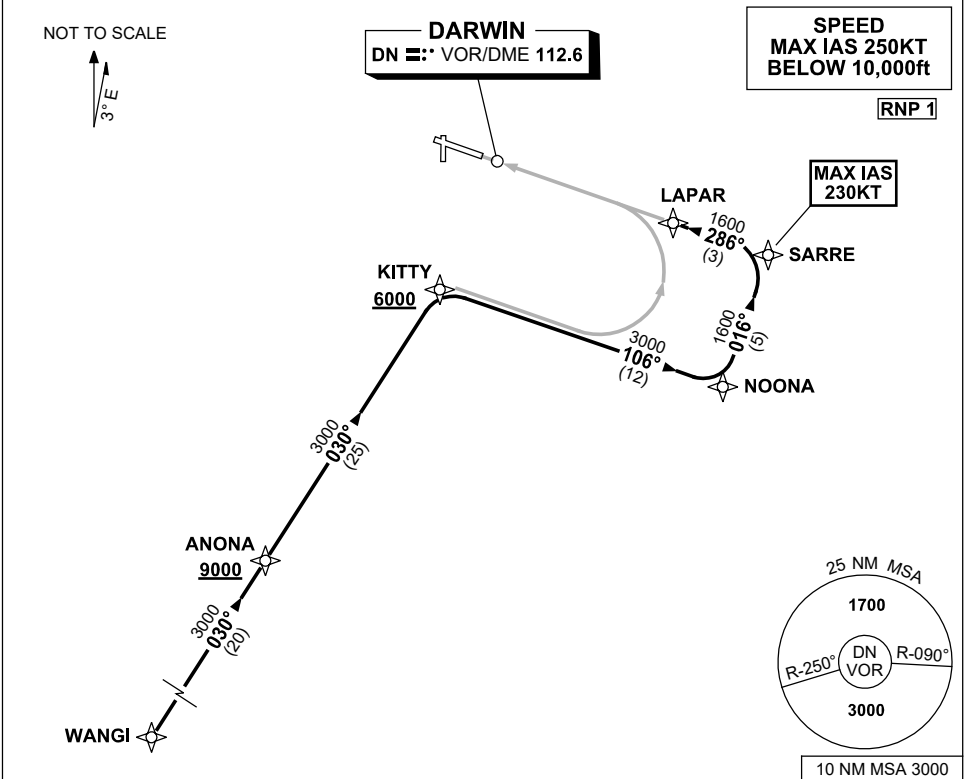
- Squawk 7600, comply with vertical navigation requirements, but not below MSA.
- Track via the latest STAR clearance to the nominated runway, then fly the most suitable approach in accordance with ERSA EMERG Section 1.5.

Changes: RIVTO REPLACES ALLOT, RELOK REPLACES GIVEN, SUDLU REPLACES KINGS, Editorial.

**STANDARD INSTRUMENT ARRIVAL (STAR)
WANGI FOUR WHISKEY, X-RAY ARRIVALS (RNAV) RWY 29
DARWIN, NT (YPDN)**

21 MAR 2024

ATIS 128.25 308 316.2	APP-E 125.2 APP-W 134.1	TWR 133.1	SMC 121.8		Bearings are Magnetic Elevations in FEET AMSL
-----------------------------	----------------------------	--------------	--------------	--	--



ARRIVAL: WANGI FOUR

RWY 29 WHISKEY:

- From WANGI track 030° to ANONA
Cross ANONA AT or ABV 9000ft
- Track 030° to KITTY for RNP W (AR)
or RNP S (AR) RWY 29 approach
Cross KITTY AT or ABV 6000ft

RWY 29 X-RAY:

- From WANGI track 030° to ANONA
Cross ANONA AT or ABV 9000ft
- Track 030° to KITTY
Cross KITTY AT or ABV 6000ft
- Turn RIGHT, track 106° to NOONA
- Turn LEFT, track 016° to SARRE
MAX IAS 230KT from SARRE
- Turn LEFT, track 286° to LAPAR for
RNP X (AR) or RNP Y (AR) RWY 29
approach

COMMUNICATIONS FAILURE: PROCEDURE IN IMC

- Squawk 7600, comply with vertical navigation requirements, but not below MSA.
- Track via the latest STAR clearance to the nominated runway, then fly the most suitable approach in accordance with ERSA EMERG Section 1.5.

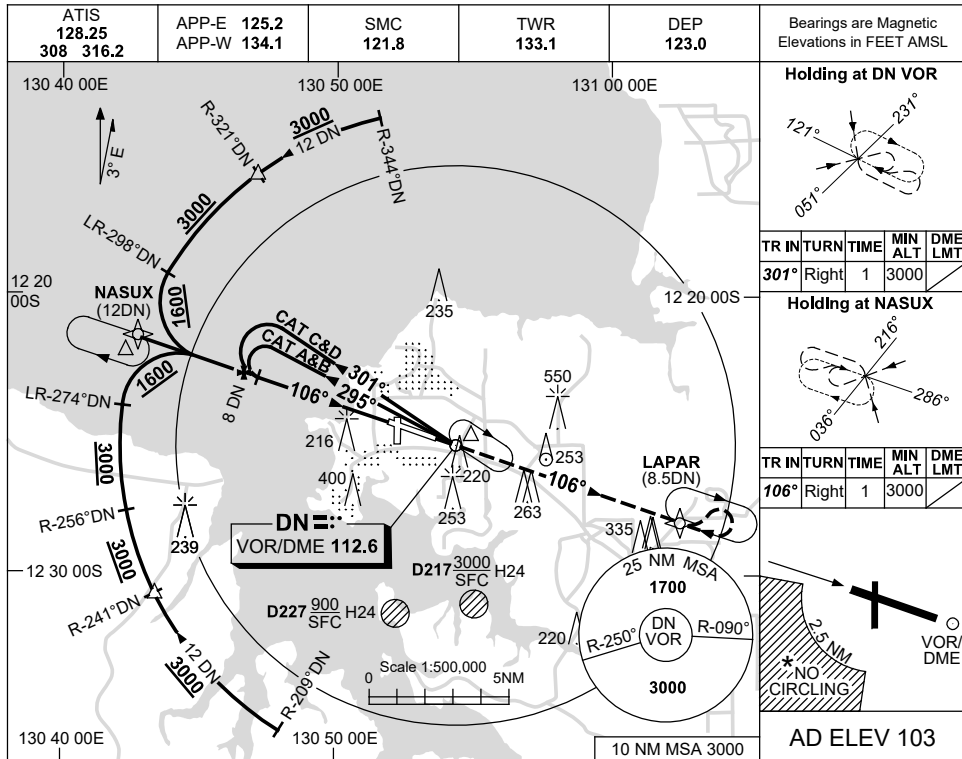
Changes: STAR VALIDITY INDICATOR.

PDNSR09-178

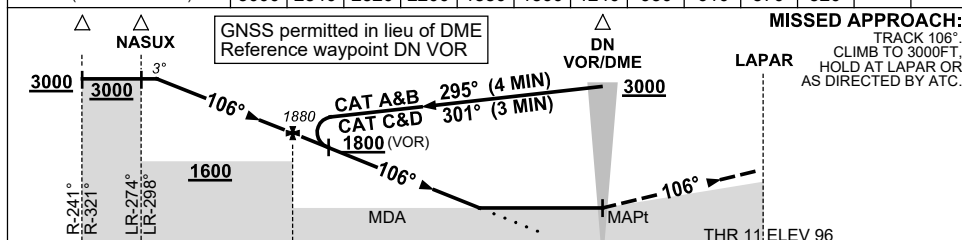
USE QNH

VOR-Z RWY 11
DARWIN, NT (YPDN)

1 DEC 2022



DIST TO DN DME	11.5	11	10	9	8	7	6	5	4	3.9	3.7		
ALT (3° APCH PATH)	3000	2840	2520	2200	1880	1560	1240	930	610	570	520		



NM TO 12 12 8 0 8.5
 DN DME

NOTES

1. MAX IAS: INITIAL : 210KT.
2. ACFT MAY BE RADAR VECTORED TO FINAL.
3. DME 41X(110.4) NOT TO BE USED WITH THIS PROCEDURE.
- *4. SPECIAL ALTN MNM 800/4 KM.
- *5. NO CIRCLING IN SECTOR SW OF RWY 11/29 AND RWY 18/36 BEYOND 2.5NM.

CATEGORY	A	B	C	D
S-I VOR		570 (467-2.6)		
S-I VOR/DME		520 (417-2.3)		
CIRCLING *	700 (597-2.4)	800 (697-4.0)	1000 (897-5.0)	
ALTERNATE *	(1097-4.4)	(1197-6.0)	(1397-7.0)	

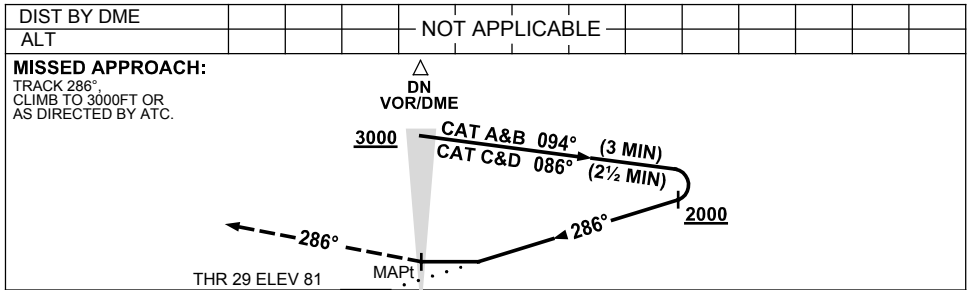
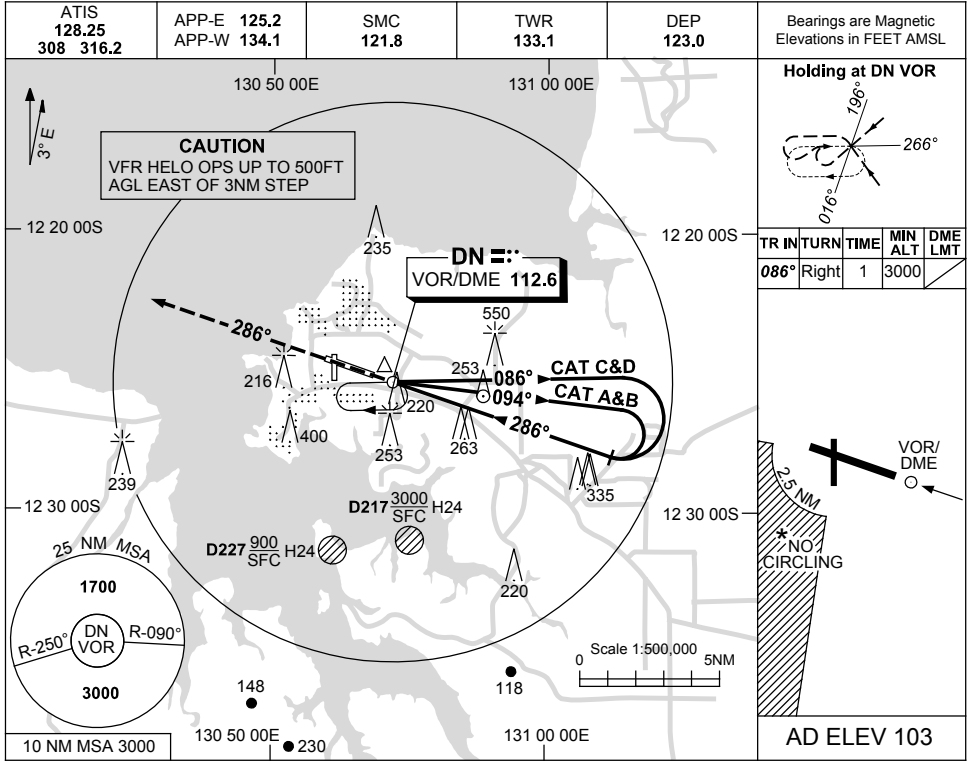
Changes: MAG VAR AND NOTE 3.

PDNV001-173

USE QNH

VOR-Y RWY 29
DARWIN, NT (YPDN)

23 MAR 2023



NOTES

CATEGORY	A	B	C	D
S-I VOR	1100 (1019-4.9)			
CIRCLING *	1100 (997-2.4)	1100 (997-4.0)		1100 (997-5.0)
ALTERNATE	(1497-4.4)	(1497-6.0)		(1497-7.0)

1. MAX IAS:
 INITIAL: CAT C/D 210KT
2. ACFT MAY BE RADAR
 VECTORED TO FINAL.
- *3. NO CIRCLING IN SECTOR
 SW OF RWY 11/29 AND
 RWY 18/36 BEYOND 2.5NM.

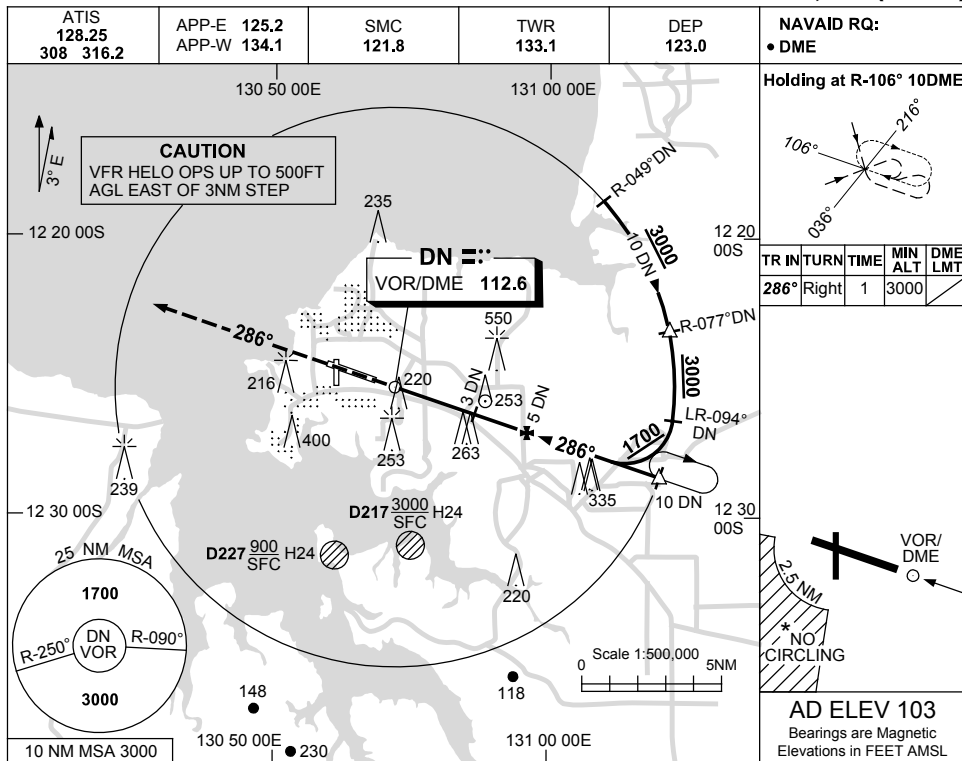
Changes: VIS MINIMA.

PDNVO02-174

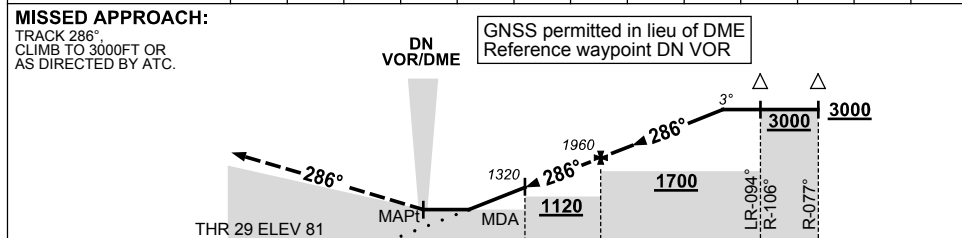
USE QNH

VOR-Z RWY 29
DARWIN, NT (YPDN)

23 MAR 2023



DIST TO DN DME	0.6	1	2	3	4	5	6	7	8	8.3		
ALT (3° APCH PATH)	570	690	1000	1320	1640	1960	2280	2600	2910	3000		



- NOTES**
- ACFT MAY BE RADAR VECTORED TO FINAL.
 - DME 41X(110.4) NOT TO BE USED WITH THIS PROCEDURE.
 - SPECIAL ALTN MNM 800/4KM.
 - NO CIRCLING IN SECTOR SW OF RWY 11/29 AND RWY 18/36 BEYOND 2.5NM.

CATEGORY	A	B	C	D
S-I VOR/DME	570 (489-1.9)			
CIRCLING *	700 (597-2.4)		800 (697-4.0)	1000 (897-5.0)
ALTERNATE ‡	(1097-4.4)		(1197-6.0)	(1397-7.0)

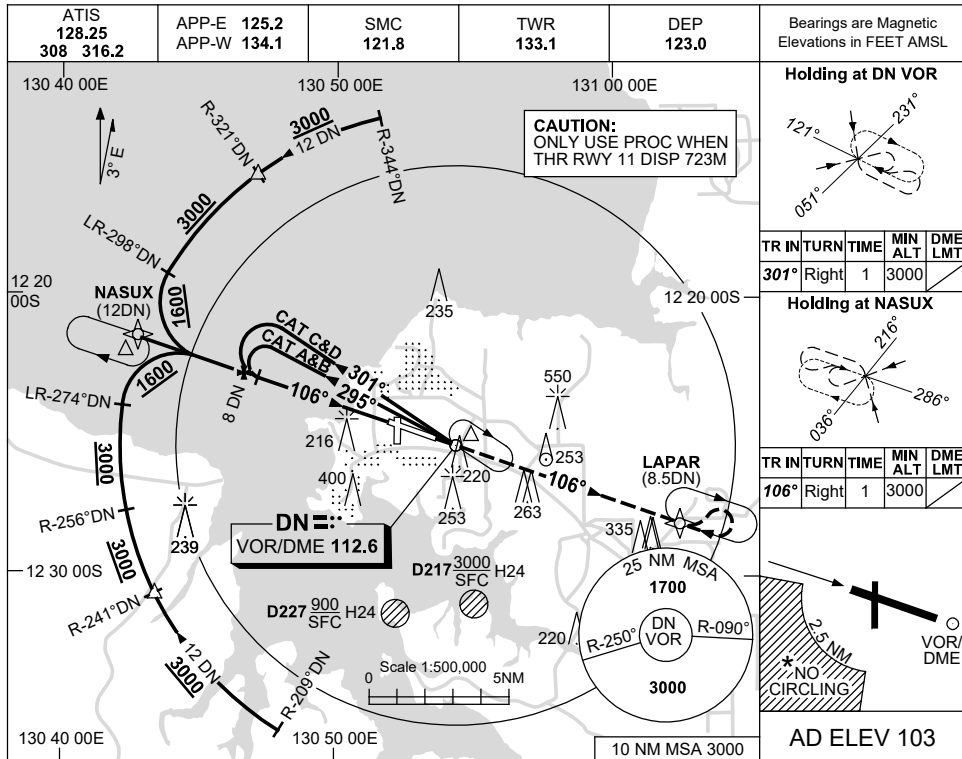
Changes: VIS MINIMA.

PDNV003-174

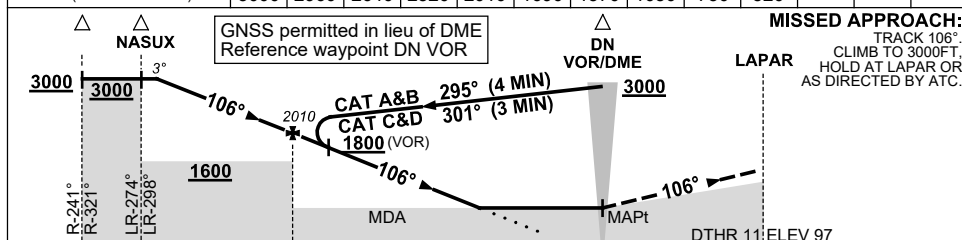
USE QNH

VOR-T RWY 11
DARWIN, NT (YPDN)

1 DEC 2022



DIST TO DN DME	11.1	11	10	9	8	7	6	5	4	3.3			
ALT (3° APCH PATH)	3000	2960	2640	2320	2010	1690	1370	1050	730	520			



NM TO 12 12 8 2.2 0 8.5
 DN DME

NOTES

1. MAX IAS: INITIAL : 210KT.
2. ACFT MAY BE RADAR VECTORED TO FINAL.
3. DME 41X(110.4) NOT TO BE USED WITH THIS PROCEDURE.
- *4. SPECIAL ALTN MNM 800/4 KM.
- *5. NO CIRCLING IN SECTOR SW OF RWY 11/29 AND RWY 18/36 BEYOND 2.5NM.

CATEGORY	A	B	C	D
S-I VOR		570 (467-2.6)		
S-I VOR/DME		520 (417-2.3)		
CIRCLING *	700 (597-2.4)	800 (697-4.0)	1000 (897-5.0)	
ALTERNATE *	(1097-4.4)	(1197-6.0)	(1397-7.0)	

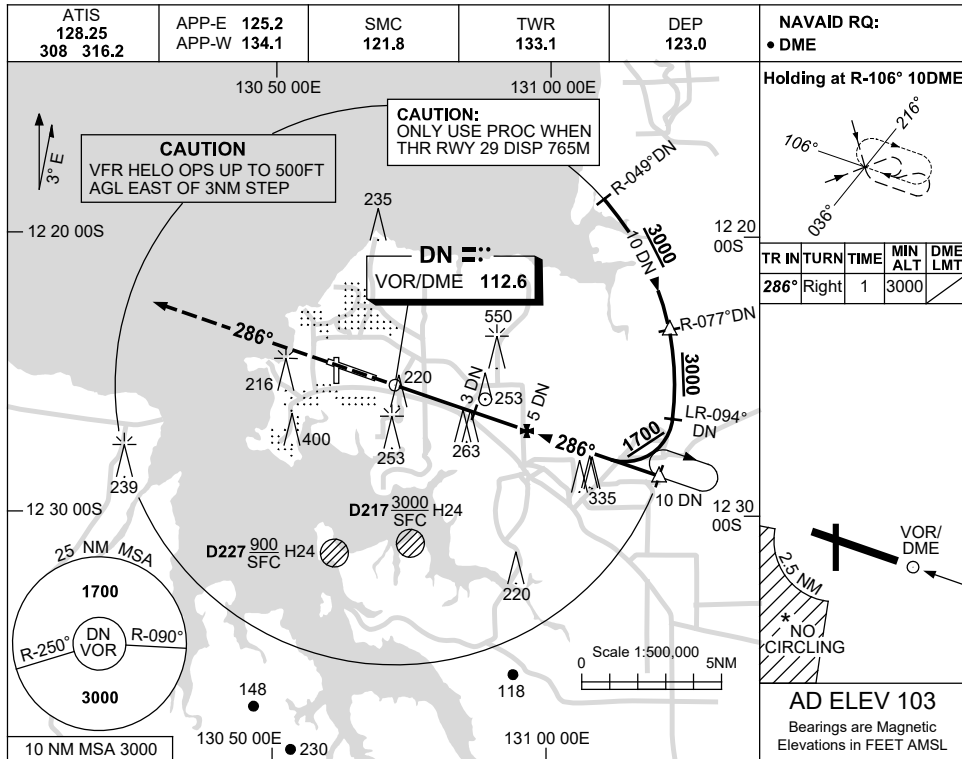
Changes: MAG VAR AND NOTE 3.

PDNV004-173

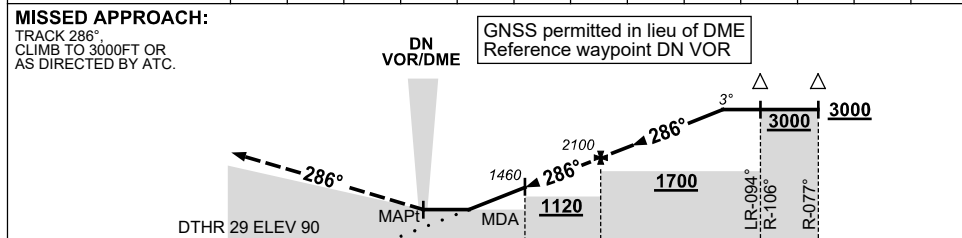
USE QNH

VOR-T RWY 29
DARWIN, NT (YPDN)

1 DEC 2022



DIST TO DN DME	0.2	1	2	3	4	5	6	7	7.8				
ALT (3° APCH PATH)	570	830	1140	1460	1780	2100	2420	2740	3000				



NM TO DN DME

CATEGORY	A	B	C	D
S-I VOR/DME	570 (480-2.7)			
CIRCLING *	700 (597-2.4)	800 (697-4.0)	1000 (897-5.0)	
ALTERNATE ‡	(1097-4.4)	(1197-6.0)	(1397-7.0)	

NOTES

- ACFT MAY BE RADAR VECTORED TO FINAL.
- DME 41X(110.4) NOT TO BE USED WITH THIS PROCEDURE.
- SPECIAL ALTN MNM 800/4KM.
- NO CIRCLING IN SECTOR SW OF RWY 11/29 AND RWY 18/36 BEYOND 2.5NM.

Changes: MAG VAR AND NOTE 2.

PDNV005-173