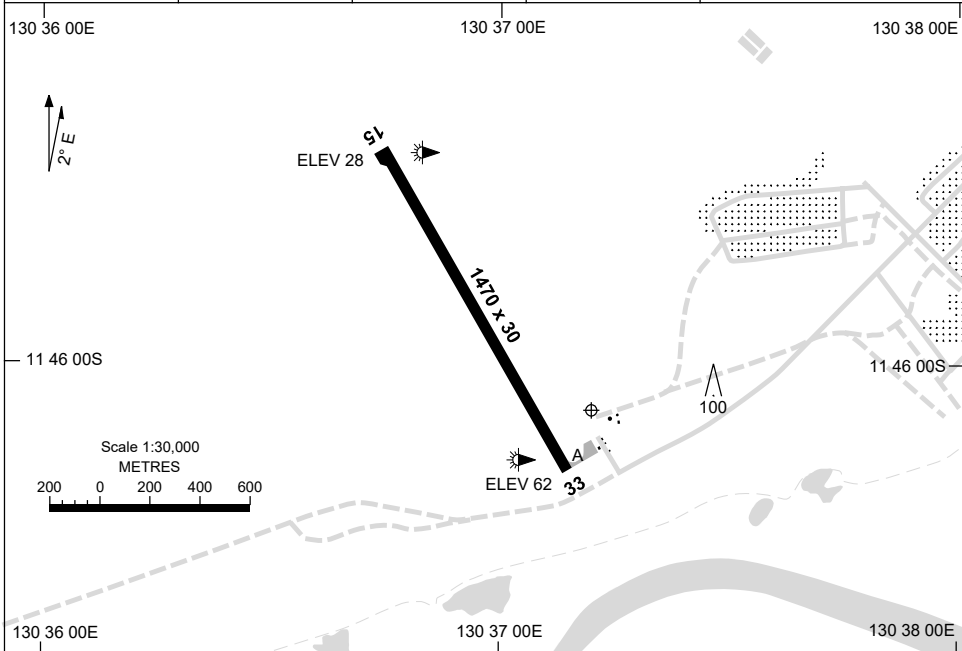


23 MAR 2023

AD ELEV 67  
11 46 09S 130 37 11E

AERODROME CHART  
**BATHURST ISLAND, NT (YBTI)**

FIA <b>BN CEN 118.15</b>	CTAF+AFRU <b>126.5</b>		Bearings are Magnetic Elevations in FEET AMSL
-----------------------------	---------------------------	--	--



	<b>AERODROME LIGHTING</b>	
<b>RWY</b>	RL : PTBL IN EMERG (PH) ARO 0407 979 325 : EMERG 0427 451 735	
<b>15</b> <sup>148</sup>	NIL	
<sup>328</sup> <b>33</b>	NIL	

**NOTES**

1. FIA FREQ 118.15 AVBL IN CIRCUIT AREA.

Changes: TWY A ADDED AND NOTE 1 DELETED.

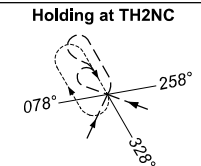
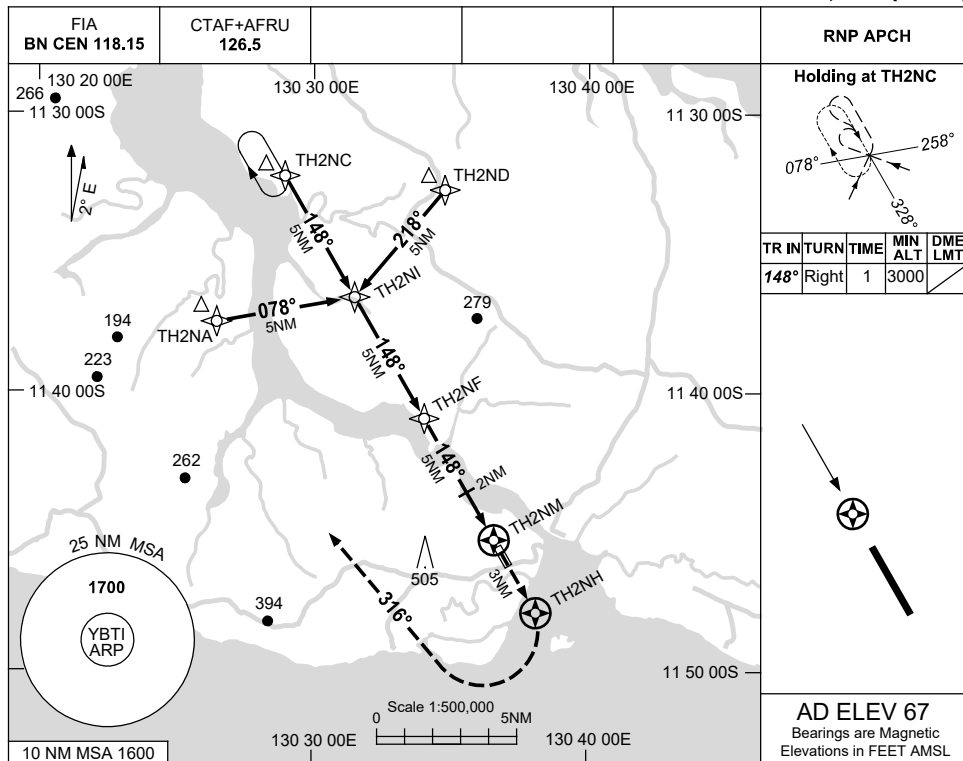
BTIAD01-174

USE QNH

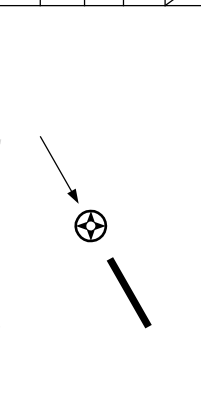
RNP RWY 15

8 SEP 2022

BATHURST ISLAND, NT (YBTI)

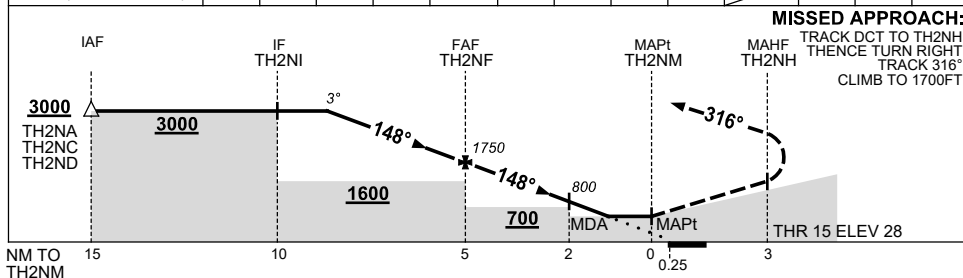


TR	IN	TURN	TIME	MIN ALT	DME LMT
148°	Right	1	3000		



**AD ELEV 67**  
 Bearings are Magnetic  
 Elevations in FEET AMSL

NM TO NEXT WPT	3.9	3	2	1	TH2NF	4	3	2	1.2	TH2NM			
ALT (3° APCH PATH)	3000	2710	2390	2070	1750	1430	1110	800	550				



**MISSED APPROACH:**  
 TRACK DCT TO TH2NH,  
 THENCE TURN RIGHT,  
 TRACK 316°,  
 CLIMB TO 1700FT.

**NOTES**

CATEGORY	A	B	C	D
LNAV	550 (522-3.0)			NOT APPLICABLE
CIRCLING	800 (733-2.4)		1000 (933-4.0)	
ALTERNATE	(1233-4.4)		(1433-6.0)	

- MAX IAS:  
INITIAL : 210KT.
- HOLDING AT TH2NC  
OVERLAYS YGPT  
RNP RWY 04.

Changes: CHART TITLE, PBN SPECIFICATION BOX, NOTE 2.

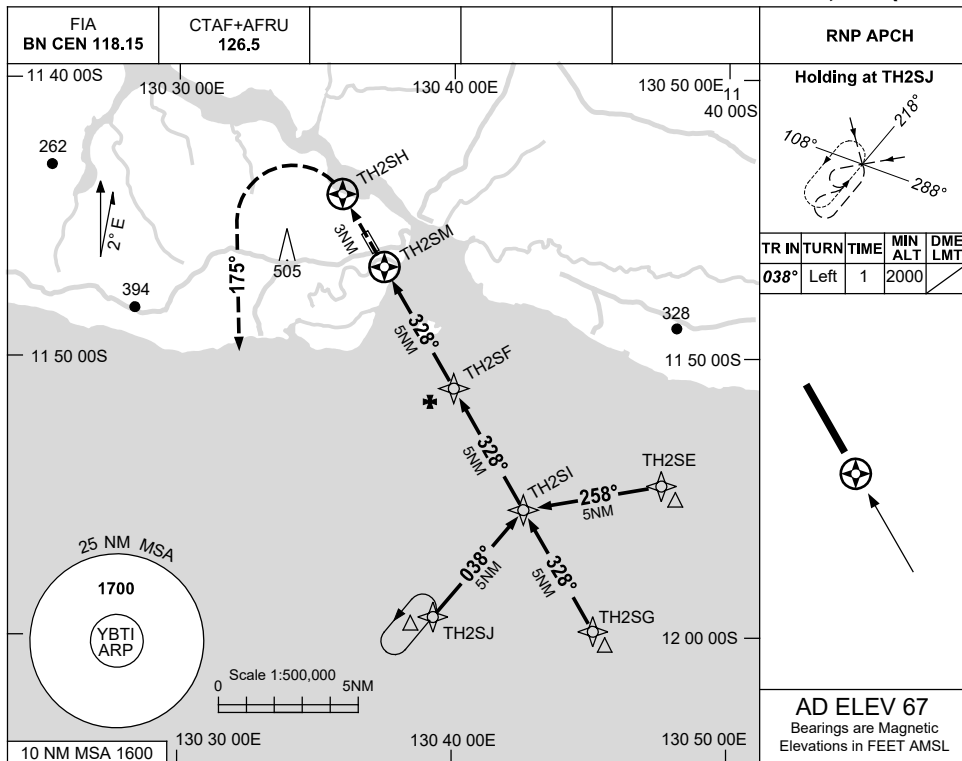
BTIGN01-172

USE QNH

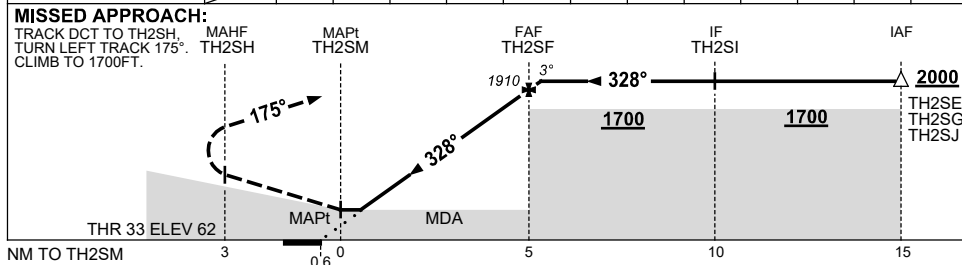
RNP RWY 33

8 SEP 2022

BATHURST ISLAND, NT (YBTI)



NM TO NEXT WPT	TH2SM	0.7	2	3	4	TH2SF	0.3						
ALT (3° APCH PATH)		550	950	1270	1590	1910	2000						



**NOTES**

CATEGORY	A	B	C	D
LNAV	<b>550</b> (483-2.7)			<b>NOT APPLICABLE</b>
CIRCLING	<b>800</b> (733-2.4)		<b>1000</b> (933-4.0)	
ALTERNATE	(1233-4.4)		(1433-6.0)	

1. MAX IAS:  
INITIAL : 210KT.

Changes: CHART TITLE, PBN SPECIFICATION BOX.

BTIGN02-172