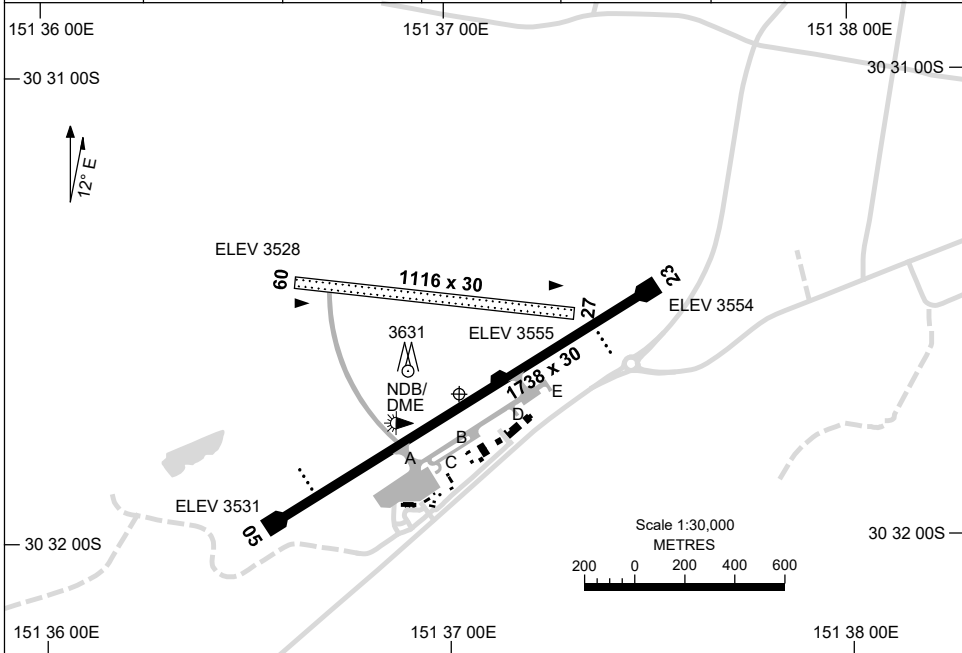


21 MAR 2024

AD ELEV 3556  
30 31 41S 151 37 02E

AERODROME CHART  
**ARMADALE, NSW (YARM)**

AWIS 134.75	FIA BN CEN 125.75	CTAF+AFRU 127.5	AFRU+PAL 127.5		Bearings are Magnetic Elevations in FEET AMSL
----------------	----------------------	--------------------	-------------------	--	--



RWY		AERODROME LIGHTING
		TAXIWAY : BLUE EDGE RL : AFRU+PAL 127.5 , SDBY (15 SEC)
<b>05</b> <sup>047</sup>		PAPI 3.0° 47FT MIRL RTIL
227 <b>23</b>		PAPI 3.0° 46FT MIRL RTIL
<b>09</b> <sup>085</sup>		NIL
265 <b>27</b>		NIL

**NOTES**

Changes: TWY, Editorial.

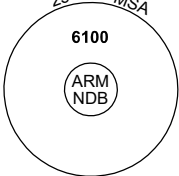
ARMAD01-178

## DME or GNSS ARRIVAL PROCEDURES ARMIDALE, NSW (YARM)

17 JUN 2021


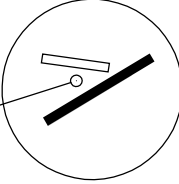
AWIS 134.75	FIA BN CEN 125.75	CTAF+AFRU 127.5	AFRU+PAL 127.5		Bearings are Magnetic Elevations in FEET AMSL
----------------	----------------------	--------------------	-------------------	--	--


25 NM MSA

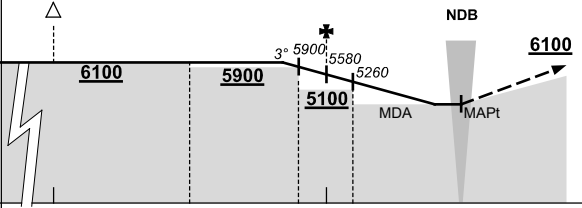


10 NM MSA 6000

**DME USING ARM DME  
REFERENCE WAYPOINT ARM NDB**



<b>ALL TRACKS TO ARM NDB</b>										<b>MISSED APPROACH:</b> CLIMB ON TRACK TO 6100FT.									
	NM TO ARM NDB    25    15                    10                    6    5    4                    0																		
<b>CIRCLING MINIMA</b>		A,B: 4340-2.4			C: 4440-4.0			D: N/A											
NM TO ARM NDB	6.6	6	5	4	3	2	1.4	1.1											
ALT (3° APCH PATH)	6100	5900	5580	5260	4940	4630	4440	4340											

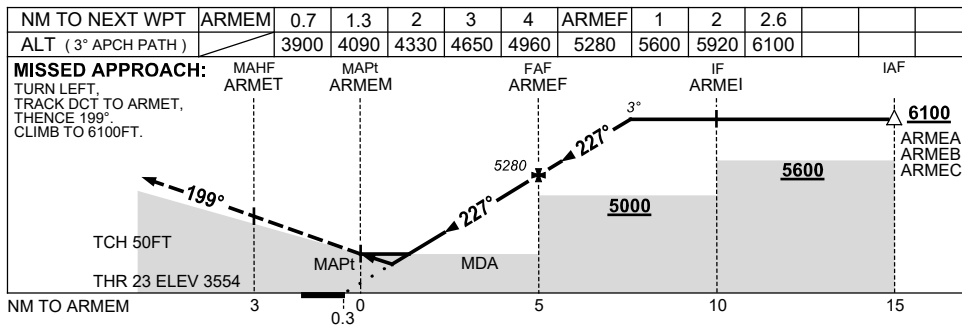
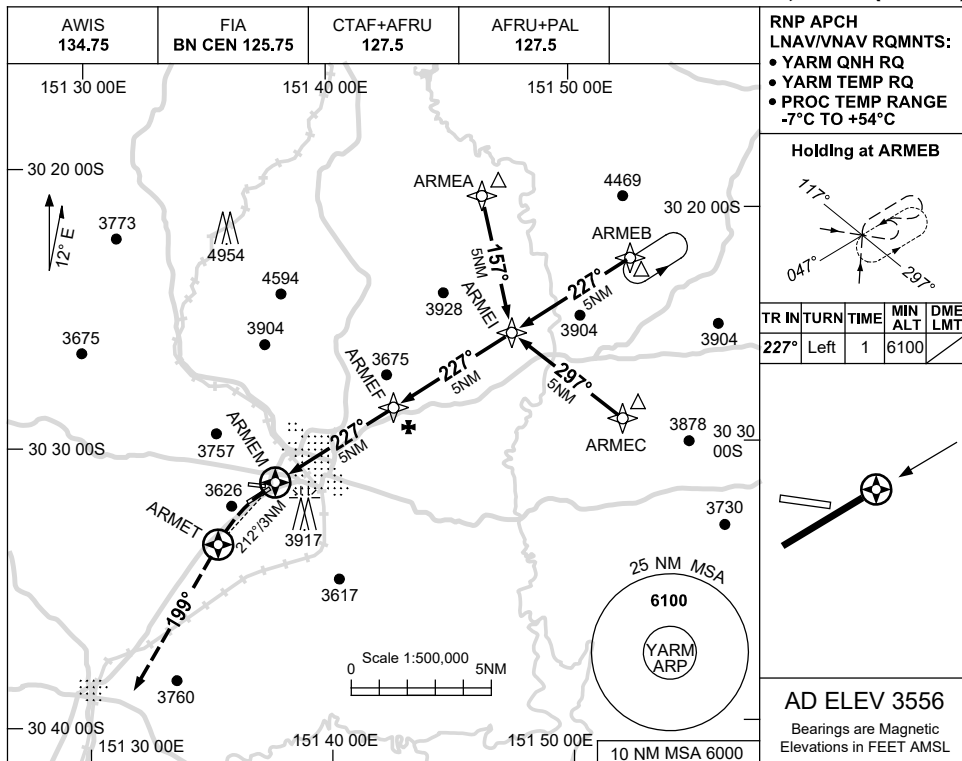


USE QNH

RNP RWY 23

24 MAR 2022

ARMIDALE, NSW (YARM)



**NOTES**

- MAX IAS: INITIAL : 210KT.

CATEGORY	A	B	C	D	
LNAV/VNAV	<b>3900</b> (346-1.9)			NOT APPLICABLE	
LNAV	<b>4090</b> (534-3.0)				
CIRCLING	<b>4340</b> (784-2.4)		<b>4440</b> (884-4.0)		
ALTERNATE	(1284-4.4)		(1384-6.0)		

Changes: ARMEB WPT IDENT CORRECTION IN PROFILE VIEW.

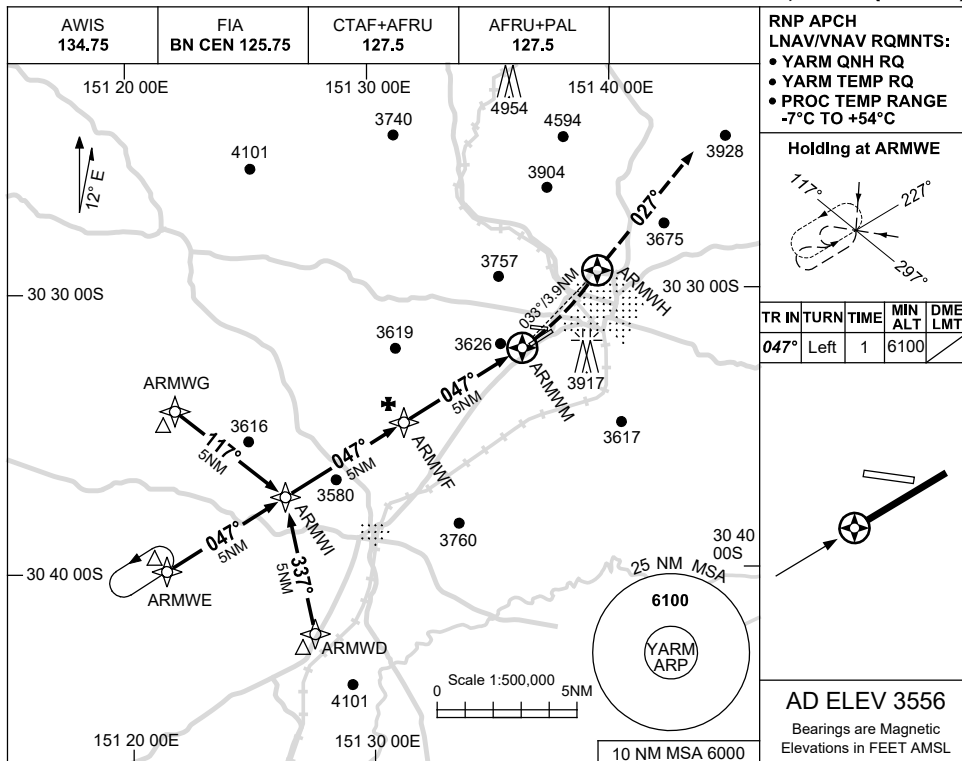
ARMGN01-170

USE QNH

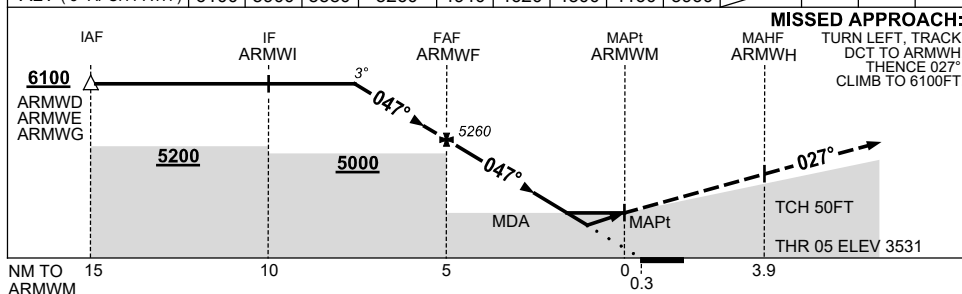
RNP RWY 05

2 DEC 2021

ARMIDALE, NSW (YARM)



NM TO NEXT WPT	2.6	2	1	ARMWF	4	3	2	1.6	0.9	ARMWM			
ALT (3° APCH PATH)	6100	5900	5580	5260	4940	4620	4300	4160	3960				



**NOTES**

1. MAX IAS:  
INITIAL : 210KT.

CATEGORY	A	B	C	D
LNAV/VNAV		3960 (429-2.4)		NOT APPLICABLE
LNAV		4160 (629-3.6)		
CIRCLING	4340 (784-2.4)		4440 (884-4.0)	
ALTERNATE	(1284-4.4)		(1384-6.0)	

Changes: CHART TITLE, PBN SPECIFICATION BOX.

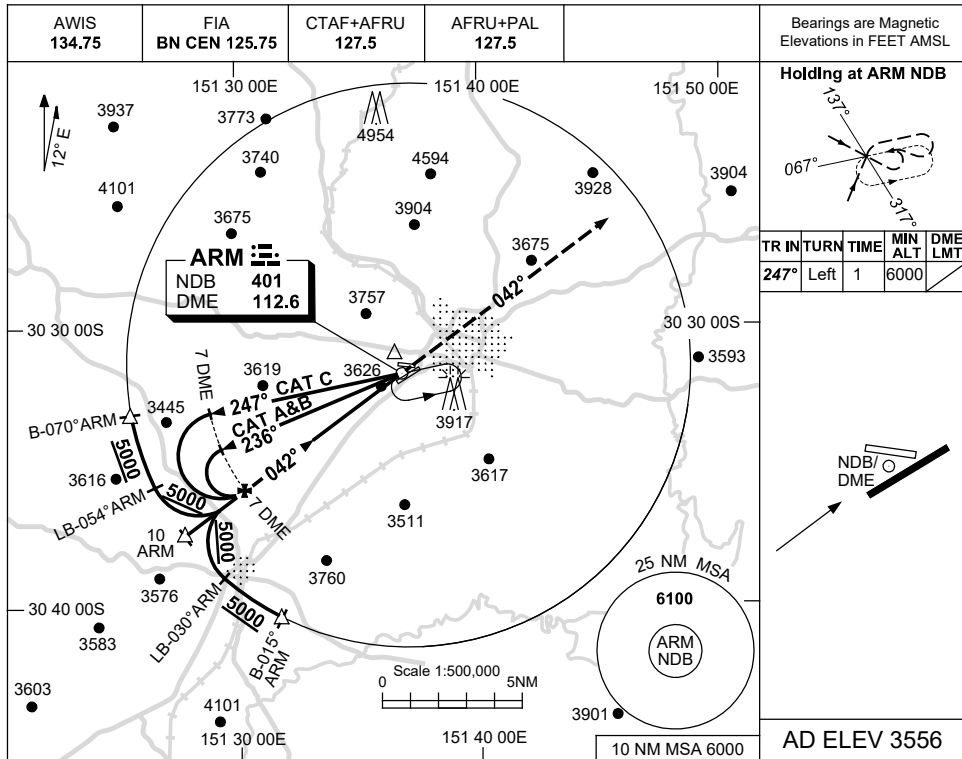
ARMGN02-169

USE QNH

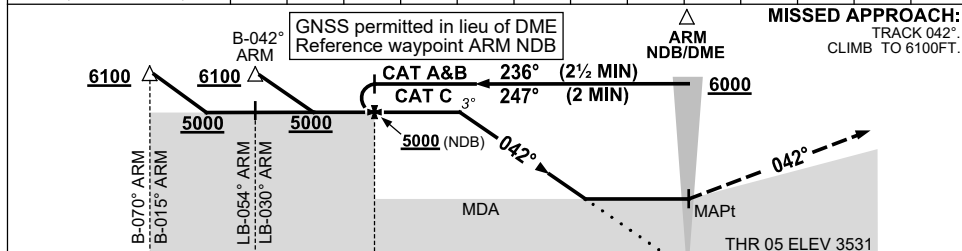
NDB RWY 05

ARMIDALE, NSW (YARM)

17 JUN 2021



DIST TO ARM DME	4.9	4	3	2.3													
ALT (3° APCH PATH)	5000	4710	4390	4160													



NM TO ARM DME

NOTES

CATEGORY	A	B	C	D
S-I NDB		4210 (679-3.9)		NOT APPLICABLE
S-I NDB/DME		4160 (629-3.6)		
CIRCLING	4340 (784-2.4)		4440 (884-4.0)	
ALTERNATE	(1284-4.4)		(1384-6.0)	

1. MAX IAS:  
INITIAL : 210KT.

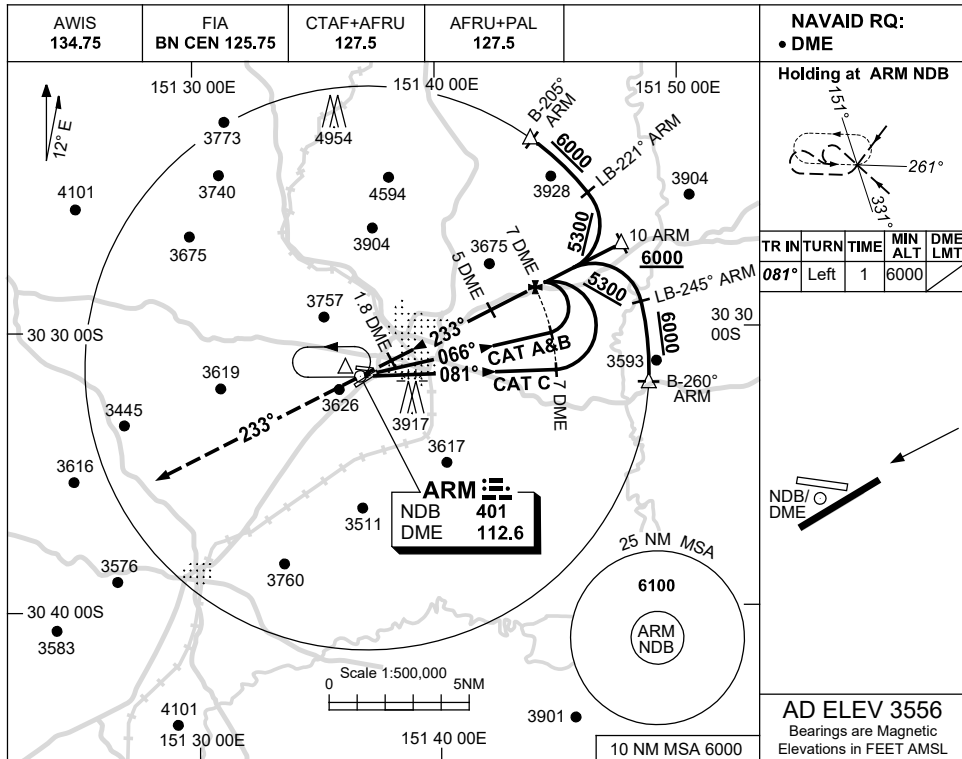
Changes: COORD FMT, Editorial.

ARMNB01-167

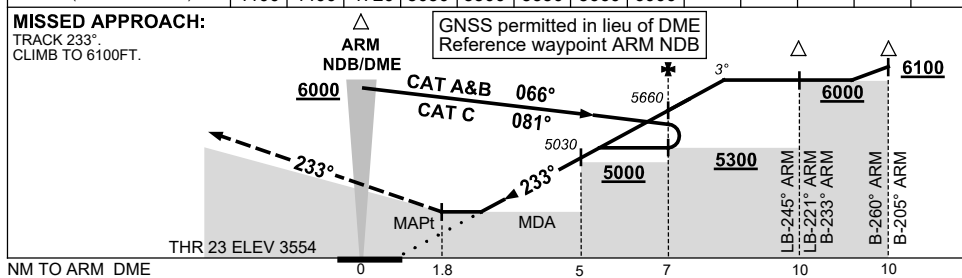
USE QNH

NDB RWY 23  
**ARMIDALE, NSW (YARM)**

17 JUN 2021



DIST TO ARM DME	2.1	3	4	5	5.8	6	7	8						
ALT (3° APCH PATH)	4100	4400	4720	5030	5300	5350	5660	6000						



**NOTES**

CATEGORY	A	B	C	D
S-I NDB/DME	4100 (544-3.1)			NOT APPLICABLE
CIRCLING	4340 (784-2.4)	4440 (884-4.0)		
ALTERNATE	(1284-4.4)		(1384-6.0)	

1. MAX IAS: INITIAL : 210KT.

Changes: COORD FMT, Editorial.

ARMNB02-167